



## UK Office

### Everest Biotech Ltd

Cherwell Innovation Centre  
77 Heyford Park  
Upper Heyford  
Oxfordshire  
OX25 5HD  
UK

Enquiries:

[info@everestbiotech.com](mailto:info@everestbiotech.com)

Sales:

[sales@everestbiotech.com](mailto:sales@everestbiotech.com)

Tech support:

[support@everestbiotech.com](mailto:support@everestbiotech.com)

Tel: +44 (0)1869 238326

Fax: +44 (0)1869 238327

## US Office

### Everest Biotech c/o Abcore

405 Maple Street, Suite A106  
Ramona,  
CA 92065  
USA

Inquiries:

[info@everestbiotech.com](mailto:info@everestbiotech.com)

Sales:

[usasales@everestbiotech.com](mailto:usasales@everestbiotech.com)

Tech support:

[support@everestbiotech.com](mailto:support@everestbiotech.com)

Tel: 888-320-4628 (toll-free)

Fax: 888-841-9041

[www.everestbiotech.com](http://www.everestbiotech.com)

**Research Use Only. Not for  
diagnostic or therapeutic use.**

## EB10810 - Goat Anti-ZIC2 Antibody

Size: 100µg specific antibody in 200µl



### Target Protein

**Principal Names:** ZIC2, Zic family member 2 (odd-paired homolog, Drosophila), HPE5, Zic family member 2 (odd-paired Drosophila homolog), Zinc finger protein of the cerebellum 2, zinc finger protein ZIC 2

**Official Symbol:** ZIC2

**Accession Number(s):** NP\_009060.2

**Human GeneID(s):** [7546](#)

**Non-Human GeneID(s):** 22772 (mouse), 361096 (rat)

**Important Comments:** This antibody is expected to NOT cross-react with other ZIC proteins.

### Immunogen

Peptide with sequence C-HSGLSSNFNEWY, from the C Terminus of the protein sequence according to NP\_009060.2.

Please note the [peptide](#) is available for sale.

### Purification and Storage

Purified from goat serum by ammonium sulphate precipitation followed by antigen affinity chromatography using the immunizing peptide.

Supplied at 0.5 mg/ml in Tris saline, 0.02% sodium azide, pH7.3 with 0.5% bovine serum albumin.

Aliquot and store at -20°C. Minimize freezing and thawing.

### Applications Tested

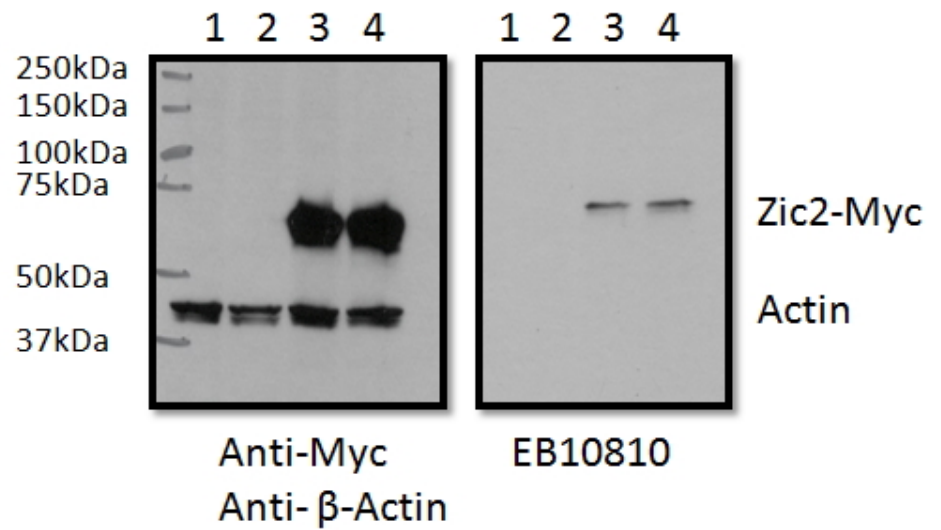
**Peptide ELISA:** antibody detection limit dilution 1:1000.

**Western blot:** In transfected RWPE1 transiently expressing Human ZIC2-Myc a band of approx. 65kDa is observed. This band is not observed in the non-transfected RWPE1, nor when GFP is transiently expressed (calculated Mwt. of 55.0kDa according to NP\_009060.2 and 58.6kDa for the ZIC2-Myc protein). Recommended concentration, 0.5-2µg/ml. Primary incubation overnight at 4°C. Data kindly provided by Nathan Bowen and Maryam Boseman, Clark Atlanta University, GA, USA..

### Species Reactivity

**Tested:** Human

**Expected from sequence similarity:** Human, Mouse, Rat, Dog, Cow



EB10810 RWPE1 lysate (60ug protein in RIPA buffer) overexpressing Human ZIC2 with C-terminal MYC tag probed with EB10810 (0.5ug/ml) in the right panel and probed with anti-MYC Tag (1/1000) and anti-beta-Actin in the left panel. Mock-transfected RWPE1 in lanes 1 and expressing GFP in lanes 2. Detected by chemiluminescence.