



UK Office

Everest Biotech Ltd

Cherwell Innovation Centre
77 Heyford Park
Upper Heyford
Oxfordshire
OX25 5HD
UK

Enquiries:

info@everestbiotech.com

Sales:

sales@everestbiotech.com

Tech support:

support@everestbiotech.com

Tel: +44 (0)1869 238326

Fax: +44 (0)1869 238327

US Office

Everest Biotech c/o Abcore

405 Maple Street, Suite A106
Ramona,
CA 92065
USA

Inquiries:

info@everestbiotech.com

Sales:

usasales@everestbiotech.com

Tech support:

support@everestbiotech.com

Tel: 888-320-4628 (toll-free)

Fax: 888-841-9041

www.everestbiotech.com

**Research Use Only. Not for
diagnostic or therapeutic use.**

EB10813 - Goat Anti-ZEB2 (aa545-558) Antibody

Size: 100µg specific antibody in 200µl



Target Protein

Principal Names: ZEB2, zinc finger E-box binding homeobox 2, FLJ42816, KIAA0569, SIP-1, SIP1, SMADIP1, ZFH1B, OTTHUMP00000204540, Smad-interacting protein 1, zinc finger E-box-binding homeobox 2, zinc finger homeobox 1b, zinc finger homeobox protein 1

Official Symbol: ZEB2

Accession Number(s): NP_055610.1; NP_001165124.1

Human GeneID(s): [9839](#)

Non-Human GeneID(s): 24136 (mouse), 311071 (rat)

Important Comments: This antibody is expected to recognize both reported isoforms (NP_055610.1; NP_001165124.1).

Immunogen

Peptide with sequence C-TDSRRQISNIKKEK, from the internal region of the protein sequence according to NP_055610.1; NP_001165124.1.

Please note the [peptide](#) is available for sale.

Purification and Storage

Purified from goat serum by ammonium sulphate precipitation followed by antigen affinity chromatography using the immunizing peptide.

Supplied at 0.5 mg/ml in Tris saline, 0.02% sodium azide, pH7.3 with 0.5% bovine serum albumin.

Aliquot and store at -20°C. Minimize freezing and thawing.

Applications Tested

Peptide ELISA: antibody detection limit dilution 1:32000.

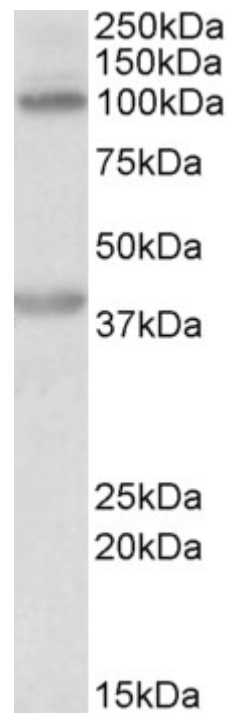
Western blot: Approx 100+38kDa bands observed in Human Liver lysates (calculated MW of 136kDa according to NP_055610.1). Recommended concentration: 0.2-0.5µg/ml. Primary incubation was 1 hour. We believe the two observed bands represent two breakdown fragments.

IHC: Paraffin embedded Human Kidney. Recommended concentration: 5µg/ml.

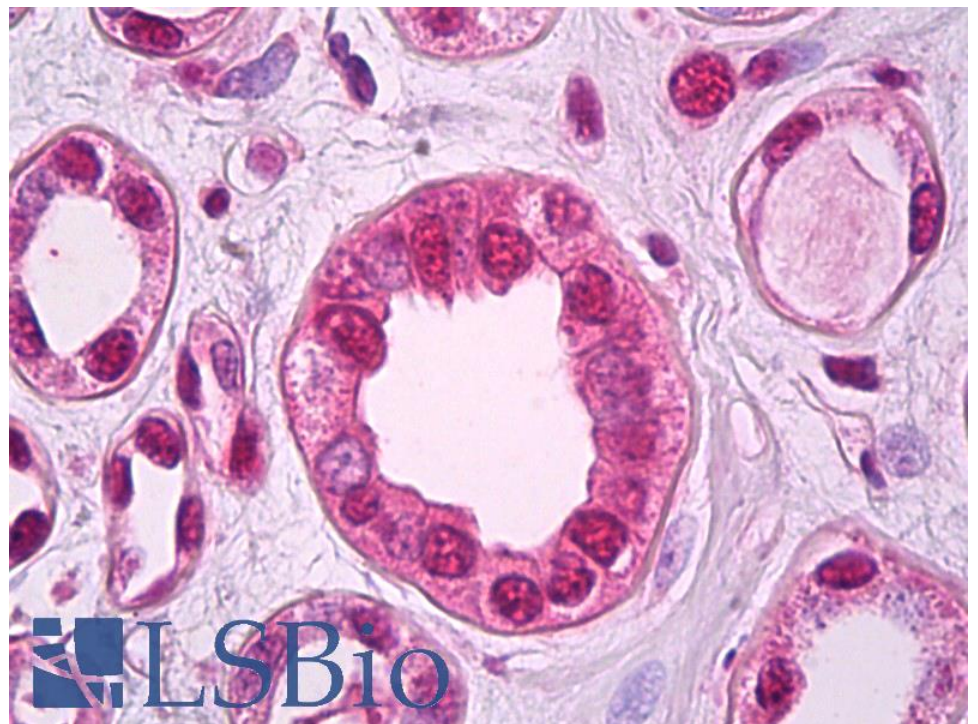
Species Reactivity

Tested: Human

Expected from sequence similarity: Human, Mouse, Rat, Dog



EB10813 (0.2 μ g/ml) staining of Human Liver lysate (35 μ g protein in RIPA buffer). Detected by chemiluminescence.



EB10813 (5 μ g/ml) staining of paraffin embedded Human Kidney. Steamed antigen retrieval with citrate buffer pH 6, AP-staining.