



UK Office

Everest Biotech Ltd

Cherwell Innovation Centre
77 Heyford Park
Upper Heyford
Oxfordshire
OX25 5HD
UK

Enquiries:

info@everestbiotech.com

Sales:

sales@everestbiotech.com

Tech support:

support@everestbiotech.com

Tel: +44 (0)1869 238326

Fax: +44 (0)1869 238327

US Office

Everest Biotech c/o Abcore

405 Maple Street, Suite A106
Ramona,
CA 92065
USA

Inquiries:

info@everestbiotech.com

Sales:

usasales@everestbiotech.com

Tech support:

support@everestbiotech.com

Tel: 888-320-4628 (toll-free)

Fax: 888-841-9041

www.everestbiotech.com

**Research Use Only. Not for
diagnostic or therapeutic use.**

EB07332 - Goat Anti-Wilms tumor 1 / WT1 Antibody

Size: 100µg specific antibody in 200µl



Target Protein

Principal Names: WT1, Wilms tumor 1, GUD, WAGR, WIT-2, WT33

Official Symbol: WT1

Accession Number(s): NP_000369.3; NP_077742.2; NP_077743.2; NP_077744.3

Human GeneID(s): [7490](#)

Important Comments: This antibody is expected to recognise all four reported isoforms (NP_000369.3, NP_077742.2, NP_077743.2, NP_077744.3).

Immunogen

Peptide with sequence QDPASTCVPEPASQH, from the N Terminus of the protein sequence according to NP_000369.3; NP_077742.2; NP_077743.2; NP_077744.3.

Please note the [peptide](#) is available for sale.

Purification and Storage

Purified from goat serum by ammonium sulphate precipitation followed by antigen affinity chromatography using the immunizing peptide.

Supplied at 0.5 mg/ml in Tris saline, 0.02% sodium azide, pH7.3 with 0.5% bovine serum albumin.

Aliquot and store at -20°C. Minimize freezing and thawing.

Applications Tested

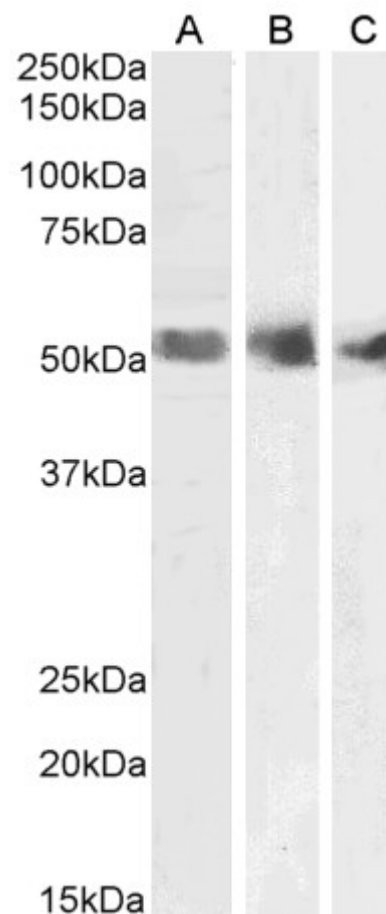
Peptide ELISA: antibody detection limit dilution 1:32000.

Western blot: Approx 55kDa band observed in Human Kidney, Spleen and Testis lysates (calculated MW of 54.3kDa according to NP_000369.3). Recommended concentration: 1-3µg/ml.

Species Reactivity

Tested: Human

Expected from sequence similarity: Human



EB07332 (1 μ g/ml) staining of Human Spleen (A), Kidney (B) and Testis (C) lysates (35 μ g protein in RIPA buffer). Primary incubation was 1 hour. Detected by chemiluminescence.