



## UK Office

### Everest Biotech Ltd

Cherwell Innovation Centre  
77 Heyford Park  
Upper Heyford  
Oxfordshire  
OX25 5HD  
UK

Enquiries:

[info@everestbiotech.com](mailto:info@everestbiotech.com)

Sales:

[sales@everestbiotech.com](mailto:sales@everestbiotech.com)

Tech support:

[support@everestbiotech.com](mailto:support@everestbiotech.com)

Tel: +44 (0)1869 238326

Fax: +44 (0)1869 238327

## US Office

### Everest Biotech c/o Abcore

405 Maple Street, Suite A106  
Ramona,  
CA 92065  
USA

Inquiries:

[info@everestbiotech.com](mailto:info@everestbiotech.com)

Sales:

[usasales@everestbiotech.com](mailto:usasales@everestbiotech.com)

Tech support:

[support@everestbiotech.com](mailto:support@everestbiotech.com)

Tel: 888-320-4628 (toll-free)

Fax: 888-841-9041

[www.everestbiotech.com](http://www.everestbiotech.com)

**Research Use Only. Not for  
diagnostic or therapeutic use.**

## EB07387 - Goat Anti-TSPO / PBR (isoform) Antibody

Size: 100µg specific antibody in 200µl



### Target Protein

**Principal Names:** TSPO, PBR, translocator protein (18kDa), BZRP, DBI, IBP, MBR, PKBS, PTBR, mDRC, pk18, OTTHUMP00000028891, benzodiazepine receptor (peripheral), benzodiazepine peripheral binding site, mitochondrial benzodiazepine receptor, peripheral benzodiazepine receptor, peripheral-type benzodiazepine receptor

**Official Symbol:** TSPO

**Accession Number(s):** NP\_000705.2

**Human GeneID(s):** [706](#)

**Important Comments:** This antibody is expected to recognise one isoform (NP\_000705.2) only.

### Immunogen

Peptide with sequence C-RDNHGWRGGRRLPE, from the C Terminus of the protein sequence according to NP\_000705.2.

Please note the [peptide](#) is available for sale.

### Purification and Storage

Purified from goat serum by ammonium sulphate precipitation followed by antigen affinity chromatography using the immunizing peptide.

Supplied at 0.5 mg/ml in Tris saline, 0.02% sodium azide, pH7.3 with 0.5% bovine serum albumin.

Aliquot and store at -20°C. Minimize freezing and thawing.

### Applications Tested

**Peptide ELISA:** antibody detection limit dilution 1:128000.

**Western blot:** Approx 17kDa band observed in Human Breast cancer lysates and approx 16kDa in Human Ovary and Skin lysates, and in lysates of cell line A431 (calculated MW of 18.8kDa according to NP\_000705.2). These molecular weights are routinely observed by other sources. Recommended concentration: 0.1-0.3µg/ml. Primary incubation 1 hour at room temperature.

**IHC:** In paraffin embedded Human Colon shows strong cytoplasm staining of absorptive cells. Recommended concentration: 2-4µg/ml. Paraffin embedded Human Kidney.

Recommended concentration: 5µg/ml.

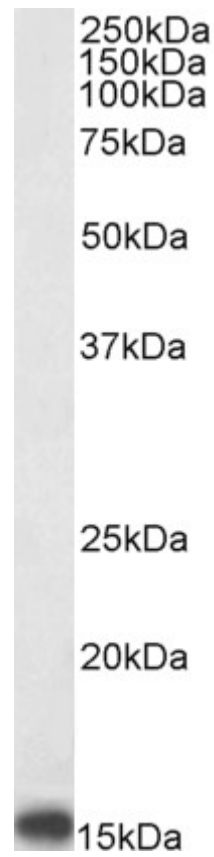
**Immunofluorescence:** Strong expression of the protein seen in the cytoplasm of HeLa and MCF7 cells. Recommended concentration: 10µg/ml.

**Flow Cytometry:** Flow cytometric analysis of HepG2 cells. Recommended concentration: 10µg/ml.

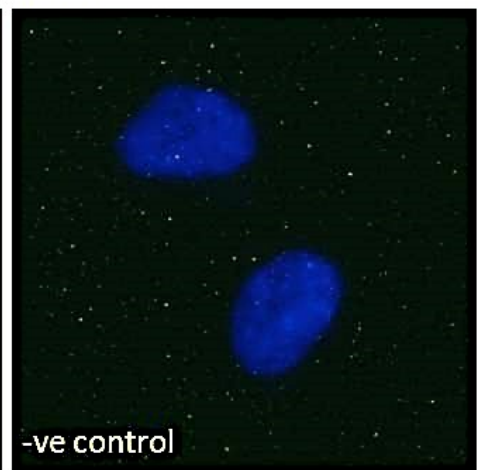
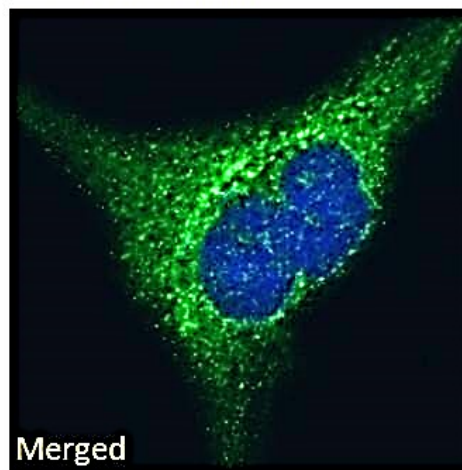
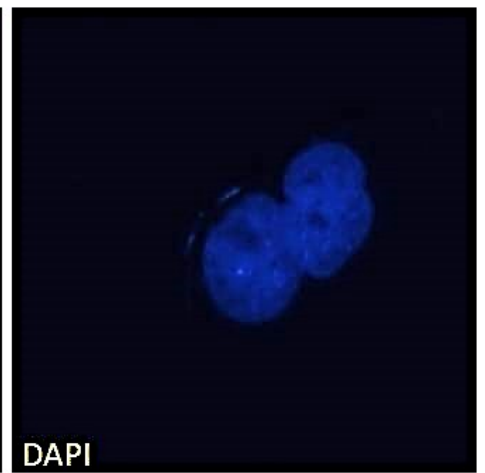
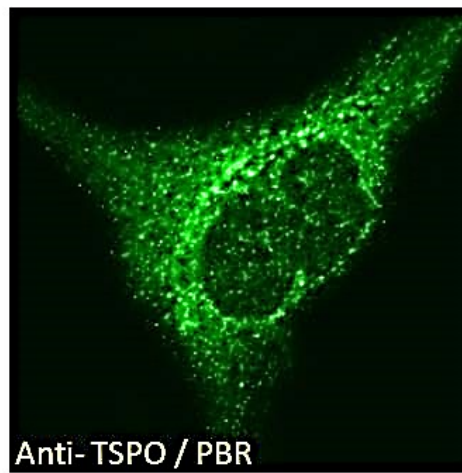
### Species Reactivity

**Tested:** Human

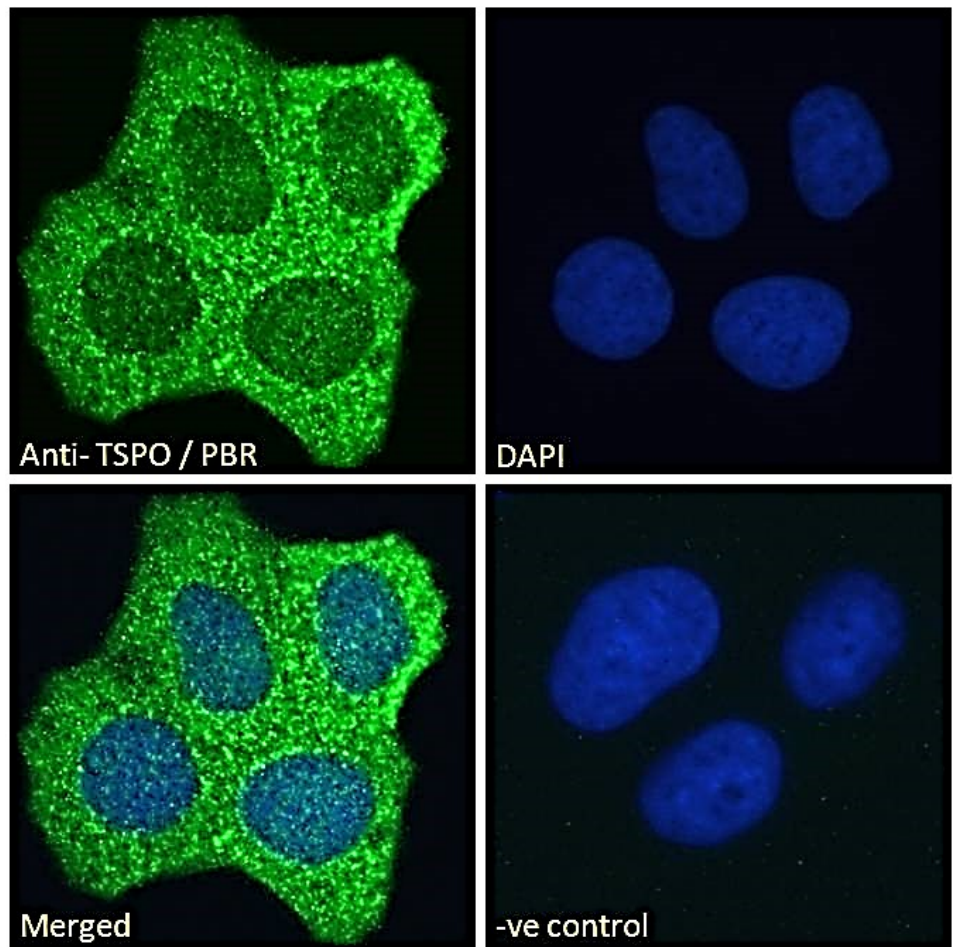
**Expected from sequence similarity:** Human



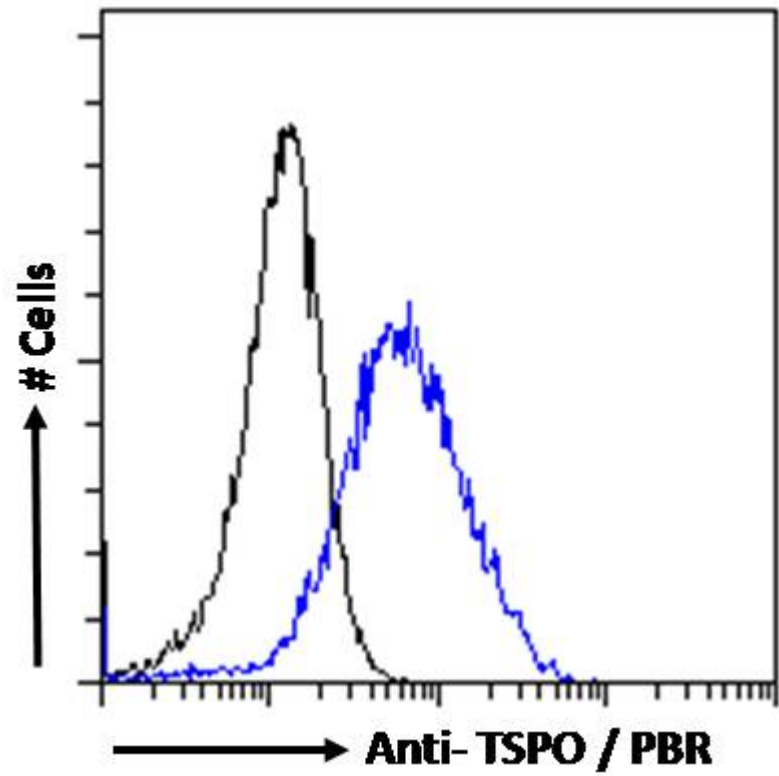
EB07387 (0.3 $\mu$ g/ml) staining of A431 cell lysate.(35 $\mu$ g protein in RIPA buffer). Detected by chemiluminescence.



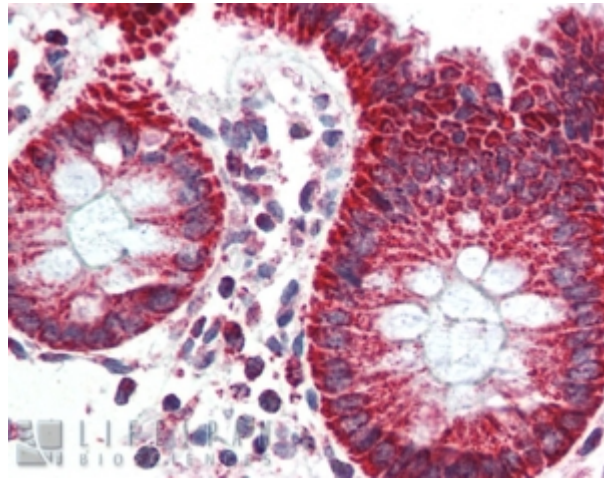
EB07387 Immunofluorescence analysis of paraformaldehyde fixed HeLa cells, permeabilized with 0.15% Triton. Primary incubation 1hr (10ug/ml) followed by Alexa Fluor 488 secondary antibody (2ug/ml), showing cytoplasmic staining. The nuclear stain is DAPI (blue). Negative control: Unimmunized goat IgG (10ug/ml) followed by Alexa Fluor 488 secondary antibody (2ug/ml).



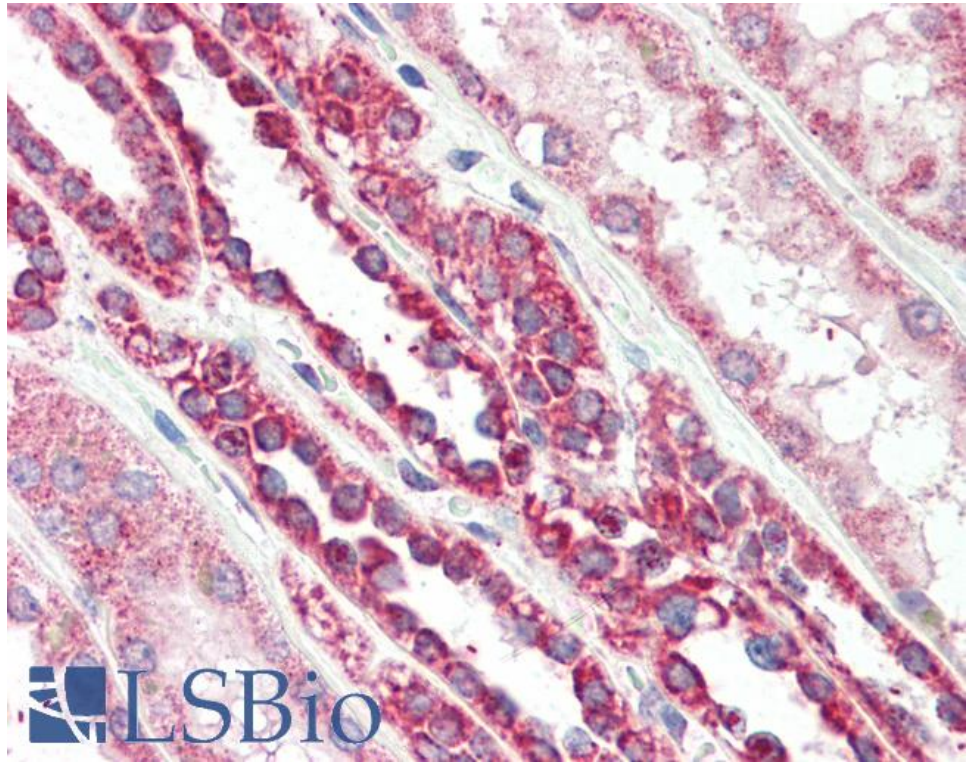
EB07387 Immunofluorescence analysis of paraformaldehyde fixed MCF7 cells, permeabilized with 0.15% Triton. Primary incubation 1hr (10ug/ml) followed by Alexa Fluor 488 secondary antibody (2ug/ml), showing cytoplasmic staining. The nuclear stain is DAPI (blue). Negative control: Unimmunized goat IgG (10ug/ml) followed by Alexa Fluor 488 secondary antibody (2ug/ml).



EB07387 Flow cytometric analysis of paraformaldehyde fixed MCF7 cells (blue line), permeabilized with 0.5% Triton. Primary incubation 1hr (10ug/ml) followed by Alexa Fluor 488 secondary antibody (1ug/ml). IgG control: Unimmunized goat IgG (black line) followed by Alexa Fluor 488 secondary antibody.



EB07387 (2.5µg/ml) staining of paraffin embedded Human Colon. Steamed antigen retrieval with citrate buffer pH 6, AP-staining.



EB07387 (5µg/ml) staining of paraffin embedded Human Kidney. Steamed antigen retrieval with citrate buffer pH 6, AP-staining.