



UK Office

Everest Biotech Ltd

Cherwell Innovation Centre
77 Heyford Park
Upper Heyford
Oxfordshire
OX25 5HD
UK

Enquiries:

info@everestbiotech.com

Sales:

sales@everestbiotech.com

Tech support:

support@everestbiotech.com

Tel: +44 (0)1869 238326

Fax: +44 (0)1869 238327

US Office

Everest Biotech c/o Abcore

405 Maple Street, Suite A106
Ramona,
CA 92065
USA

Inquiries:

info@everestbiotech.com

Sales:

usasales@everestbiotech.com

Tech support:

support@everestbiotech.com

Tel: 888-320-4628 (toll-free)

Fax: 888-841-9041

www.everestbiotech.com

**Research Use Only. Not for
diagnostic or therapeutic use.**

EB05510 - Goat Anti-Thioredoxin Reductase 1 Antibody

Size: 100µg specific antibody in 200µl



Target Protein

Principal Names: TXNRD1, thioredoxin reductase 1, TR1, TXNR, GRIM-12, MGC9145, TR, TRXR1, KM-102-derived reductase-like factor, oxidoreductase, thioredoxin reductase GRIM-12

Official Symbol: TXNRD1

Accession Number(s): NP_003321.2; NP_877393.1; NP_877419.1; NP_877420.1; NP_001087240.1

Human GeneID(s): [7296](#)

Important Comments: This antibody is expected to recognise reported isoform 1 (NP_003321.2), isoform 2 (NP_877393.1; NP_877419.1; NP_877420.1) and isoform 3 (NP_001087240.1)

Immunogen

Peptide with sequence TKRSGASILQAGC, from the C Terminus of the protein sequence according to NP_003321.2; NP_877393.1; NP_877419.1; NP_877420.1; NP_001087240.1.

Please note the [peptide](#) is available for sale.

Purification and Storage

Purified from goat serum by ammonium sulphate precipitation followed by antigen affinity chromatography using the immunizing peptide.

Supplied at 0.5 mg/ml in Tris saline, 0.02% sodium azide, pH7.3 with 0.5% bovine serum albumin.

Aliquot and store at -20°C. Minimize freezing and thawing.

Applications Tested

Peptide ELISA: antibody detection limit dilution 1:32000.

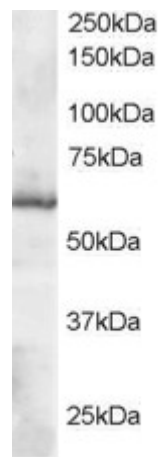
Western blot: Approx 60kDa band observed in Human Placenta lysates (predicted MW of 57kDa according to NP_003321). Recommended for use at 0.1-1µg/ml.

IHC: Paraffin embedded Human Testis and Spleen. Recommended concentration: 2.5µg/ml.

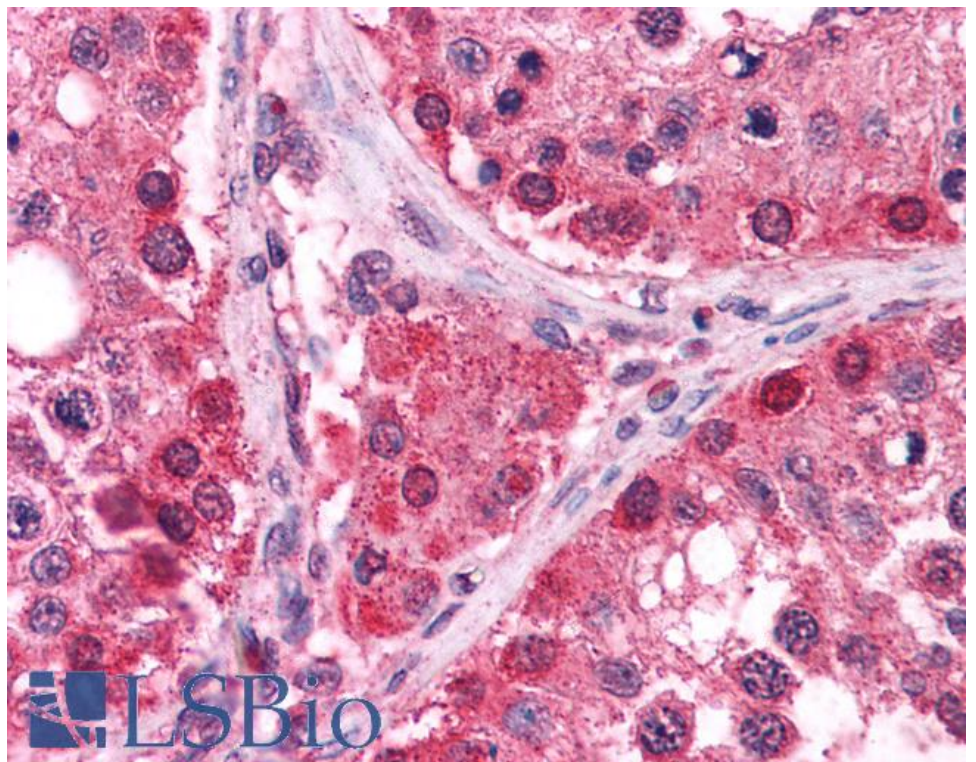
Species Reactivity

Tested: Human

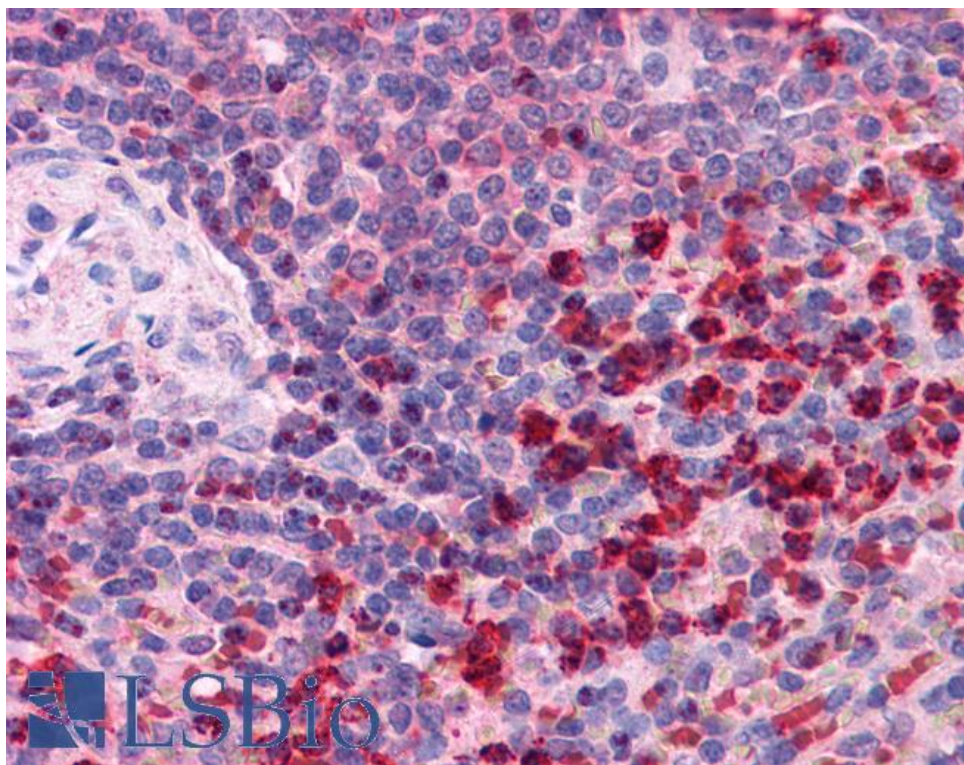
Expected from sequence similarity: Human



EB05510 staining (0.1 μ g/ml) of Human Placenta lysate (RIPA buffer, 35 μ g total protein per lane). Primary incubated for 1 hour. Detected by chemiluminescence.



EB05510 (2.5 μ g/ml) staining of paraffin embedded Human Testis. Steamed antigen retrieval with citrate buffer pH 6, AP-staining.



EB05510 (2.5µg/ml) staining of paraffin embedded Human Spleen. Steamed antigen retrieval with citrate buffer pH 6, AP-staining.