



UK Office

Everest Biotech Ltd

Cherwell Innovation Centre
77 Heyford Park
Upper Heyford
Oxfordshire
OX25 5HD
UK

Enquiries:

info@everestbiotech.com

Sales:

sales@everestbiotech.com

Tech support:

support@everestbiotech.com

Tel: +44 (0)1869 238326

Fax: +44 (0)1869 238327

US Office

Everest Biotech c/o Abcore

405 Maple Street, Suite A106
Ramona,
CA 92065
USA

Inquiries:

info@everestbiotech.com

Sales:

usasales@everestbiotech.com

Tech support:

support@everestbiotech.com

Tel: 888-320-4628 (toll-free)

Fax: 888-841-9041

www.everestbiotech.com

**Research Use Only. Not for
diagnostic or therapeutic use.**

EB09416 - Goat Anti-STK39 / SPAK Antibody

Size: 100µg specific antibody in 200µl



Target Protein

Principal Names: STK39, serine threonine kinase 39 (STE20/SPS1 homolog, yeast), DCHT, DKFZp686K05124, PASK, SPAK, Ste20-like protein kinase, proline-alanine-rich STE20-related kinase, small intestine SPAK-like kinase

Official Symbol: STK39

Accession Number(s): NP_037365.2

Human GeneID(s): [27347](#)

Non-Human GeneID(s): 53416 (mouse), 54348 (rat)

Immunogen

Peptide with sequence C-SQEKSRRVKEENPE, from the internal region of the protein sequence according to NP_037365.2.

Please note the [peptide](#) is available for sale.

Purification and Storage

Purified from goat serum by ammonium sulphate precipitation followed by antigen affinity chromatography using the immunizing peptide.

Supplied at 0.5 mg/ml in Tris saline, 0.02% sodium azide, pH7.3 with 0.5% bovine serum albumin.

Aliquot and store at -20°C. Minimize freezing and thawing.

Applications Tested

Peptide ELISA: antibody detection limit dilution 1:4000.

Western blot: Approx 65kDa band observed in Human Brain (Cerebellum) lysate (calculated MW of 59.5kDa according to NP_037365.2). The observed molecular weight corresponds to earlier findings with different antibodies from other commercial sources. Recommended concentration: 0.3-1µg/ml.

IHC: Paraffin embedded Human Testis. Recommended concentration: 6µg/ml.

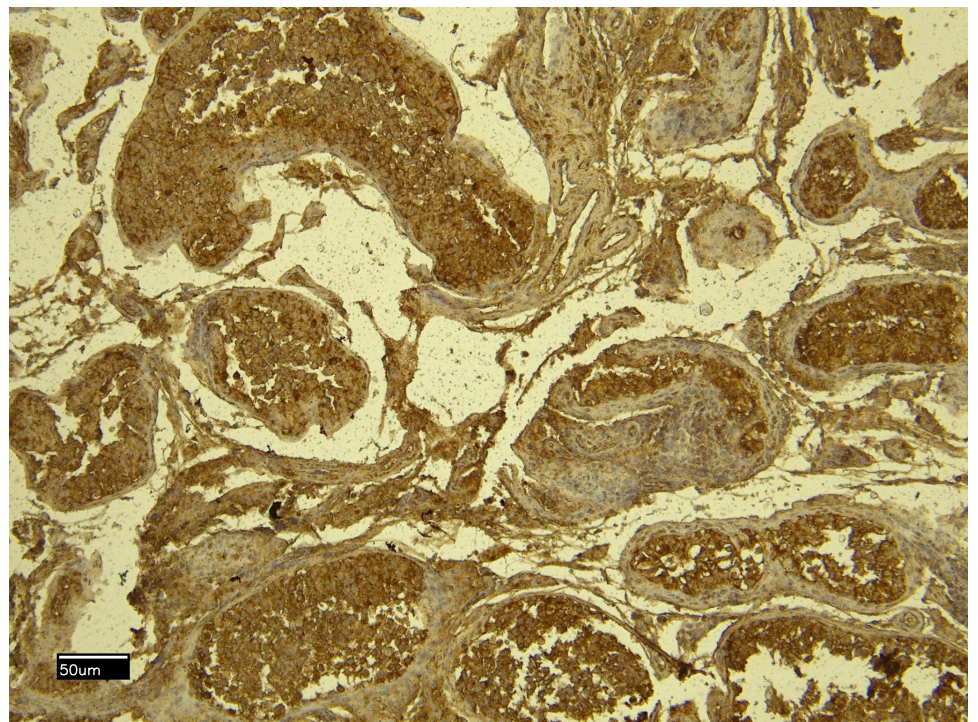
Species Reactivity

Tested: Human

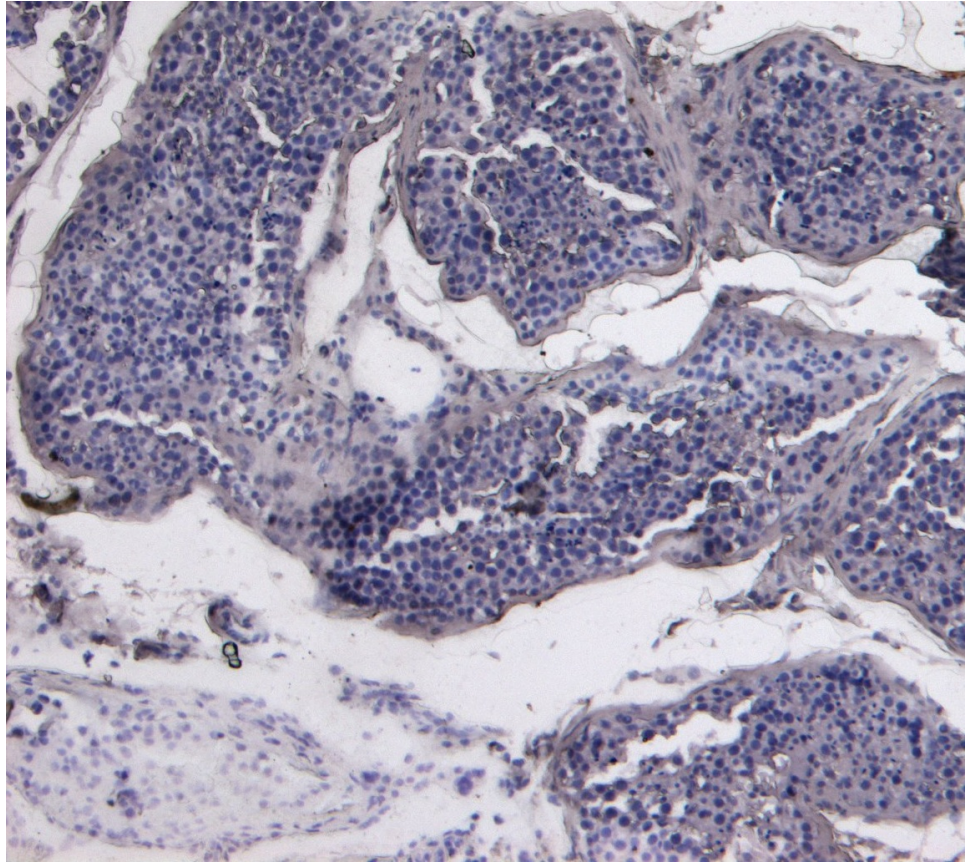
Expected from sequence similarity: Human, Mouse, Rat, Dog



EB09416 (0.3 μ g/ml) staining of Human Cerebellum lysate (35 μ g protein in RIPA buffer). Primary incubation was 1 hour. Detected by chemiluminescence.



EB09416 (6 μ g/ml) staining of paraffin embedded Human Testis. Heat induced antigen retrieval with citrate buffer pH 6, HRP-staining.



EB09416 Negative Control showing staining of paraffin embedded Human Testis, with no primary antibody.