



UK Office

Everest Biotech Ltd

Cherwell Innovation Centre
77 Heyford Park
Upper Heyford
Oxfordshire
OX25 5HD
UK

Enquiries:

info@everestbiotech.com

Sales:

sales@everestbiotech.com

Tech support:

support@everestbiotech.com

Tel: +44 (0)1869 238326

Fax: +44 (0)1869 238327

US Office

Everest Biotech c/o Abcore

405 Maple Street, Suite A106
Ramona,
CA 92065
USA

Inquiries:

info@everestbiotech.com

Sales:

usasales@everestbiotech.com

Tech support:

support@everestbiotech.com

Tel: 888-320-4628 (toll-free)

Fax: 888-841-9041

www.everestbiotech.com

**Research Use Only. Not for
diagnostic or therapeutic use.**

EB07058 - Goat Anti-ROBO1 / DUTT1 (Internal) Antibody

Size: 100µg specific antibody in 200µl



Target Protein

Principal Names: ROBO1, DUTT1, roundabout, axon guidance receptor, homolog 1 (Drosophila), HGNC:10249, FLJ21882, SAX3, axon guidance receptor, roundabout 1, MGC131599, MGC133277

Official Symbol: ROBO1

Accession Number(s): NP_002932.1; NP_598334.1

Human GeneID(s): [6091](#)

Non-Human GeneID(s): 19876 (mouse), 58946 (rat)

Important Comments: Not expected to cross-react with ROBO2 or ROBO3.

Immunogen

Peptide with sequence C-GDVDSLNNKINEMK, from the internal region of the protein sequence according to NP_002932.1; NP_598334.1.

Please note the [peptide](#) is available for sale.

Purification and Storage

Purified from goat serum by ammonium sulphate precipitation followed by antigen affinity chromatography using the immunizing peptide.

Supplied at 0.5 mg/ml in Tris saline, 0.02% sodium azide, pH7.3 with 0.5% bovine serum albumin.

Aliquot and store at -20°C. Minimize freezing and thawing.

Applications Tested

Peptide ELISA: antibody detection limit dilution 1:16000.

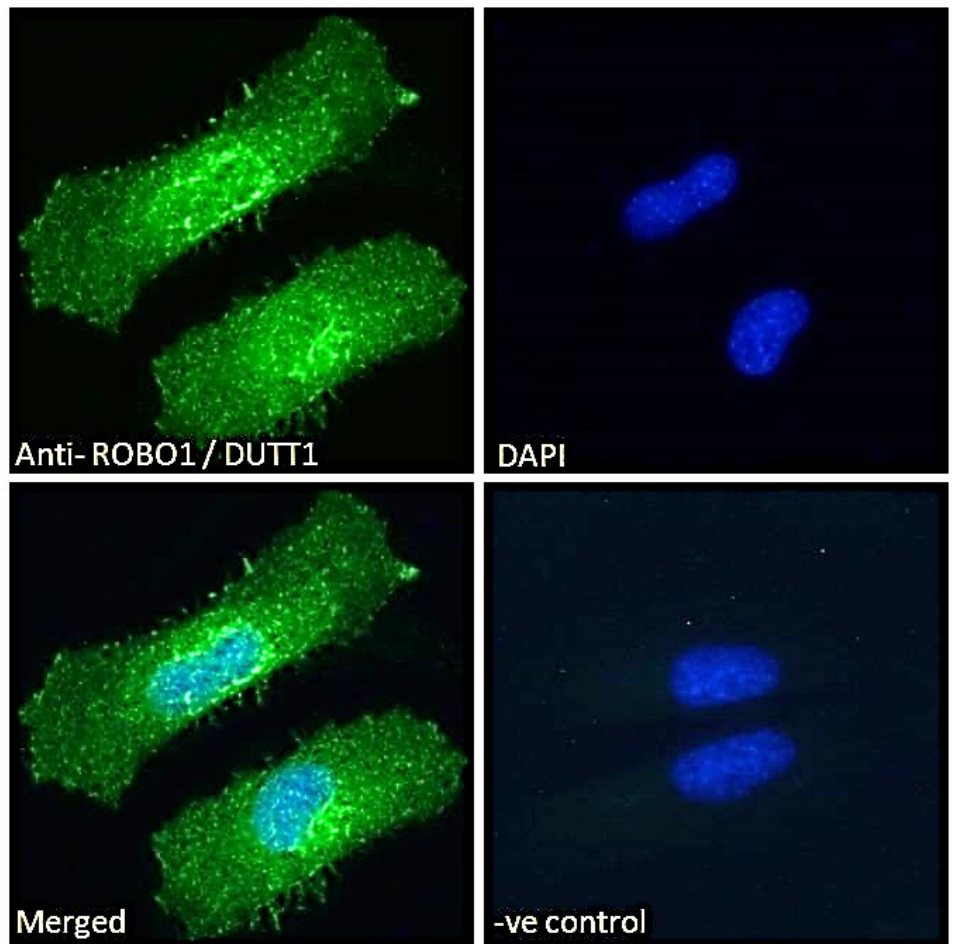
IHC: Paraffin embedded Human Brain (Cortex) and Kidney. Recommended concentration: 5-6µg/ml.

Immunofluorescence: Strong expression of the protein seen in the Plasma membrane and Golgi/ER of HeLa and U2OS cells. Recommended concentration: 10µg/ml.

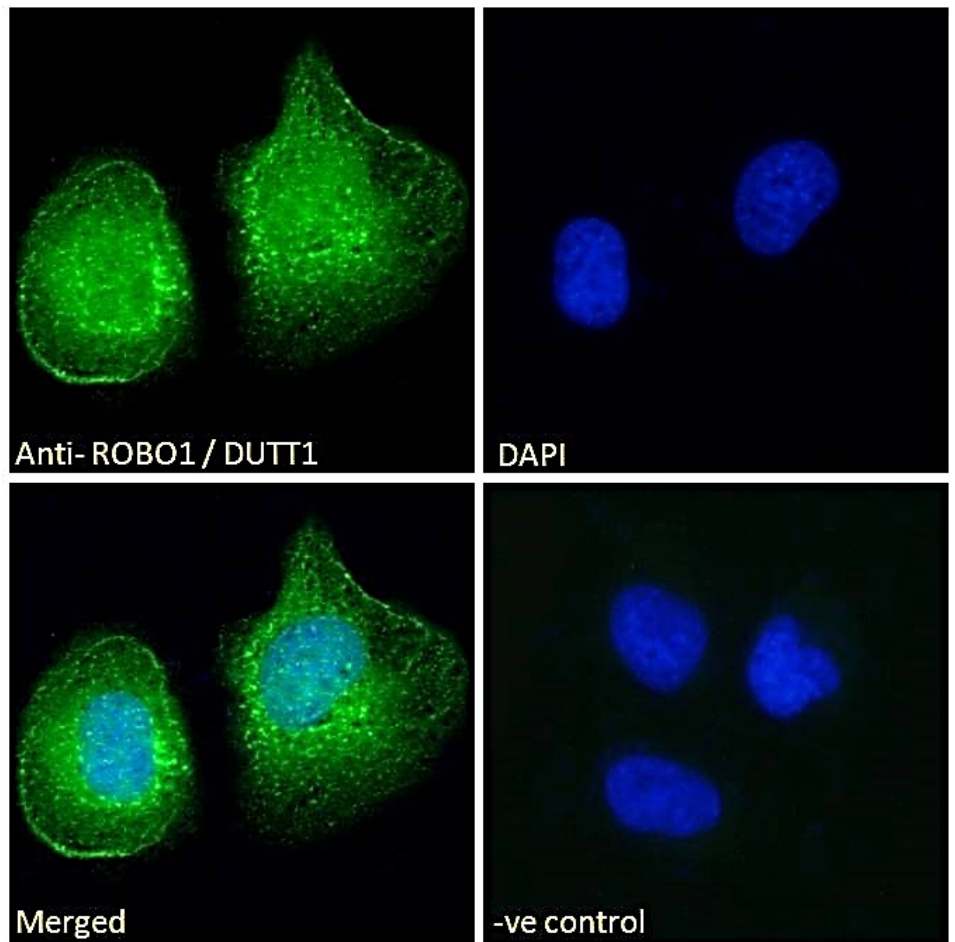
Species Reactivity

Tested: Human

Expected from sequence similarity: Human, Mouse, Rat, Dog, Cow



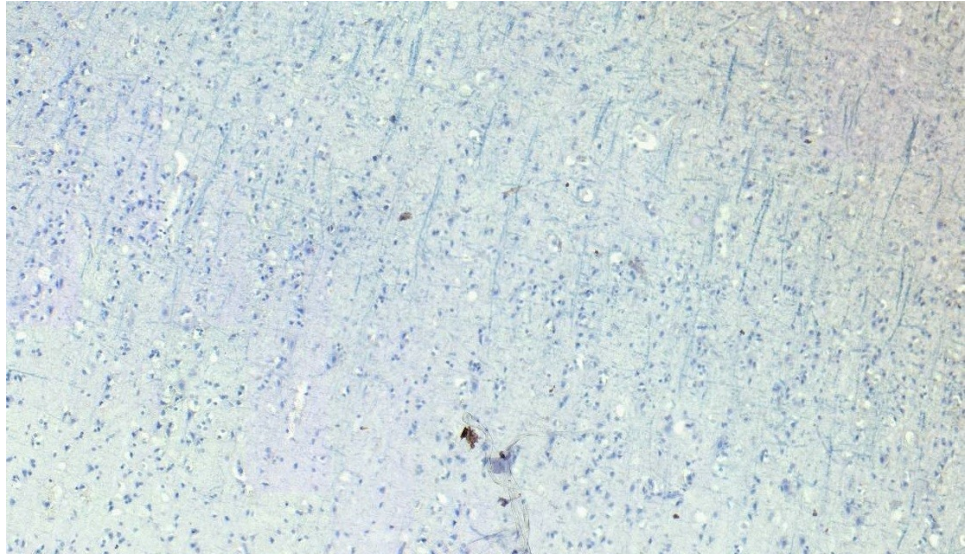
EB07058 Immunofluorescence analysis of paraformaldehyde fixed HeLa cells, permeabilized with 0.15% Triton. Primary incubation 1hr (10ug/ml) followed by Alexa Fluor 488 secondary antibody (2ug/ml), showing Plasma membrane and Golgi staining. The nuclear stain is DAPI (blue). Negative control: Unimmunized goat IgG (10ug/ml) followed by Alexa Fluor 488 secondary antibody (2ug/ml).



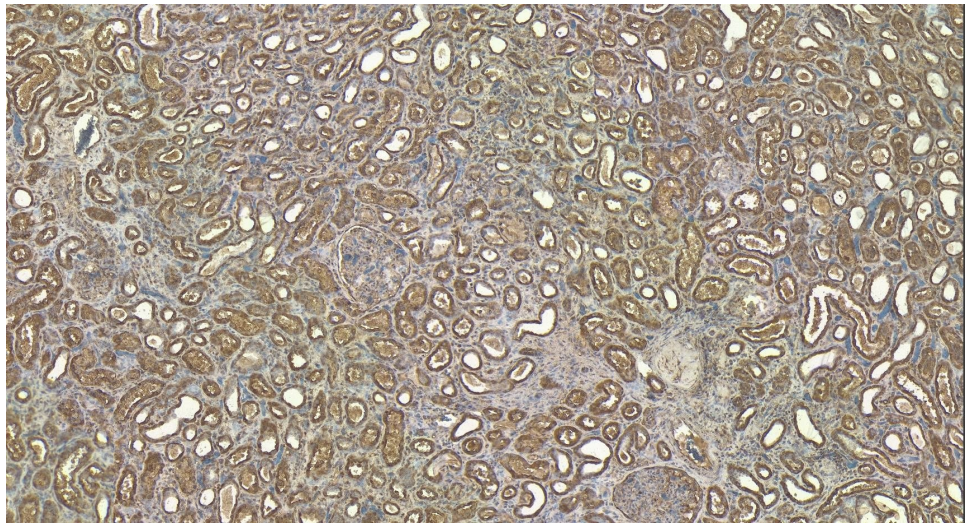
EB07058 Immunofluorescence analysis of paraformaldehyde fixed U2OS cells, permeabilized with 0.15% Triton. Primary incubation 1hr (10ug/ml) followed by Alexa Fluor 488 secondary antibody (2ug/ml), showing Plasma membrane and ER staining. The nuclear stain is DAPI (blue). Negative control: Unimmunized goat IgG (10ug/ml) followed by Alexa Fluor 488 secondary antibody (2ug/ml).



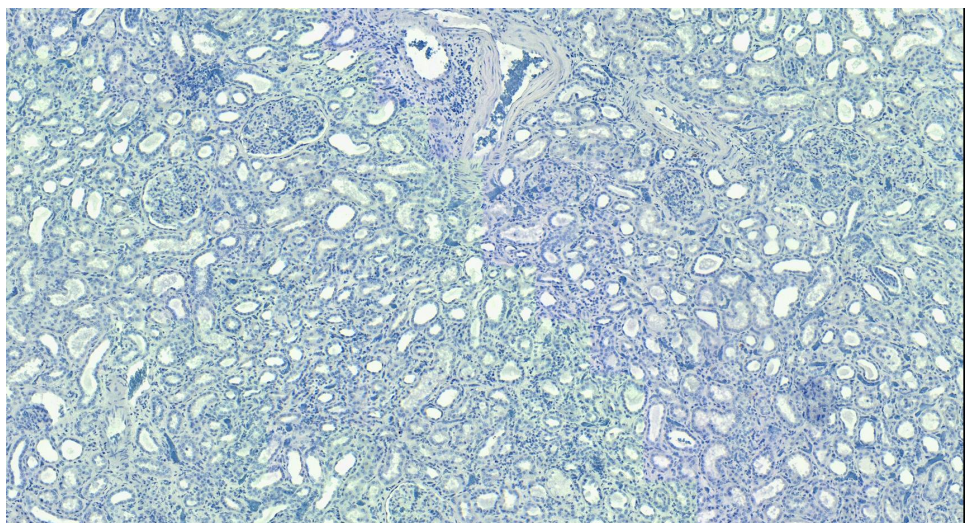
EB07058 (5µg/ml) staining of paraffin embedded Human Cortex. Heat induced antigen retrieval with citrate buffer pH 6, HRP-staining.



EB07058 Negative Control showing staining of paraffin embedded Human Cortex, with no primary antibody.



EB07058 (6µg/ml) staining of paraffin embedded Human Kidney. Heat induced antigen retrieval with citrate buffer pH 6, HRP-staining.



EB07058 Negative Control showing staining of paraffin embedded Human Kidney, with no primary antibody.