



## UK Office

### Everest Biotech Ltd

Cherwell Innovation Centre  
77 Heyford Park  
Upper Heyford  
Oxfordshire  
OX25 5HD  
UK

Enquiries:

[info@everestbiotech.com](mailto:info@everestbiotech.com)

Sales:

[sales@everestbiotech.com](mailto:sales@everestbiotech.com)

Tech support:

[support@everestbiotech.com](mailto:support@everestbiotech.com)

Tel: +44 (0)1869 238326

Fax: +44 (0)1869 238327

## US Office

### Everest Biotech c/o Abcore

405 Maple Street, Suite A106  
Ramona,  
CA 92065  
USA

Inquiries:

[info@everestbiotech.com](mailto:info@everestbiotech.com)

Sales:

[usasales@everestbiotech.com](mailto:usasales@everestbiotech.com)

Tech support:

[support@everestbiotech.com](mailto:support@everestbiotech.com)

Tel: 888-320-4628 (toll-free)

Fax: 888-841-9041

[www.everestbiotech.com](http://www.everestbiotech.com)

**Research Use Only. Not for  
diagnostic or therapeutic use.**

## EB06420 - Goat Anti-RANBP1 Antibody

Size: 100µg specific antibody in 200µl



### Target Protein

**Principal Names:** RANBP1, RAN binding protein 1

**Official Symbol:** RANBP1

**Accession Number(s):** NP\_002873.1; NP\_001265568.1; NP\_001265569.1;  
NP\_001265570.1

**Human GeneID(s):** [5902](#)

**Important Comments:** This antibody is expected to recognise reported isoforms 1, 2, 3 and 4.

### Immunogen

Peptide with sequence C-LSVKEETKEDAEKQ, from the C Terminus of the protein sequence according to NP\_002873.1; NP\_001265568.1; NP\_001265569.1; NP\_001265570.1.

Please note the [peptide](#) is available for sale.

### Purification and Storage

Purified from goat serum by ammonium sulphate precipitation followed by antigen affinity chromatography using the immunizing peptide.

Supplied at 0.5 mg/ml in Tris saline, 0.02% sodium azide, pH7.3 with 0.5% bovine serum albumin.

Aliquot and store at -20°C. Minimize freezing and thawing.

### Applications Tested

**Peptide ELISA:** antibody detection limit dilution 1:16000.

**Western blot:** Approx. 26-27kDa band observed in lysates of cell lines A431 HeLa and MCF7 and in Human Duodenum lysates, (calculated MW of 23.3kDa according to NP\_002873.1). This molecular weight is routinely observed by other sources.

Recommended concentration: 0.03-0.5µg/ml. Primary incubation 1 hour at room temperature.

**IHC:** In paraffin embedded Human Kidney shows pixulated cytoplasm staining in DCT.

Recommended concentration: 3-5µg/ml.

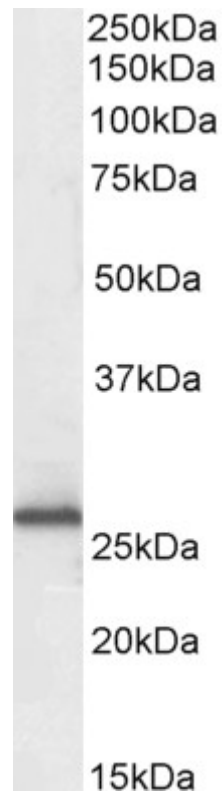
**Immunofluorescence:** Strong expression of the protein seen in the cytoplasm of HEK293 and HeLa cells. Recommended concentration: 10µg/ml.

**Flow Cytometry:** Flow cytometric analysis of HEK293 cells. Recommended concentration: 10ug/ml.

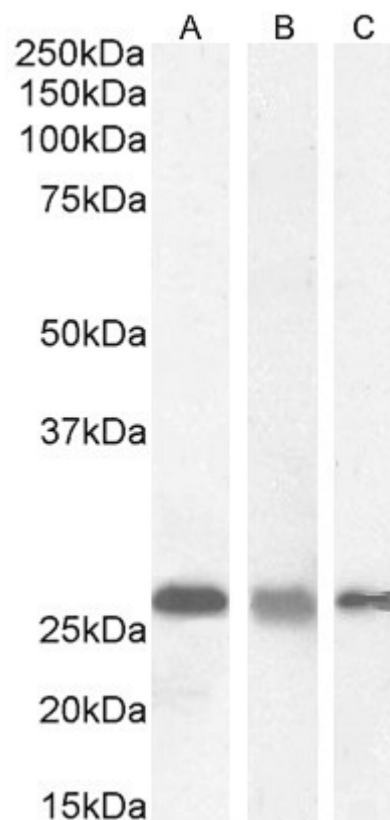
### Species Reactivity

**Tested:** Human

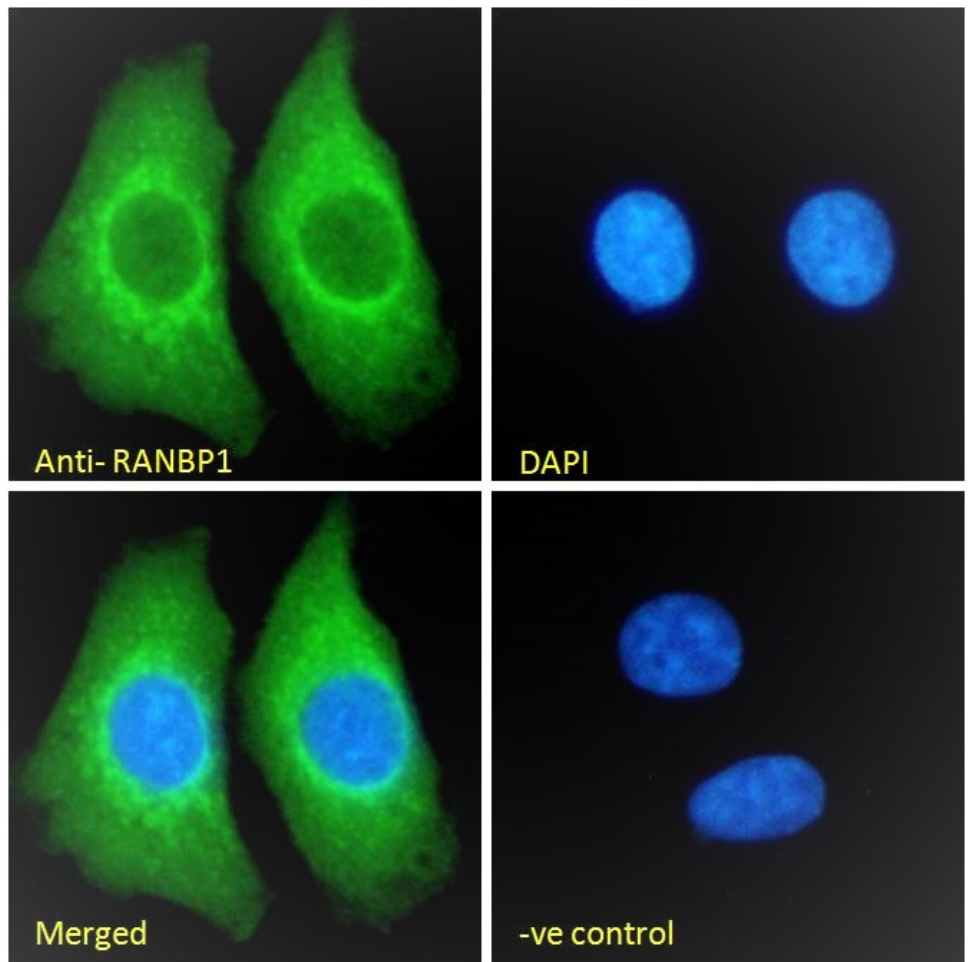
**Expected from sequence similarity:** Human



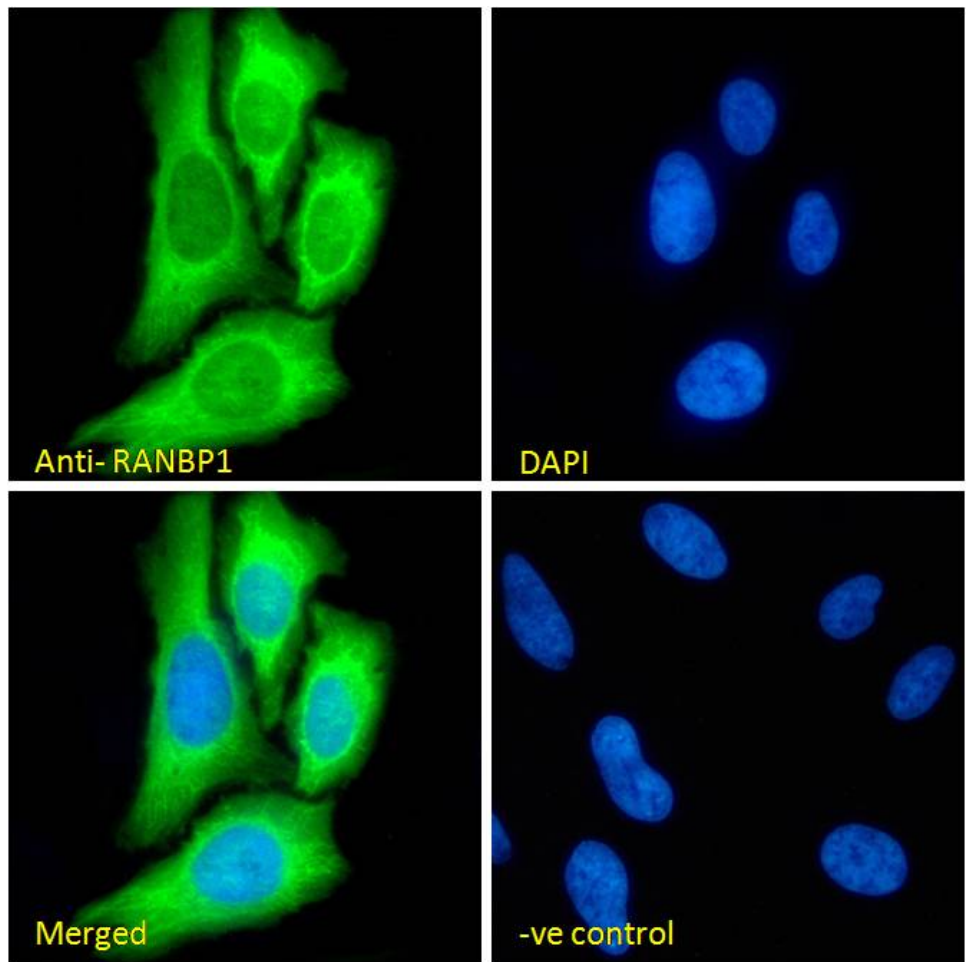
EB06420 (0.3µg/ml) staining of Human Duodenum lysate (35µg protein in RIPA buffer). Detected by chemiluminescence.



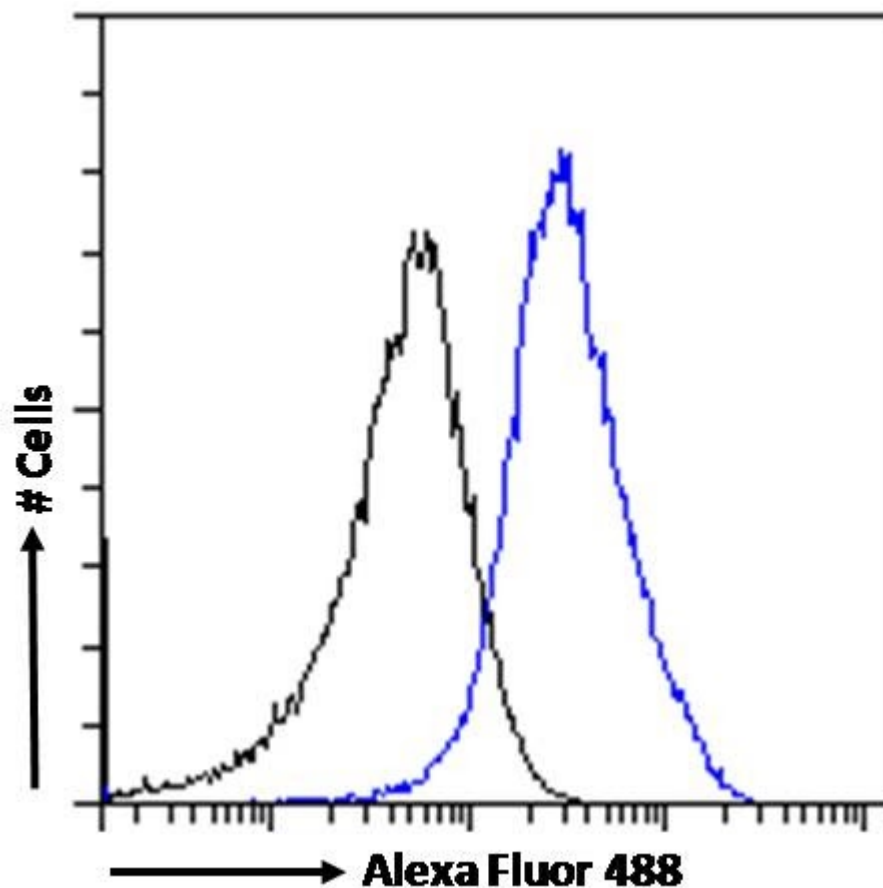
EB06420 (0.03µg/ml) staining of A431 (A), (0.5ug/ml) HeLa (B) and (0.1ug/ml) MCF7 (C) cell lysate (35µg protein in RIPA buffer). Detected by chemiluminescence.



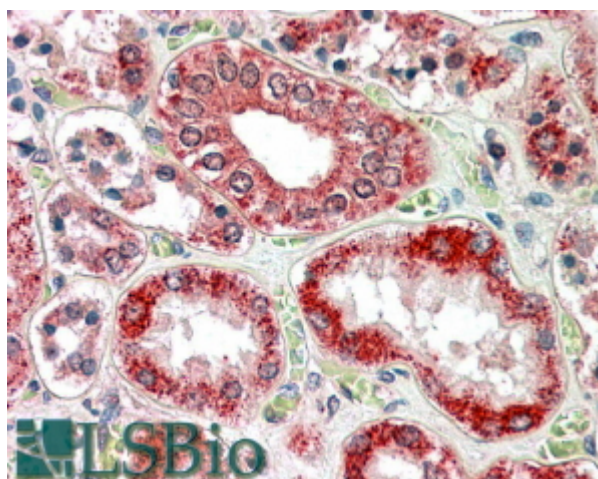
EB06420 Immunofluorescence analysis of paraformaldehyde fixed HEK293 cells, permeabilized with 0.15% Triton. Primary incubation 1hr (10ug/ml) followed by Alexa Fluor 488 secondary antibody (2ug/ml), showing cytoplasmic staining. The nuclear stain is DAPI (blue). Negative control: Unimmunized goat IgG (10ug/ml) followed by Alexa Fluor 488 secondary antibody (2ug/ml).



EB06420 Immunofluorescence analysis of paraformaldehyde fixed HeLa cells, permeabilized with 0.15% Triton. Primary incubation 1hr (10ug/ml) followed by Alexa Fluor 488 secondary antibody (2ug/ml), showing cytoplasmic staining. The nuclear stain is DAPI (blue). Negative control: Unimmunized goat IgG (10ug/ml) followed by Alexa Fluor 488 secondary antibody (2ug/ml).



EB06420 Flow cytometric analysis of paraformaldehyde fixed HEK293 cells (blue line), permeabilized with 0.5% Triton. Primary incubation 1hr (10ug/ml) followed by Alexa Fluor 488 secondary antibody (1ug/ml). IgG control: Unimmunized goat IgG (black line) followed by Alexa Fluor 488 secondary antibody.



EB6420 (3.8µg/ml) staining of paraffin embedded Human Kidney. Steamed antigen retrieval with citrate buffer pH 6, AP-staining.