



UK Office

Everest Biotech Ltd

Cherwell Innovation Centre
77 Heyford Park
Upper Heyford
Oxfordshire
OX25 5HD
UK

Enquiries:

info@everestbiotech.com

Sales:

sales@everestbiotech.com

Tech support:

support@everestbiotech.com

Tel: +44 (0)1869 238326

Fax: +44 (0)1869 238327

US Office

Everest Biotech c/o Abcore

405 Maple Street, Suite A106
Ramona,
CA 92065
USA

Inquiries:

info@everestbiotech.com

Sales:

usasales@everestbiotech.com

Tech support:

support@everestbiotech.com

Tel: 888-320-4628 (toll-free)

Fax: 888-841-9041

www.everestbiotech.com

**Research Use Only. Not for
diagnostic or therapeutic use.**

EB06420-T - Goat Anti-RANBP1 Antibody - Trial

Size: 20µg specific antibody in 40µl



Target Protein

Principal Names: RANBP1, RAN binding protein 1

Official Symbol: RANBP1

Accession Number(s): NP_002873.1; NP_001265568.1; NP_001265569.1;
NP_001265570.1

Human GeneID(s): [5902](#)

Important Comments: This antibody is expected to recognise reported isoforms 1, 2, 3 and 4.

Immunogen

Peptide with sequence C-LSVKEETKEDAEKQ, from the C Terminus of the protein sequence according to NP_002873.1; NP_001265568.1; NP_001265569.1; NP_001265570.1.

Please note the [peptide](#) is available for sale.

Purification and Storage

Purified from goat serum by ammonium sulphate precipitation followed by antigen affinity chromatography using the immunizing peptide.

Supplied at 0.5 mg/ml in Tris saline, 0.02% sodium azide, pH7.3 with 0.5% bovine serum albumin.

Aliquot and store at -20°C. Minimize freezing and thawing.

Applications Tested

Peptide ELISA: antibody detection limit dilution 1:16000.

Western blot: Approx. 26-27kDa band observed in lysates of cell lines A431 HeLa and MCF7 and in Human Duodenum lysates, (calculated MW of 23.3kDa according to NP_002873.1). This molecular weight is routinely observed by other sources.

Recommended concentration: 0.03-0.5µg/ml. Primary incubation 1 hour at room temperature.

IHC: In paraffin embedded Human Kidney shows pixulated cytoplasm staining in DCT.

Recommended concentration: 3-5µg/ml.

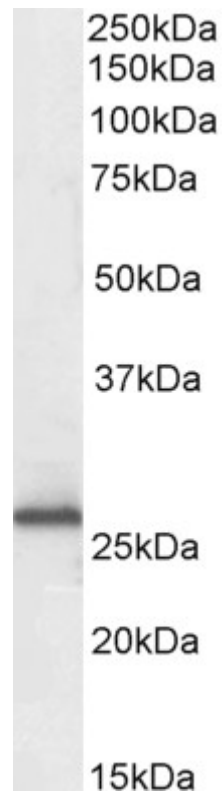
Immunofluorescence: Strong expression of the protein seen in the cytoplasm of HEK293 and HeLa cells. Recommended concentration: 10µg/ml.

Flow Cytometry: Flow cytometric analysis of HEK293 cells. Recommended concentration: 10ug/ml.

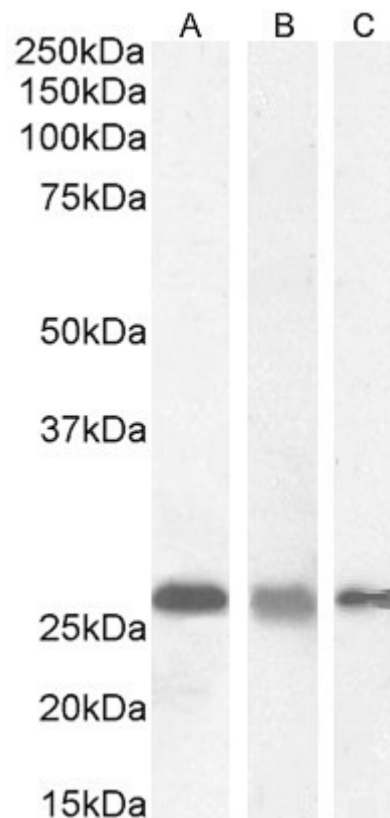
Species Reactivity

Tested: Human

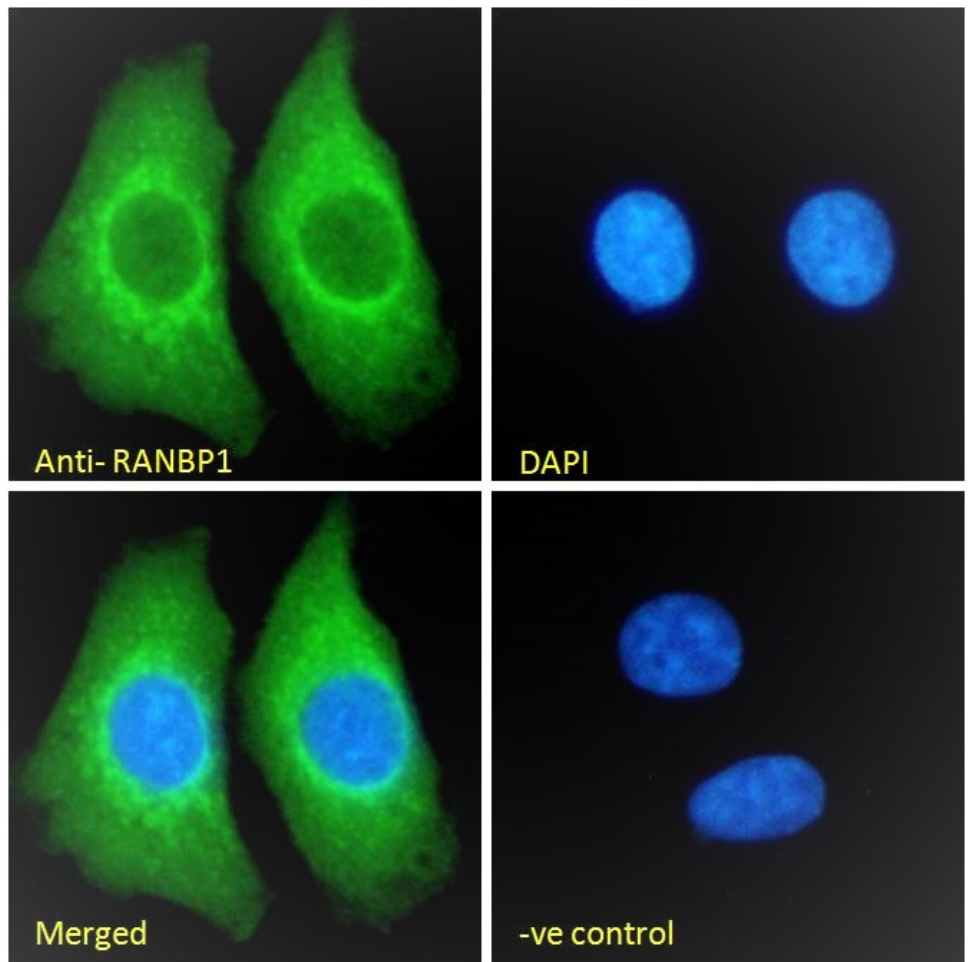
Expected from sequence similarity: Human



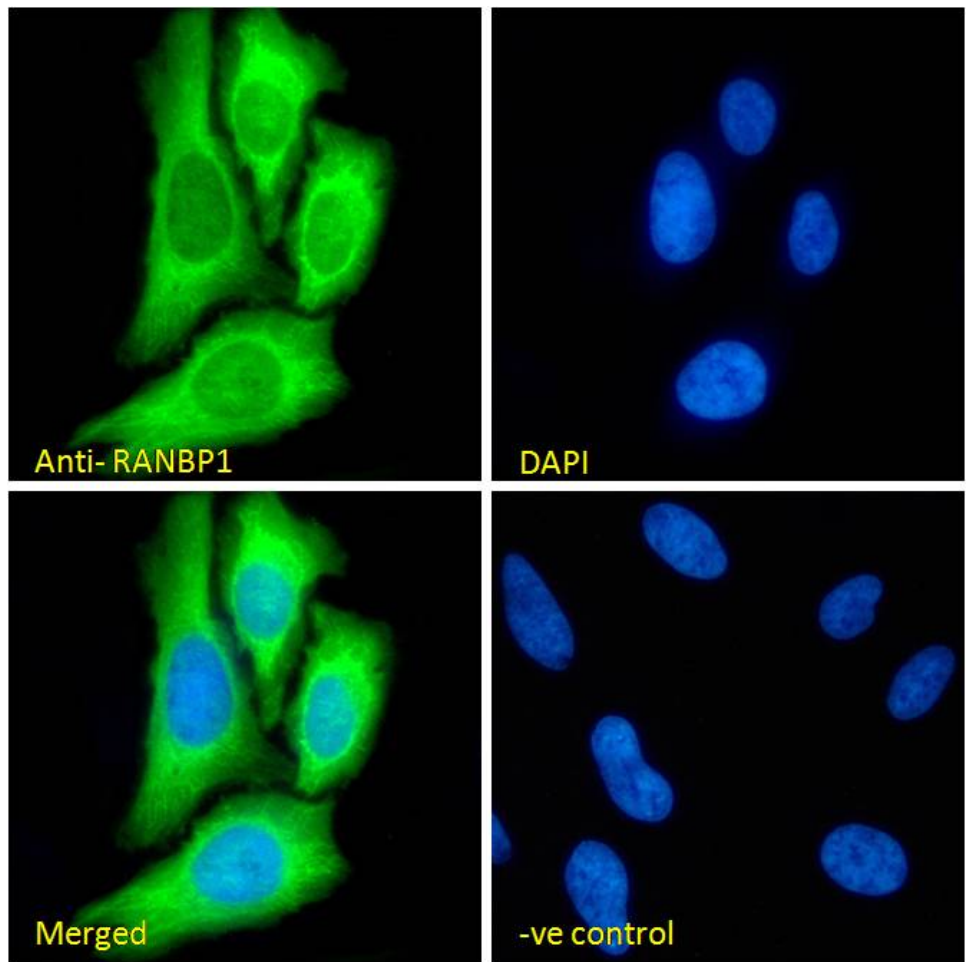
EB06420 (0.3µg/ml) staining of Human Duodenum lysate (35µg protein in RIPA buffer). Detected by chemiluminescence.



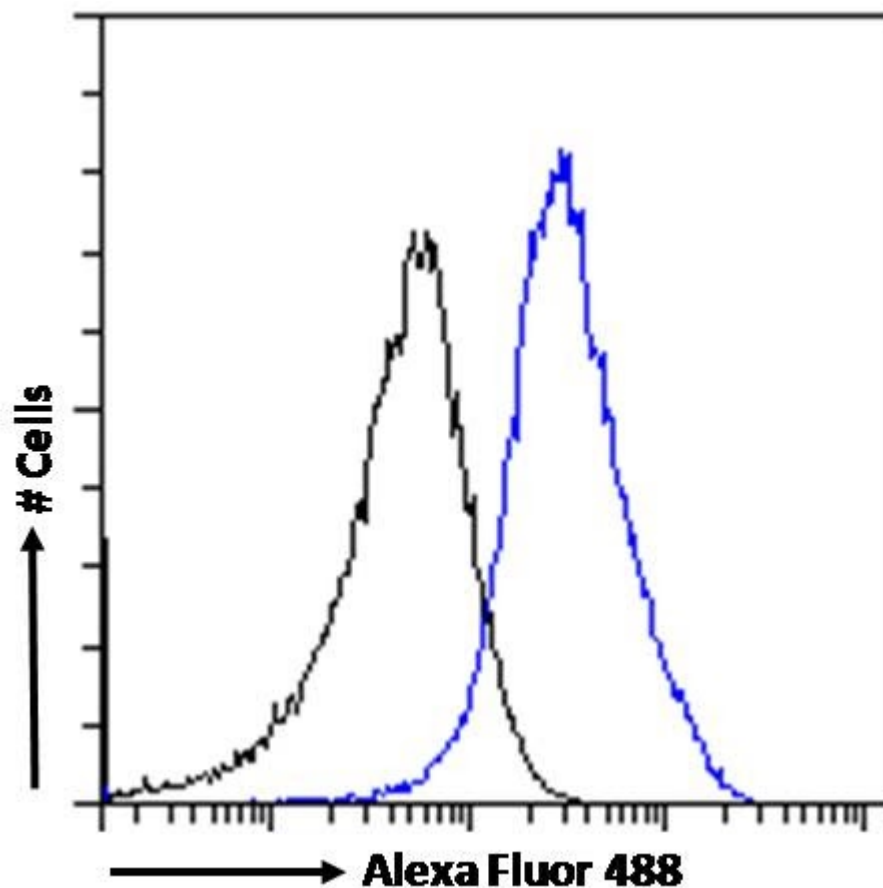
EB06420 (0.03µg/ml) staining of A431 (A), (0.5ug/ml) HeLa (B) and (0.1ug/ml) MCF7 (C) cell lysate (35µg protein in RIPA buffer). Detected by chemiluminescence.



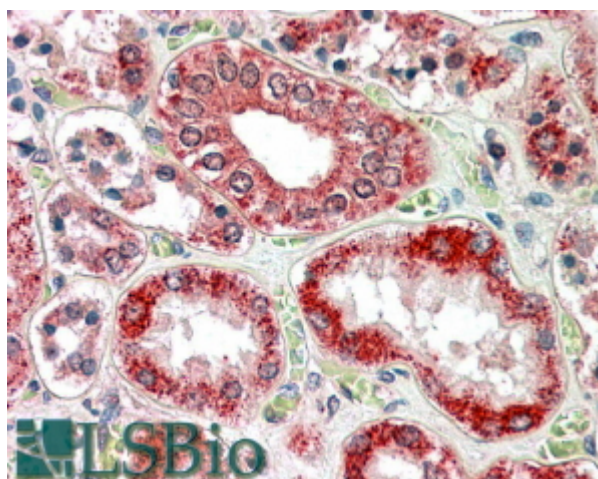
EB06420 Immunofluorescence analysis of paraformaldehyde fixed HEK293 cells, permeabilized with 0.15% Triton. Primary incubation 1hr (10ug/ml) followed by Alexa Fluor 488 secondary antibody (2ug/ml), showing cytoplasmic staining. The nuclear stain is DAPI (blue). Negative control: Unimmunized goat IgG (10ug/ml) followed by Alexa Fluor 488 secondary antibody (2ug/ml).



EB06420 Immunofluorescence analysis of paraformaldehyde fixed HeLa cells, permeabilized with 0.15% Triton. Primary incubation 1hr (10ug/ml) followed by Alexa Fluor 488 secondary antibody (2ug/ml), showing cytoplasmic staining. The nuclear stain is DAPI (blue). Negative control: Unimmunized goat IgG (10ug/ml) followed by Alexa Fluor 488 secondary antibody (2ug/ml).



EB06420 Flow cytometric analysis of paraformaldehyde fixed HEK293 cells (blue line), permeabilized with 0.5% Triton. Primary incubation 1hr (10ug/ml) followed by Alexa Fluor 488 secondary antibody (1ug/ml). IgG control: Unimmunized goat IgG (black line) followed by Alexa Fluor 488 secondary antibody.



EB6420 (3.8μg/ml) staining of paraffin embedded Human Kidney. Steamed antigen retrieval with citrate buffer pH 6, AP-staining.