



## UK Office

### Everest Biotech Ltd

Cherwell Innovation Centre  
77 Heyford Park  
Upper Heyford  
Oxfordshire  
OX25 5HD  
UK

Enquiries:

[info@everestbiotech.com](mailto:info@everestbiotech.com)

Sales:

[sales@everestbiotech.com](mailto:sales@everestbiotech.com)

Tech support:

[support@everestbiotech.com](mailto:support@everestbiotech.com)

Tel: +44 (0)1869 238326

Fax: +44 (0)1869 238327

## US Office

### Everest Biotech c/o Abcore

405 Maple Street, Suite A106  
Ramona,  
CA 92065  
USA

Inquiries:

[info@everestbiotech.com](mailto:info@everestbiotech.com)

Sales:

[usasales@everestbiotech.com](mailto:usasales@everestbiotech.com)

Tech support:

[support@everestbiotech.com](mailto:support@everestbiotech.com)

Tel: 888-320-4628 (toll-free)

Fax: 888-841-9041

[www.everestbiotech.com](http://www.everestbiotech.com)

**Research Use Only. Not for  
diagnostic or therapeutic use.**

## EB05314 - Goat Anti-RAC2 Antibody

Size: 100µg specific antibody in 200µl



### Target Protein

**Principal Names:** RAC2, ras-related C3 botulinum toxin substrate 2 (rho family, small GTP binding protein Rac2), EN-7, Ras-related C3 botulinum toxin substrate 2, rho family, small GTP binding protein Rac2, Ras-related C3 botulinum toxin substrate 3 (rho family, small GTP-binding protein Rac2), Gx, HSPC022, small G protein

**Official Symbol:** RAC2

**Accession Number(s):** NP\_002863.1

**Human GeneID(s):** [5880](#)

### Immunogen

Peptide with sequence PGPTRQQKRACSL, from the C Terminus of the protein sequence according to NP\_002863.1.

Please note the [peptide](#) is available for sale.

### Purification and Storage

Purified from goat serum by ammonium sulphate precipitation followed by antigen affinity chromatography using the immunizing peptide.

Supplied at 0.5 mg/ml in Tris saline, 0.02% sodium azide, pH7.3 with 0.5% bovine serum albumin.

Aliquot and store at -20°C. Minimize freezing and thawing.

### Applications Tested

**Peptide ELISA:** antibody detection limit dilution 1:32000.

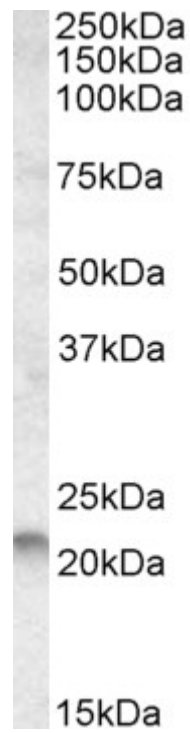
**Western blot:** Approx 22kDa band observed in lysates of cell line Molt4 (calculated MW of 21.4kDa according to NP\_002863.1). Recommended concentration: 0.1-0.3µg/ml. Primary incubation 1 hour at room temperature.

**IHC:** In paraffin embedded Human Tonsil shows staining in mantle zone and some in the interfollicular area. Understained in germinal centre. Recommended concentration, 2-4µg/ml.

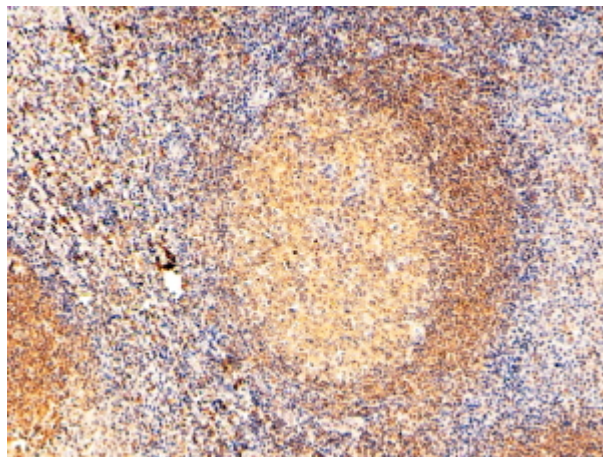
### Species Reactivity

**Tested:** Human

**Expected from sequence similarity:** Human, Mouse, Rat



EB05314 (0.1µg/ml) staining of Molt4 lysate (35µg protein in RIPA buffer). Detected by chemiluminescence.



EB05314 (2µg/ml) staining of paraffin embedded Human Tonsil. Steamed antigen retrieval with Tris/EDTA buffer pH 9, HRP-staining.