



## UK Office

### Everest Biotech Ltd

Cherwell Innovation Centre  
77 Heyford Park  
Upper Heyford  
Oxfordshire  
OX25 5HD  
UK

Enquiries:

[info@everestbiotech.com](mailto:info@everestbiotech.com)

Sales:

[sales@everestbiotech.com](mailto:sales@everestbiotech.com)

Tech support:

[support@everestbiotech.com](mailto:support@everestbiotech.com)

Tel: +44 (0)1869 238326

Fax: +44 (0)1869 238327

## US Office

### Everest Biotech c/o Abcore

405 Maple Street, Suite A106  
Ramona,  
CA 92065  
USA

Inquiries:

[info@everestbiotech.com](mailto:info@everestbiotech.com)

Sales:

[usasales@everestbiotech.com](mailto:usasales@everestbiotech.com)

Tech support:

[support@everestbiotech.com](mailto:support@everestbiotech.com)

Tel: 888-320-4628 (toll-free)

Fax: 888-841-9041

[www.everestbiotech.com](http://www.everestbiotech.com)

**Research Use Only. Not for  
diagnostic or therapeutic use.**

## EB12928 - Goat Anti-PTGES2 (aa292-306) Antibody

Size: 100µg specific antibody in 200µl



### Target Protein

**Principal Names:** PTGES2, prostaglandin E synthase 2, C9orf15, GBF-1, GBF1, PGES2, mPGES-2, GATE-binding factor 1, gamma-interferon-activated transcriptional element-binding factor 1, membrane-associated prostaglandin E synthase 2, microsomal prostaglandin E synthase-2

**Official Symbol:** PTGES2

**Accession Number(s):** NP\_079348.1; NP\_945176.1

**Human GeneID(s):** [80142](#)

**Important Comments:** This antibody is expected to recognize both reported isoforms (NP\_079348.1; NP\_945176.1). Reported variants represent identical protein: NP\_001243264.1, NP\_945176.1.

### Immunogen

Peptide with sequence C-RLKSRHRLQDNVRED, from the internal region of the protein sequence according to NP\_079348.1; NP\_945176.1.

Please note the [peptide](#) is available for sale.

### Purification and Storage

Purified from goat serum by ammonium sulphate precipitation followed by antigen affinity chromatography using the immunizing peptide.

Supplied at 0.5 mg/ml in Tris saline, 0.02% sodium azide, pH7.3 with 0.5% bovine serum albumin.

Aliquot and store at -20°C. Minimize freezing and thawing.

### Applications Tested

**Peptide ELISA:** antibody detection limit dilution 1:128000.

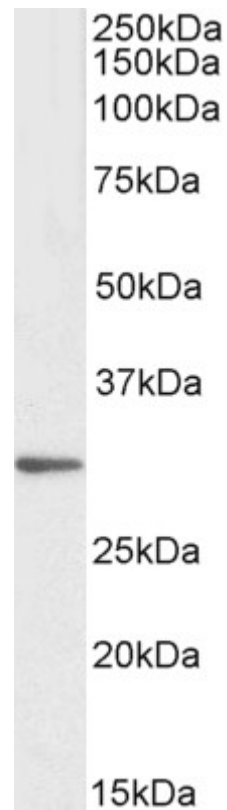
**Western blot:** Approx 30kDa band observed in lysates of cell line HeLa (calculated MW of 41.9kDa according to NP\_079348.1). This molecular weight is routinely observed by other sources. Recommended concentration: 1-3µg/ml.

**IHC:** Paraffin embedded Human Brain (Cortex) and Heart. Recommended concentration: 5µg/ml.

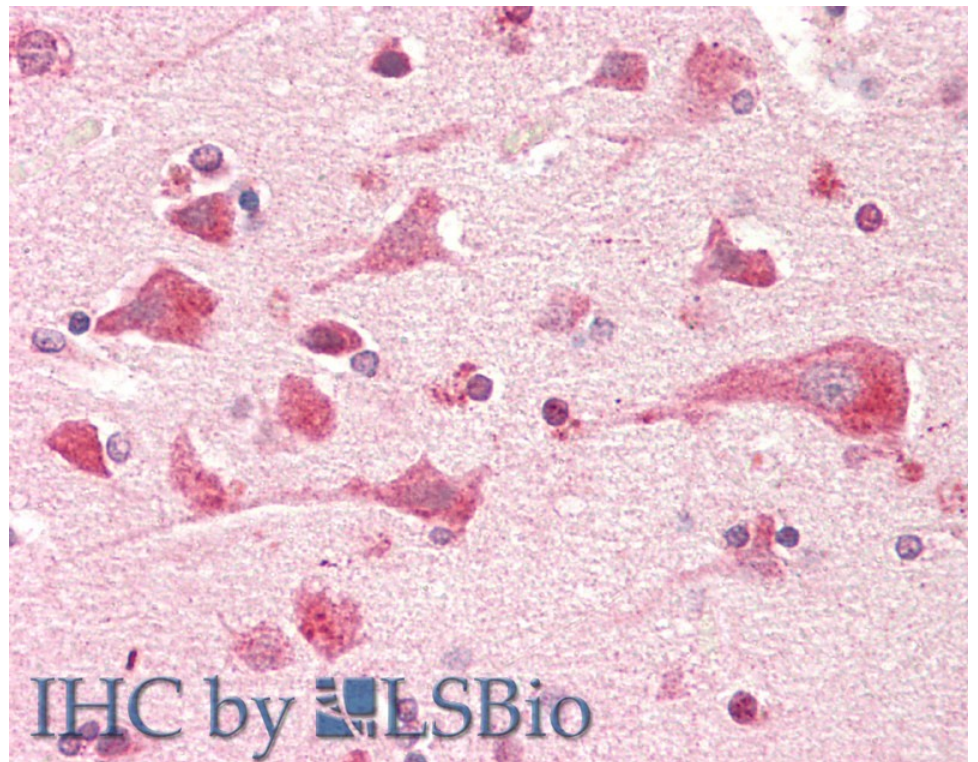
### Species Reactivity

**Tested:** Human

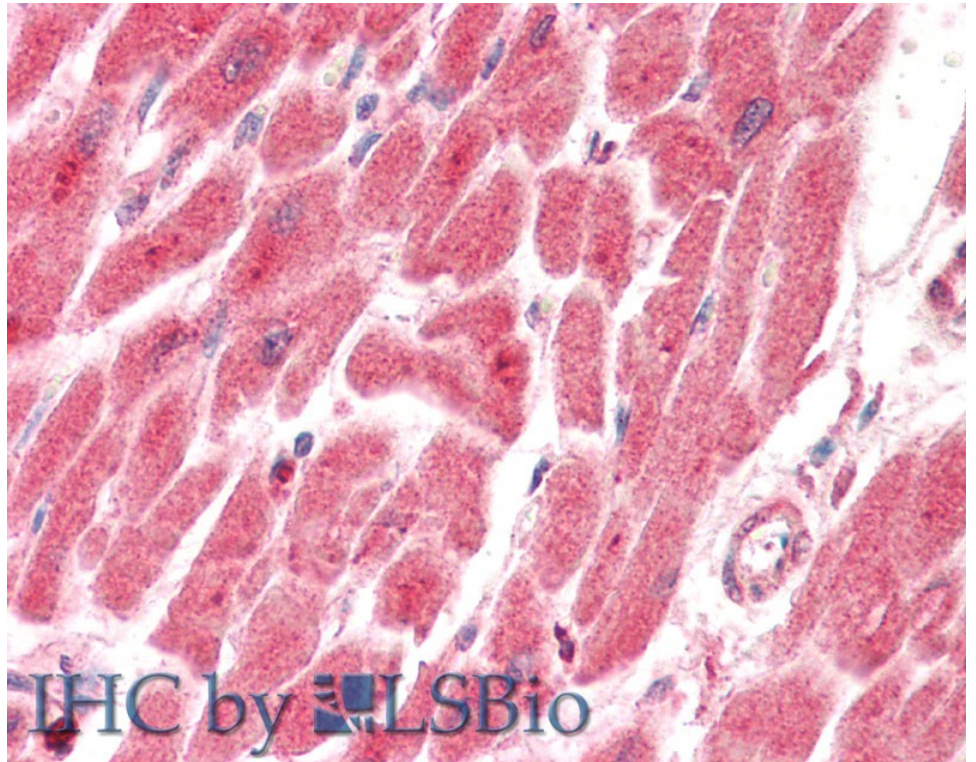
**Expected from sequence similarity:** Human



EB12989 (1µg/ml) staining of HeLa lysate (35µg protein in RIPA buffer). Primary incubation was 1 hour.  
Detected by chemiluminescence.



EB12928 (5µg/ml) staining of paraffin embedded Human Cortex. Steamed antigen retrieval with citrate buffer pH 6, AP-staining.



EB12928 (5µg/ml) staining of paraffin embedded Human Heart. Steamed antigen retrieval with citrate buffer pH 6, AP-staining.