



## UK Office

### Everest Biotech Ltd

Cherwell Innovation Centre  
77 Heyford Park  
Upper Heyford  
Oxfordshire  
OX25 5HD  
UK

Enquiries:

[info@everestbiotech.com](mailto:info@everestbiotech.com)

Sales:

[sales@everestbiotech.com](mailto:sales@everestbiotech.com)

Tech support:

[support@everestbiotech.com](mailto:support@everestbiotech.com)

Tel: +44 (0)1869 238326

Fax: +44 (0)1869 238327

## US Office

### Everest Biotech c/o Abcore

405 Maple Street, Suite A106  
Ramona,  
CA 92065  
USA

Inquiries:

[info@everestbiotech.com](mailto:info@everestbiotech.com)

Sales:

[usasales@everestbiotech.com](mailto:usasales@everestbiotech.com)

Tech support:

[support@everestbiotech.com](mailto:support@everestbiotech.com)

Tel: 888-320-4628 (toll-free)

Fax: 888-841-9041

[www.everestbiotech.com](http://www.everestbiotech.com)

**Research Use Only. Not for  
diagnostic or therapeutic use.**

## EB03004 - Goat Anti-phospho-CD244 / 2B4 Antibody

Size: 100µg specific antibody in 200µl



### Target Protein

**Principal Names:** CD244, CD244 molecule, natural killer cell receptor 2B4, 2B4, NAIL, NKR2B4, Nmrk, SLAMF4, CD244 natural killer cell receptor 2B4, NK cell activation inducing ligand NAIL, natural killer cell receptor 2B4

**Official Symbol:** CD244

**Accession Number(s):** NP\_057466.1

**Human GeneID(s):** [51744](#)

### Immunogen

Peptide with sequence C-EFLTIpYEDVKD, from the internal region of the protein sequence according to NP\_057466.1.

Please note the [peptide](#) is available for sale.

### Purification and Storage

Purified from goat serum by ammonium sulphate precipitation followed by antigen affinity chromatography using the immunizing peptide.

Supplied at 0.5 mg/ml in Tris saline, 0.02% sodium azide, pH7.3 with 0.5% bovine serum albumin.

Aliquot and store at -20°C. Minimize freezing and thawing.

### Applications Tested

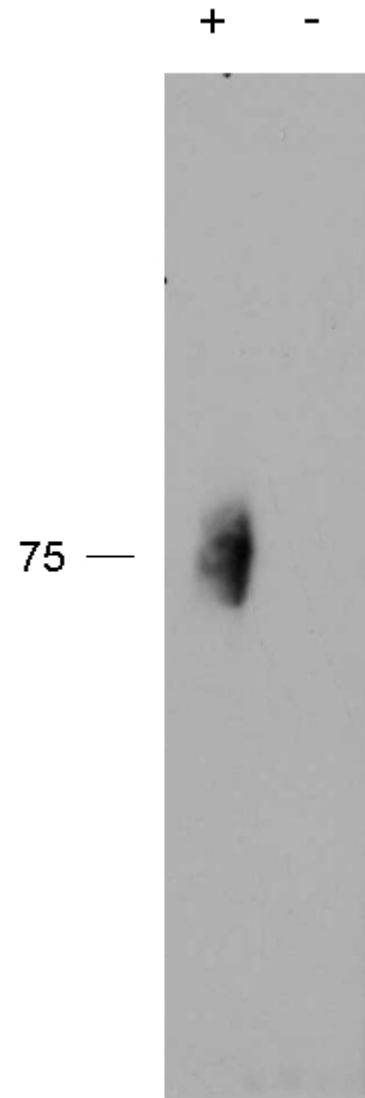
**Peptide ELISA:** antibody detection limit dilution 1:64000.

**Immunoprecipitation:** Approx 75kDa band observed in Human Natural Killer (NK) cell lysates after with immunoprecipitation mouse monoclonal antibody C1.7 coupled to Protein G agarose (calculated MW of 41.1kDa according to NP\_057466.1). We do note that CD244 is a glycoprotein which makes a higher size band to be expected.  
Recommended concentration: 1-3µg/ml.

### Species Reactivity

**Tested:** Human

**Expected from sequence similarity:** Human



EB03004 (2µg/ml) staining of IP from a lysate of Human Natural Killer cells with (+) or without (-) pervanadate treatment of the cells. Primary incubation was 1 hour. Detected by chemiluminescence. Data kindly provided by Dr Nicholas G Clarkson, Sir William Dunn School of Pathology, Oxford, UK