



## UK Office

### Everest Biotech Ltd

Cherwell Innovation Centre  
77 Heyford Park  
Upper Heyford  
Oxfordshire  
OX25 5HD  
UK

Enquiries:

[info@everestbiotech.com](mailto:info@everestbiotech.com)

Sales:

[sales@everestbiotech.com](mailto:sales@everestbiotech.com)

Tech support:

[support@everestbiotech.com](mailto:support@everestbiotech.com)

Tel: +44 (0)1869 238326

Fax: +44 (0)1869 238327

## US Office

### Everest Biotech c/o Abcore

405 Maple Street, Suite A106  
Ramona,  
CA 92065  
USA

Inquiries:

[info@everestbiotech.com](mailto:info@everestbiotech.com)

Sales:

[usasales@everestbiotech.com](mailto:usasales@everestbiotech.com)

Tech support:

[support@everestbiotech.com](mailto:support@everestbiotech.com)

Tel: 888-320-4628 (toll-free)

Fax: 888-841-9041

[www.everestbiotech.com](http://www.everestbiotech.com)

**Research Use Only. Not for  
diagnostic or therapeutic use.**

## EB07728 - Goat Anti-Perilipin 1 (C Terminus) Antibody

Size: 100µg specific antibody in 200µl



### Target Protein

**Principal Names:** Plin, perilipin, PER1, lipid droplet-associated protein, PLIN1, Perilipin1, Perilipin 1

**Official Symbol:** PLIN1

**Accession Number(s):** NP\_002657.3

**Human GeneID(s):** [5346](#)

**Non-Human GeneID(s):** 25629 (rat)

### Immunogen

Peptide with sequence C-EPILGRAQYSQLRKK, from the C Terminus of the protein sequence according to NP\_002657.3.

Please note the [peptide](#) is available for sale.

### Purification and Storage

Purified from goat serum by ammonium sulphate precipitation followed by antigen affinity chromatography using the immunizing peptide.

Supplied at 0.5 mg/ml in Tris saline, 0.02% sodium azide, pH7.3 with 0.5% bovine serum albumin.

Aliquot and store at -20°C. Minimize freezing and thawing.

### Applications Tested

**Peptide ELISA:** antibody detection limit dilution 1:64000.

**Western blot:** Approx 55kDa band observed in Human Breast and Breast cancer lysates, and in lysates of cell line Jurkat (calculated MW of 56.0kDa according to NP\_002657.3). Recommended concentration: 0.5-2µg/ml. Primary incubation 1 hour at room temperature.

### Species Reactivity

**Tested:** Human

**Expected from sequence similarity:** Human, Rat, Dog

### Specific References

**This antibody (previous batch) has been successfully used in IHC on Mouse:**

Rayanne B Burl, Elizabeth Ann Rondini, Hongguang Wei, Roger Pique-Regi, James G Granneman

Deconstructing cold-induced brown adipocyte neogenesis in mice.

Elife. 2022 Jul18;11:e80167.doi:10.7554/eLife.80167.

PMID: 35848799

**This antibody (previous batch) has been successfully used in IF on Human:**

Emilio P.Mottillo, Huamei Zhang, Alexander Yang, Li Zhou, James G.Granneman

Genetically-encoded sensors to detect fatty acid production and trafficking

Molecular Metabolism, Vol 29, Nov. 2019, <https://doi.org/10.1016/j.molmet.2019.08.012>

PMID: 31668392

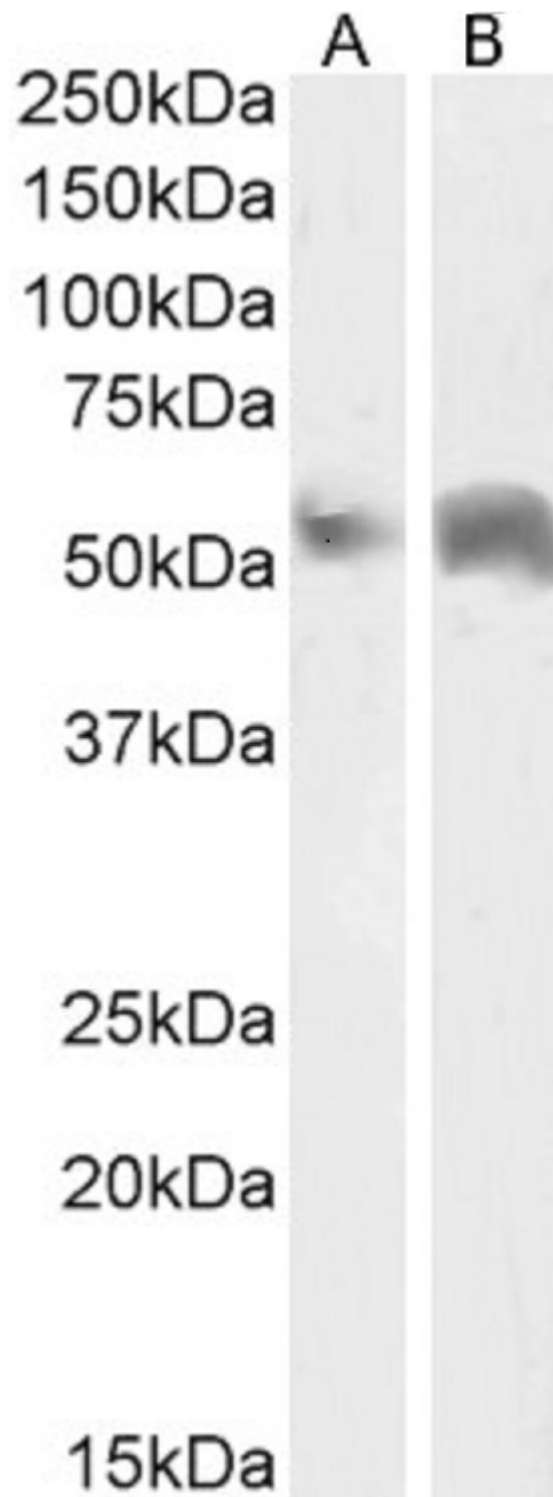
**This antibody (previous batch) has been successfully used in IHC and IF on Mouse:**

Lee YH, Petkova AP, Konkar AA, Granneman JG.

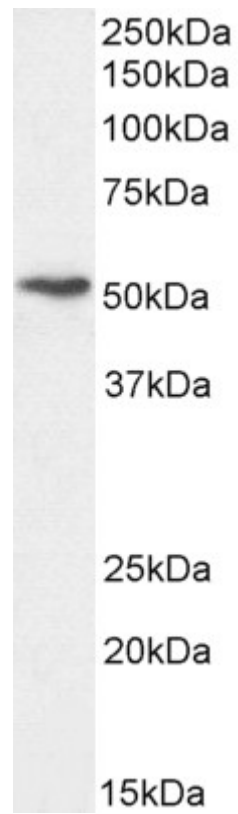
Cellular origins of cold-induced brown adipocytes in adult mice.

FASEB J. 2015 Jan;29(1):286-99.

PMID: 25392270



EB07728 (2 $\mu$ g/ml) staining of Human Breast (A) and (1 $\mu$ g/ml) Breast cancer (B) lysate (35 $\mu$ g protein in RIPA buffer). Detected by chemiluminescence.



EB07728 (1µg/ml) staining of Jurkat cell lysate (35µg protein in RIPA buffer). Detected by chemiluminescence.