



UK Office

Everest Biotech Ltd

Cherwell Innovation Centre
77 Heyford Park
Upper Heyford
Oxfordshire
OX25 5HD
UK

Enquiries:

info@everestbiotech.com

Sales:

sales@everestbiotech.com

Tech support:

support@everestbiotech.com

Tel: +44 (0)1869 238326

Fax: +44 (0)1869 238327

US Office

Everest Biotech c/o Abcore

405 Maple Street, Suite A106
Ramona,
CA 92065
USA

Inquiries:

info@everestbiotech.com

Sales:

usasales@everestbiotech.com

Tech support:

support@everestbiotech.com

Tel: 888-320-4628 (toll-free)

Fax: 888-841-9041

www.everestbiotech.com

**Research Use Only. Not for
diagnostic or therapeutic use.**

EB05003 - Goat Anti-PDE4B Antibody

Size: 100µg specific antibody in 200µl



Target Protein

Principal Names: PDE4B, phosphodiesterase 4B, cAMP-specific (phosphodiesterase E4 duncie homolog, Drosophila), DPDE4, PDEIVB, Phosphodiesterase-4B, cAMP-specific (duncie (Drosophila)-homolog, phosphodiesterase 4B, cAMP-specific (duncie (Drosophila)-homolog phosphodiesterase E4)

Official Symbol: PDE4B

Accession Number(s): NP_002591.2; NP_001032416.1; NP_001032417.1

Human GeneID(s): [5142](#)

Non-Human GeneID(s): 18578 (mouse)

Important Comments: This antibody is expected to recognize all reported isoforms (NP_002591.2; NP_001032416.1; NP_001032417.1).

Immunogen

Peptide with sequence C-IDIATEDKSPVDT, from the C Terminus of the protein sequence according to NP_002591.2; NP_001032416.1; NP_001032417.1.

Please note the [peptide](#) is available for sale.

Purification and Storage

Purified from goat serum by ammonium sulphate precipitation followed by antigen affinity chromatography using the immunizing peptide.

Supplied at 0.5 mg/ml in Tris saline, 0.02% sodium azide, pH7.3 with 0.5% bovine serum albumin.

Aliquot and store at -20°C. Minimize freezing and thawing.

Applications Tested

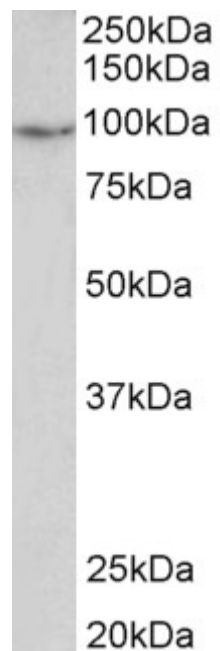
Peptide ELISA: antibody detection limit dilution 1:32000.

Western blot: Approx 98kDa band observed in Human Uterus lysates (calculated MW of 83.3kDa according to NP_002591.2). The observed molecular weight corresponds to earlier findings in literature with different antibodies (Méhats et al, Endocrinology. 1999 Jul;140(7):3228-37. PMID: 10385419). Recommended concentration: 1-3µg/ml.

Species Reactivity

Tested: Human

Expected from sequence similarity: Human, Mouse,



EB05003 2µg/ml staining of Human Uterus lysate (35µg protein in RIPA buffer). Primary incubation was 1 hour.
Detected by chemiluminescence.