



## UK Office

### Everest Biotech Ltd

Cherwell Innovation Centre  
77 Heyford Park  
Upper Heyford  
Oxfordshire  
OX25 5HD  
UK

Enquiries:

[info@everestbiotech.com](mailto:info@everestbiotech.com)

Sales:

[sales@everestbiotech.com](mailto:sales@everestbiotech.com)

Tech support:

[support@everestbiotech.com](mailto:support@everestbiotech.com)

Tel: +44 (0)1869 238326

Fax: +44 (0)1869 238327

## US Office

### Everest Biotech c/o Abcore

405 Maple Street, Suite A106  
Ramona,  
CA 92065  
USA

Inquiries:

[info@everestbiotech.com](mailto:info@everestbiotech.com)

Sales:

[usasales@everestbiotech.com](mailto:usasales@everestbiotech.com)

Tech support:

[support@everestbiotech.com](mailto:support@everestbiotech.com)

Tel: 888-320-4628 (toll-free)

Fax: 888-841-9041

[www.everestbiotech.com](http://www.everestbiotech.com)

**Research Use Only. Not for  
diagnostic or therapeutic use.**

## EB06343 - Goat Anti-PAX3 Antibody

Size: 100µg specific antibody in 200µl



### Target Protein

**Principal Names:** PAX3, WS1, CDHS, HUP2, paired box gene 3 (Waardenburg syndrome 1), paired domain gene 3, paired box homeotic gene 3 (Waardenburg syndrome 1), paired box 3, MGC120381, MGC120382, MGC120383, MGC120384, MGC134778, paired box homeotic gene 3, paired domain gene HuP2

**Official Symbol:** PAX3

**Accession Number(s):** NP\_852122.1; NP\_000429.2; NP\_039230.1; NP\_852123.1; NP\_852124.1; NP\_852126.1; NP\_852125.1; NP\_001120838.1

**Human GeneID(s):** [5077](#)

**Non-Human GeneID(s):** 18505 (mouse), 114502 (rat)

**Important Comments:** This antibody is expected to recognize all 8 reported isoforms (NP\_852122.1; NP\_000429.2; NP\_039230.1; NP\_852123.1; NP\_852124.1; NP\_852126.1; NP\_852125.1; NP\_001120838.1).

### Immunogen

Peptide with sequence TTLAGAVPRMM-C, from the N Terminus of the protein sequence according to NP\_852122.1; NP\_000429.2; NP\_039230.1; NP\_852123.1; NP\_852124.1; NP\_852126.1; NP\_852125.1; NP\_001120838.1.

Please note the [peptide](#) is available for sale.

### Purification and Storage

Purified from goat serum by ammonium sulphate precipitation followed by antigen affinity chromatography using the immunizing peptide.

Supplied at 0.5 mg/ml in Tris saline, 0.02% sodium azide, pH7.3 with 0.5% bovine serum albumin.

Aliquot and store at -20°C. Minimize freezing and thawing.

### Applications Tested

**Peptide ELISA:** antibody detection limit dilution 1:32000.

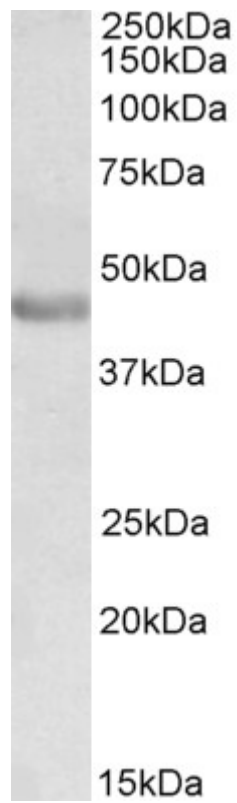
**Western blot:** Approx 45kDa band observed in lysates of Human Duodenum, Skin, and in lysates of cell lines A431 (calculated MW of 45.2kDa according to NP\_852125.1 and of 44.8kDa according to NP\_852126.1). Recommended concentration: 0.3-1µg/ml. Primary incubation was 1 hour.

**IHC:** In paraffin embedded Human Esophagus expression of PAX3 is detected in squamous epithelium. Recommended concentration: 4.5µg/ml.

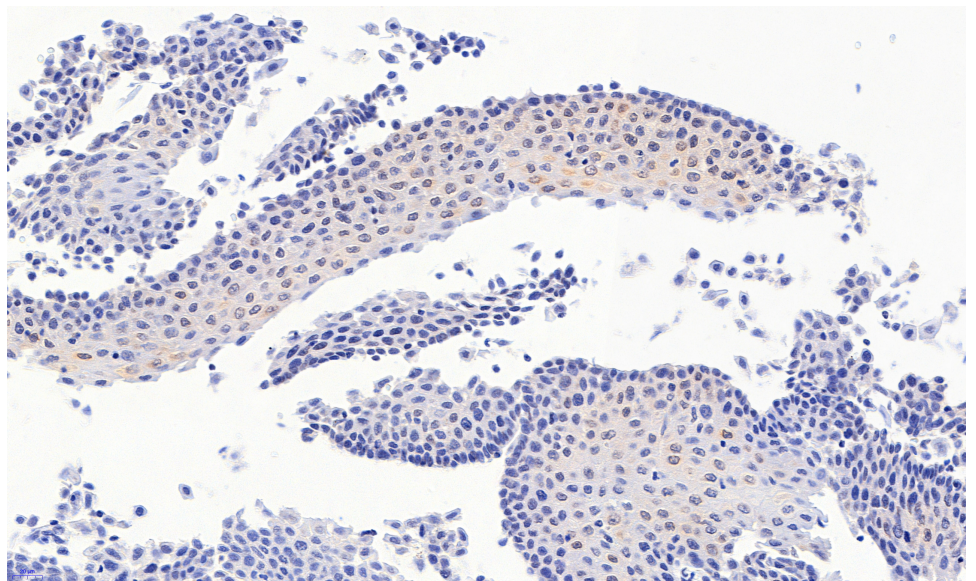
### Species Reactivity

**Tested:** Human

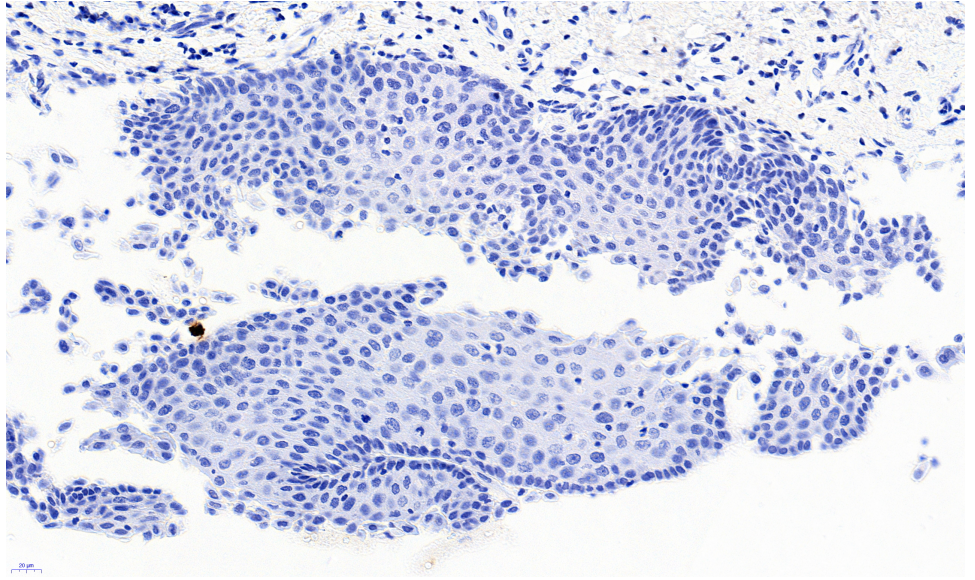
**Expected from sequence similarity:** Human, Rat, Cow



EB06343 (0.3 $\mu$ g/ml) staining of Human Duodenum lysate (35 $\mu$ g protein in RIPA buffer). Detected by chemiluminescence.



EB06343 (4.5 $\mu$ g/ml) staining of paraffin embedded Human Esophagus. Heat induced antigen retrieval with citrate buffer pH 6, HRP-staining.



EB06343 Negative Control showing staining of paraffin embedded Human Esophagus, with no primary antibody.