



## UK Office

### Everest Biotech Ltd

Cherwell Innovation Centre  
77 Heyford Park  
Upper Heyford  
Oxfordshire  
OX25 5HD  
UK

Enquiries:

[info@everestbiotech.com](mailto:info@everestbiotech.com)

Sales:

[sales@everestbiotech.com](mailto:sales@everestbiotech.com)

Tech support:

[support@everestbiotech.com](mailto:support@everestbiotech.com)

Tel: +44 (0)1869 238326

Fax: +44 (0)1869 238327

## US Office

### Everest Biotech c/o Abcore

405 Maple Street, Suite A106  
Ramona,  
CA 92065  
USA

Inquiries:

[info@everestbiotech.com](mailto:info@everestbiotech.com)

Sales:

[usasales@everestbiotech.com](mailto:usasales@everestbiotech.com)

Tech support:

[support@everestbiotech.com](mailto:support@everestbiotech.com)

Tel: 888-320-4628 (toll-free)

Fax: 888-841-9041

[www.everestbiotech.com](http://www.everestbiotech.com)

**Research Use Only. Not for  
diagnostic or therapeutic use.**

## EB05880 - Goat Anti-PARK7 / DJ-1 Antibody

Size: 100µg specific antibody in 200µl



### Target Protein

**Principal Names:** PARK7, DJ1, DJ-1, Parkinson disease (autosomal recessive, early onset) 7, oncogene DJ1, CTA-215D11.1, FLJ27376, FLJ34360, FLJ92274, Parkinson disease protein 7, protein DJ-1, epididymis secretory sperm binding protein Li 67p, HEL-S-67p

**Official Symbol:** PARK7

**Accession Number(s):** NP\_009193.2

**Human GeneID(s):** [11315](#)

**Non-Human GeneID(s):** 57320 (mouse), 117287 (rat)

**Important Comments:** Reported variants (NP\_001116849.1; NP\_009193.2) represent the same protein.

### Immunogen

Peptide with sequence C-AAQVKAPLVLKD, from the C Terminus of the protein sequence according to NP\_009193.2.

Please note the [peptide](#) is available for sale.

### Purification and Storage

Purified from goat serum by ammonium sulphate precipitation followed by antigen affinity chromatography using the immunizing peptide.

Supplied at 0.5 mg/ml in Tris saline, 0.02% sodium azide, pH7.3 with 0.5% bovine serum albumin.

Aliquot and store at -20°C. Minimize freezing and thawing.

### Applications Tested

**Peptide ELISA:** antibody detection limit dilution 1:128000.

**Western blot:** Approx 24kDa band observed in lysates of cell lines HeLa and Jurkat and of Human Brain (Cerebellum, Hippocampus, Frontal Cortex) and rodent Brain lysates (calculated MW of 19.9kDa according to NP\_001116849.1 and of NP\_009193.2).

Recommended concentration: 0.05-0.1µg/ml. Primary incubation was 1 hour.

**IHC:** Paraffin embedded Human Testis. Recommended concentration: 7µg/ml.

**Immunofluorescence:** Strong expression of the protein seen around the nucleus. Dividing cells appear to show enhanced expression. Recommended concentration: 5µg/ml.

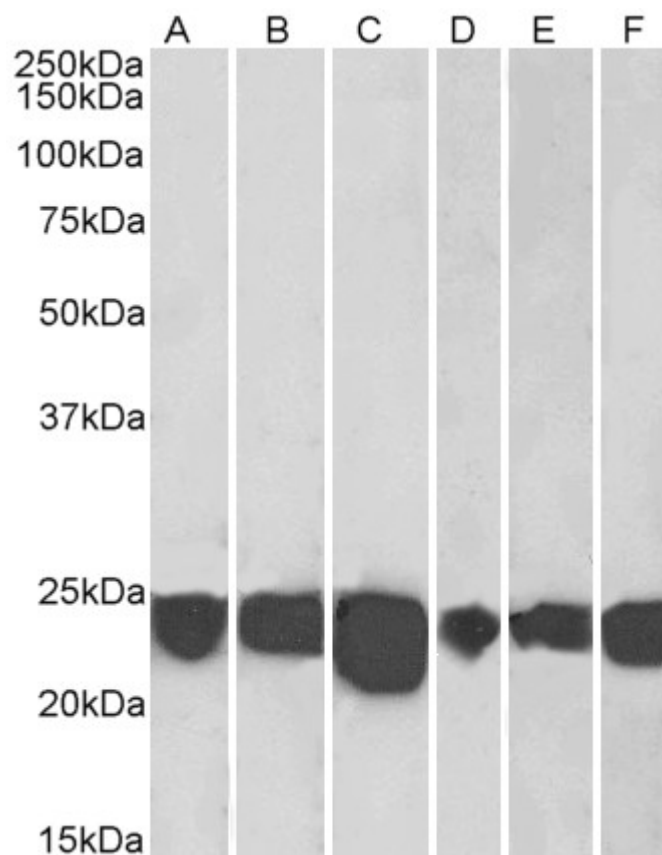
### Species Reactivity

**Tested:** Human, Mouse, Rat

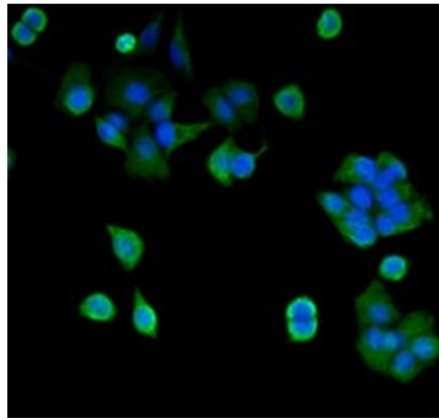
**Expected from sequence similarity:** Human, Mouse, Rat



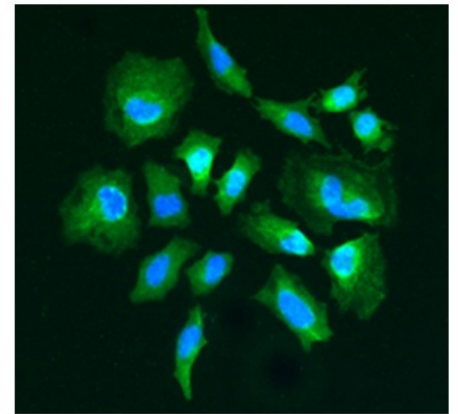
EB05880 (0.001 $\mu$ g/ml) staining of HeLa (A) and Jurkat (B) lysates (35 $\mu$ g protein in RIPA buffer). Detected by chemiluminescence.



EB05880 (0.001 $\mu$ g/ml) staining of Human Cerebellum (A), Human Frontal Cortex (B), Human Hippocampus (C) Mouse Fetal Brain (D), Mouse Brain (E) and Rat Brain (F) lysates (35 $\mu$ g protein in RIPA buffer). Detected by chemiluminescence.

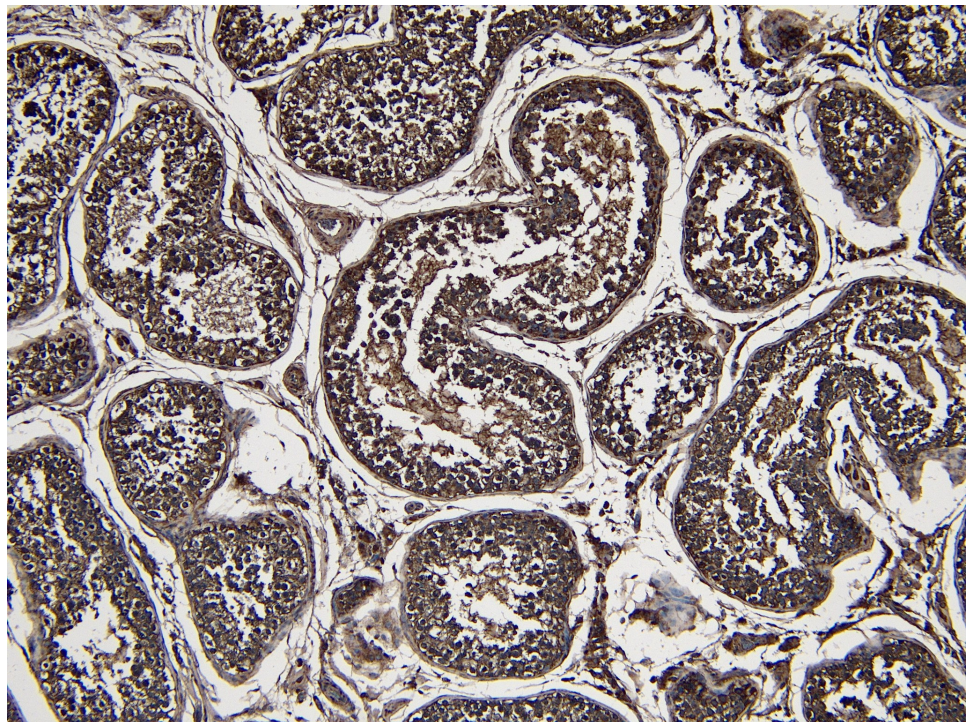


A

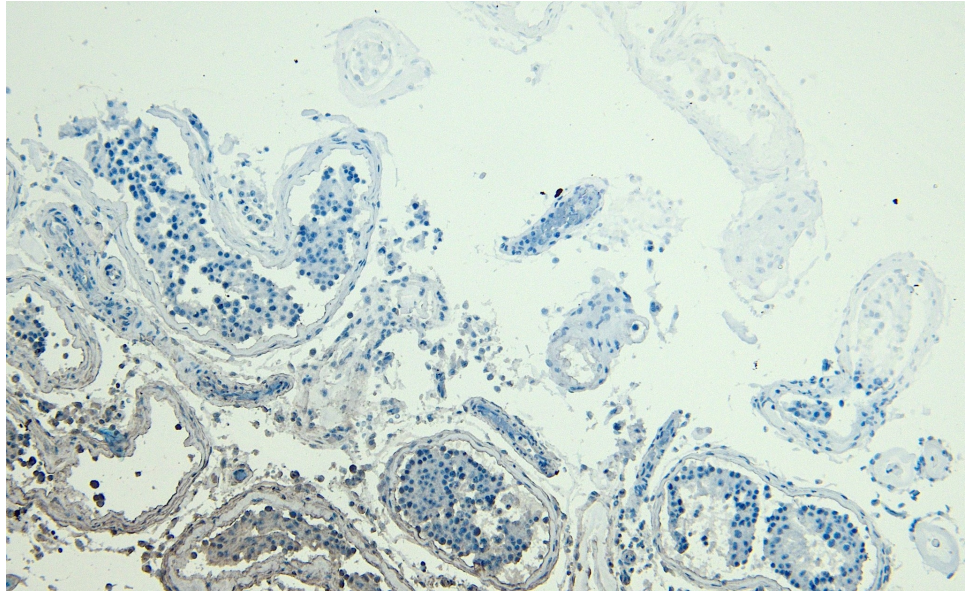


B

Immunofluorescence staining of MCF7 (A) and HeLa (B) cells with 5 $\mu$ g/ml EB05880 antibody. Detected with Rabbit anti-goat IgG-Alexafluor488 antibody at 1:1000. Nuclei Counterstained with DAPI.



EB05880 (7 $\mu$ g/ml) staining of paraffin embedded Human Testis. Heat induced antigen retrieval with citrate buffer pH 6, HRP-staining.



EB05880 Negative Control showing staining of paraffin embedded Human Testis, with no primary antibody.