



UK Office

Everest Biotech Ltd

Cherwell Innovation Centre
77 Heyford Park
Upper Heyford
Oxfordshire
OX25 5HD
UK

Enquiries:

info@everestbiotech.com

Sales:

sales@everestbiotech.com

Tech support:

support@everestbiotech.com

Tel: +44 (0)1869 238326

Fax: +44 (0)1869 238327

US Office

Everest Biotech c/o Abcore

405 Maple Street, Suite A106
Ramona,
CA 92065
USA

Inquiries:

info@everestbiotech.com

Sales:

usasales@everestbiotech.com

Tech support:

support@everestbiotech.com

Tel: 888-320-4628 (toll-free)

Fax: 888-841-9041

www.everestbiotech.com

**Research Use Only. Not for
diagnostic or therapeutic use.**

EB05370 - Goat Anti-NQO1 Antibody

Size: 100µg specific antibody in 200µl



Target Protein

Principal Names: NQO1, NAD(P)H dehydrogenase, quinone 1, DTD, QR1, DHQU, DIA4, NMOR1, NMORI, diaphorase-4, diaphorase (NADH/NADPH), diaphorase (NADH/NADPH) (cytochrome b-5 reductase), NAD(P)H:menadione oxidoreductase 1, dioxin-inducible 1, DT-diaphorase, NAD(P)H menadione oxidoreductase 1, dioxin-inducible, NAD(P)H:Quinone acceptor oxidoreductase type 1, NAD(P)H menadione oxidoreductase 1, dioxin-inducible, NAD(P)H:quinone oxidoreductase, azoreductase, diaphorase (NADH/NADPH) (cytochrome b-5 reductase), dioxin-inducible 1, menadione reductase, phyloquinone reductase, quinone reductase 1

Official Symbol: NQO1

Accession Number(s): NP_000894.1; NP_001020604.1; NP_001020605.1

Human GeneID(s): [1728](#)

Non-Human GeneID(s): 18104 (mouse)

Important Comments: This products is expected to recognize all three reported isoforms (NP_000894.1, NP_001020604.1 and NP_001020605.1).

Immunogen

Peptide with sequence C-SIPTDNQIKARK, from the C Terminus of the protein sequence according to NP_000894.1; NP_001020604.1; NP_001020605.1.

Please note the [peptide](#) is available for sale.

Purification and Storage

Purified from goat serum by ammonium sulphate precipitation followed by antigen affinity chromatography using the immunizing peptide.

Supplied at 0.5 mg/ml in Tris saline, 0.02% sodium azide, pH7.3 with 0.5% bovine serum albumin.

Aliquot and store at -20°C. Minimize freezing and thawing.

Applications Tested

Peptide ELISA: antibody detection limit dilution 1:64000.

Western blot: Approx. 30kDa band observed in lysates of cell lines U251 and HepG2 and in Human Kidney, Lung and Duodenum lysates, and approx. 30-32kDa band in Rat Kidney, Lung and Duodenum lysates (calculated MW of 30.9kDa according to Human NP_000894.1 and Rat NP_058696.2). Recommended concentration: 0.1-0.3µg/ml.

Primary incubation 1 hour at room temperature.

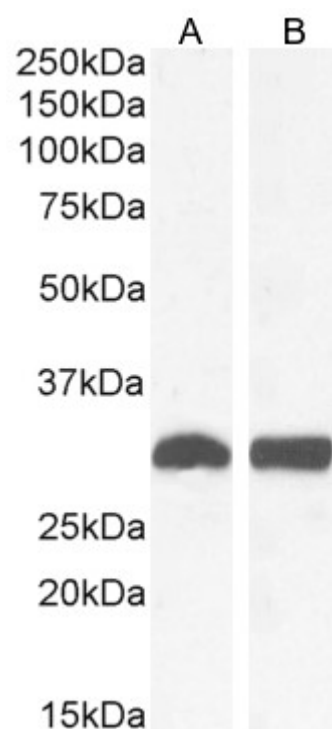
IHC: In paraffin embedded Human Kidney shows specific staining of the glomeruli. Recommended concentration: 2-4µg/ml.

Immunofluorescence: Expression of the protein seen in the cytoplasm and nucleus of HepG2 cells. Recommended concentration: 10µg/ml.

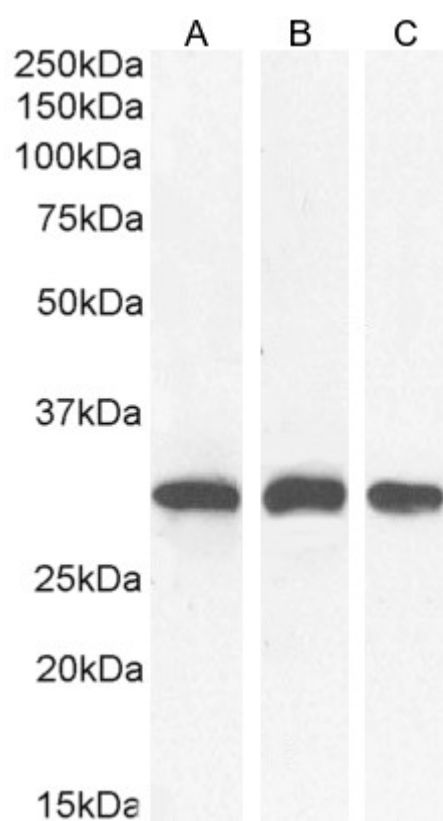
Species Reactivity

Tested: Human, Rat

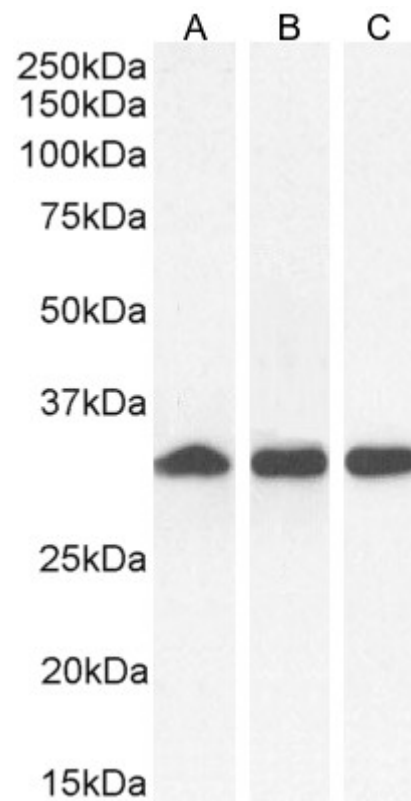
Expected from sequence similarity: Human, Rat, Dog, Pig



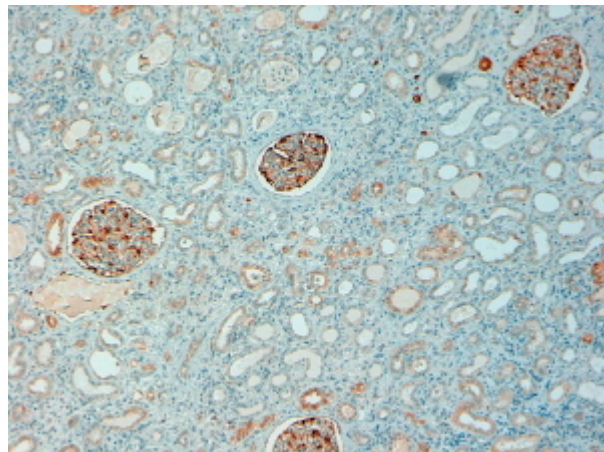
EB05370 (0.3 μ g/ml) staining of U251 (A) and HepG2 (B) cell lysate. (35 μ g protein in RIPA buffer). Detected by chemiluminescence.



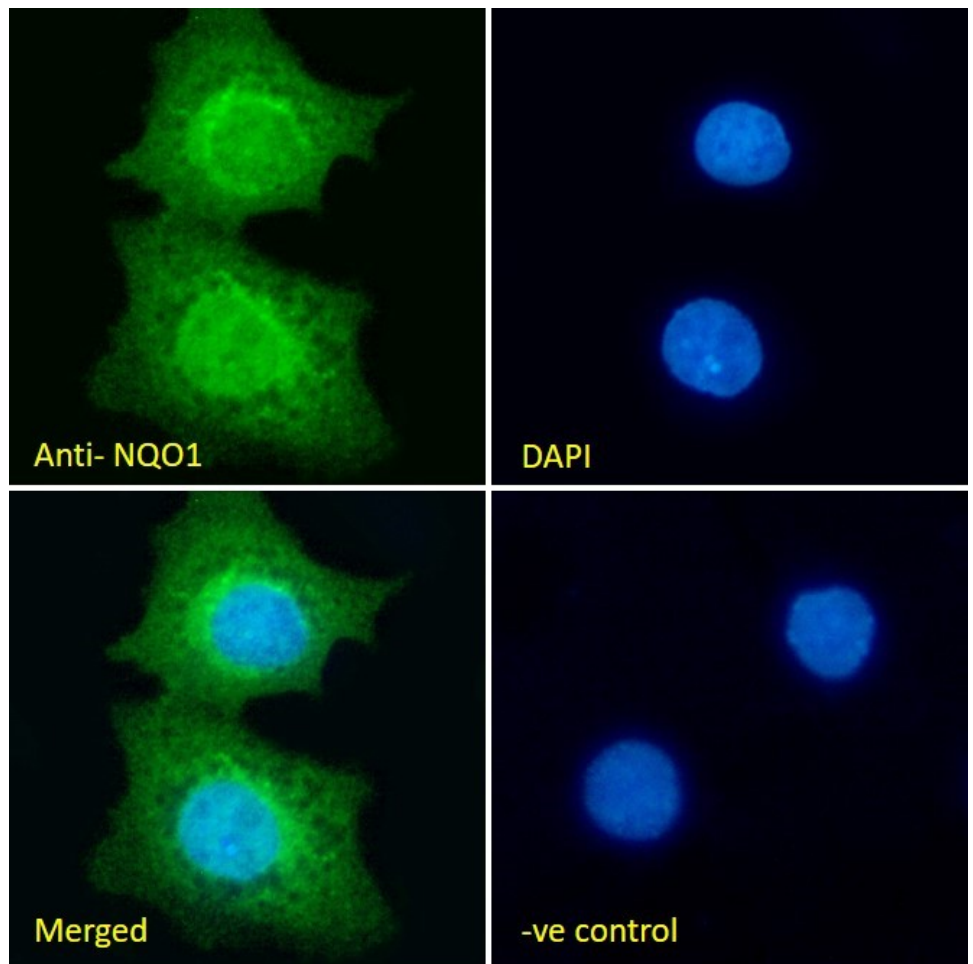
EB05370 (0.3 μ g/ml) staining of Human Kidney (A), Lung (B) and Duodenum (C) lysate. (35 μ g protein in RIPA buffer). Detected by chemiluminescence



EB05370 (0.3 μ g/ml) staining of Rat Kidney (A), Lung (B) and Duodenum (C) lysate. (35 μ g protein in RIPA buffer). Detected by chemiluminescence.



EB05370 (2 μ g/ml) staining of paraffin embedded Human Kidney. Steamed antigen retrieval with citrate buffer pH 6, AP-staining.



EB05370 Immunofluorescence analysis of paraformaldehyde fixed HepG2 cells, permeabilized with 0.15% Triton. Primary incubation 1hr (10ug/ml) followed by Alexa Fluor 488 secondary antibody (2ug/ml), showing cytoplasmic and some nuclear staining. The nuclear stain is DAPI (blue). Negative control: Unimmunized goat IgG (10ug/ml) followed by Alexa Fluor 488 secondary antibody (2ug/ml).