



## UK Office

### Everest Biotech Ltd

Cherwell Innovation Centre  
77 Heyford Park  
Upper Heyford  
Oxfordshire  
OX25 5HD  
UK

Enquiries:

[info@everestbiotech.com](mailto:info@everestbiotech.com)

Sales:

[sales@everestbiotech.com](mailto:sales@everestbiotech.com)

Tech support:

[support@everestbiotech.com](mailto:support@everestbiotech.com)

Tel: +44 (0)1869 238326

Fax: +44 (0)1869 238327

## US Office

### Everest Biotech c/o Abcore

405 Maple Street, Suite A106  
Ramona,  
CA 92065  
USA

Inquiries:

[info@everestbiotech.com](mailto:info@everestbiotech.com)

Sales:

[usasales@everestbiotech.com](mailto:usasales@everestbiotech.com)

Tech support:

[support@everestbiotech.com](mailto:support@everestbiotech.com)

Tel: 888-320-4628 (toll-free)

Fax: 888-841-9041

[www.everestbiotech.com](http://www.everestbiotech.com)

**Research Use Only. Not for  
diagnostic or therapeutic use.**

## EB06758 - Goat Anti-Nogo 66 receptor Antibody

Size: 100µg specific antibody in 200µl



### Target Protein

**Principal Names:** Nogo-66 receptor, RTN4R, reticulon 4 receptor, HGNC:1860, NGR, NOGOR, UNQ330/PRO526, nogo receptor, reticulon 4 receptor precursor, OTTHUMP00000197866

**Official Symbol:** RTN4R

**Accession Number(s):** NP\_075380.1

**Human GeneID(s):** [65078](#)

### Immunogen

Peptide with sequence C-LQALPDDTFRDLGN, from the internal region of the protein sequence according to NP\_075380.1.

Please note the [peptide](#) is available for sale.

### Purification and Storage

Purified from goat serum by ammonium sulphate precipitation followed by antigen affinity chromatography using the immunizing peptide.

Supplied at 0.5 mg/ml in Tris saline, 0.02% sodium azide, pH7.3 with 0.5% bovine serum albumin.

Aliquot and store at -20°C. Minimize freezing and thawing.

### Applications Tested

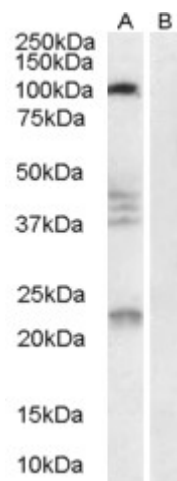
**Peptide ELISA:** antibody detection limit dilution 1:16000.

**Western blot:** Experiments gave bands at approx 90-100kDa and 37+40+45kDa in Human brain lysate after 0.3µg/ml antibody staining. These bands were successfully blocked by the immunizing peptide and they correspond to earlier findings in the literature with different antibodies (Wang et al, J Neurosci. 2002 Jul 1;22(13):5505-15). This protein has a calculated MW of 50.7kDa according to NP\_075380.1. Recommended concentration: 0.3-1µg/ml.

### Species Reactivity

**Tested:** Human

**Expected from sequence similarity:** Human, Mouse, Rat, Pig, Dog



EB06758 (0.3µg/ml) staining of Human Brain lysate (35µg protein in RIPA buffer) with (B) and without (A) blocking with the immunising peptide. Primary incubation was 1 hour. Detected by chemiluminescence.