



## UK Office

### Everest Biotech Ltd

Cherwell Innovation Centre  
77 Heyford Park  
Upper Heyford  
Oxfordshire  
OX25 5HD  
UK

Enquiries:

[info@everestbiotech.com](mailto:info@everestbiotech.com)

Sales:

[sales@everestbiotech.com](mailto:sales@everestbiotech.com)

Tech support:

[support@everestbiotech.com](mailto:support@everestbiotech.com)

Tel: +44 (0)1869 238326

Fax: +44 (0)1869 238327

## US Office

### Everest Biotech c/o Abcore

405 Maple Street, Suite A106  
Ramona,  
CA 92065  
USA

Inquiries:

[info@everestbiotech.com](mailto:info@everestbiotech.com)

Sales:

[usasales@everestbiotech.com](mailto:usasales@everestbiotech.com)

Tech support:

[support@everestbiotech.com](mailto:support@everestbiotech.com)

Tel: 888-320-4628 (toll-free)

Fax: 888-841-9041

[www.everestbiotech.com](http://www.everestbiotech.com)

**Research Use Only. Not for  
diagnostic or therapeutic use.**

## EB07341 - Goat Anti-NMDA receptor 1 / GRIN1 Antibody

Size: 100µg specific antibody in 200µl



### Target Protein

**Principal Names:** GRIN1, NMDA receptor 1, glutamate receptor, ionotropic, N-methyl D-aspartate 1, NMDA1, NMDAR1, NR1, N-methyl-D-aspartate receptor channel, subunit zeta-1, glutamate [NMDA] receptor subunit zeta 1

**Official Symbol:** GRIN1

**Accession Number(s):** NP\_000823.4; NP\_067544.1; NP\_015566.1

**Human GeneID(s):** [2902](#)

**Non-Human GeneID(s):** 14810 (mouse), 24408 (rat)

**Important Comments:** This antibody is expected to recognise all three reported isoforms (NP\_000823.4; NP\_067544.1; NP\_015566.1).

### Immunogen

Peptide with sequence C-TQERVNNSNKKE, from the internal region of the protein sequence according to NP\_000823.4; NP\_067544.1; NP\_015566.1.

Please note the [peptide](#) is available for sale.

### Purification and Storage

Purified from goat serum by ammonium sulphate precipitation followed by antigen affinity chromatography using the immunizing peptide.

Supplied at 0.5 mg/ml in Tris saline, 0.02% sodium azide, pH7.3 with 0.5% bovine serum albumin.

Aliquot and store at -20°C. Minimize freezing and thawing.

### Applications Tested

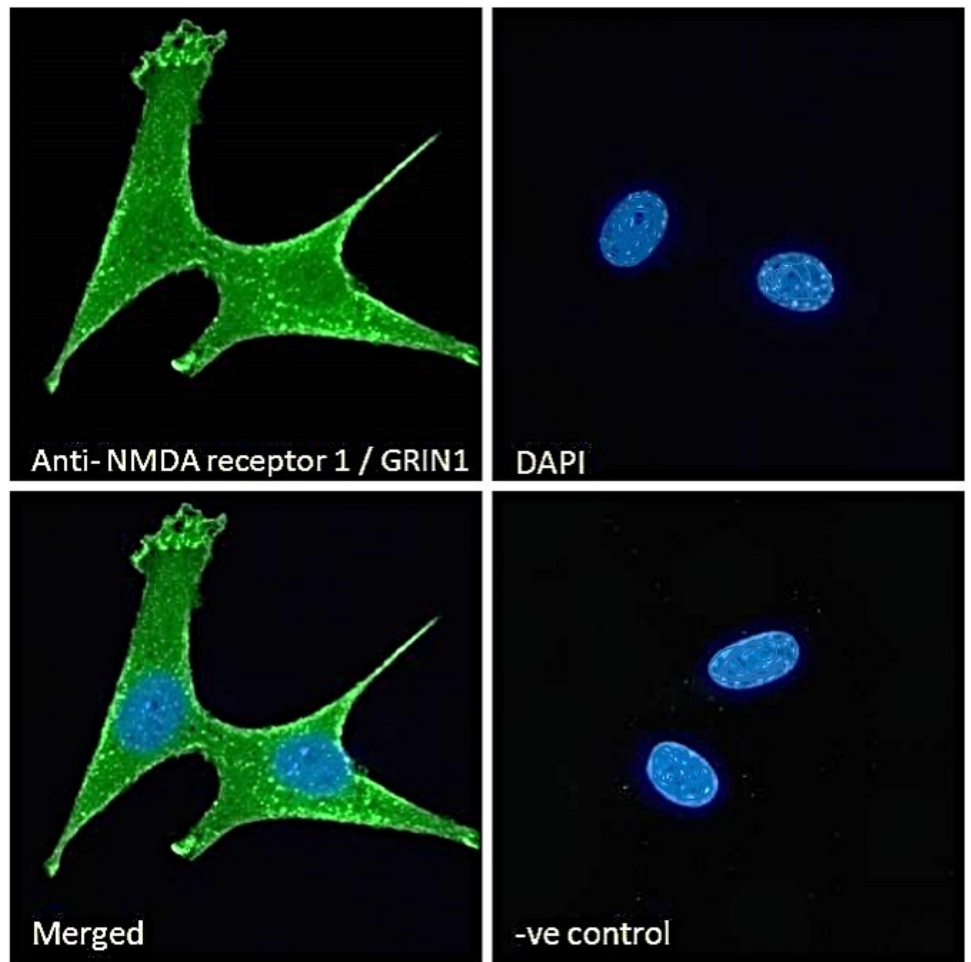
**Peptide ELISA:** antibody detection limit dilution 1:32000.

**Immunofluorescence:** Strong expression of the protein seen in the membrane and cytoplasm of MCF7 and NIH3T3 cells. Recommended concentration: 10µg/ml.

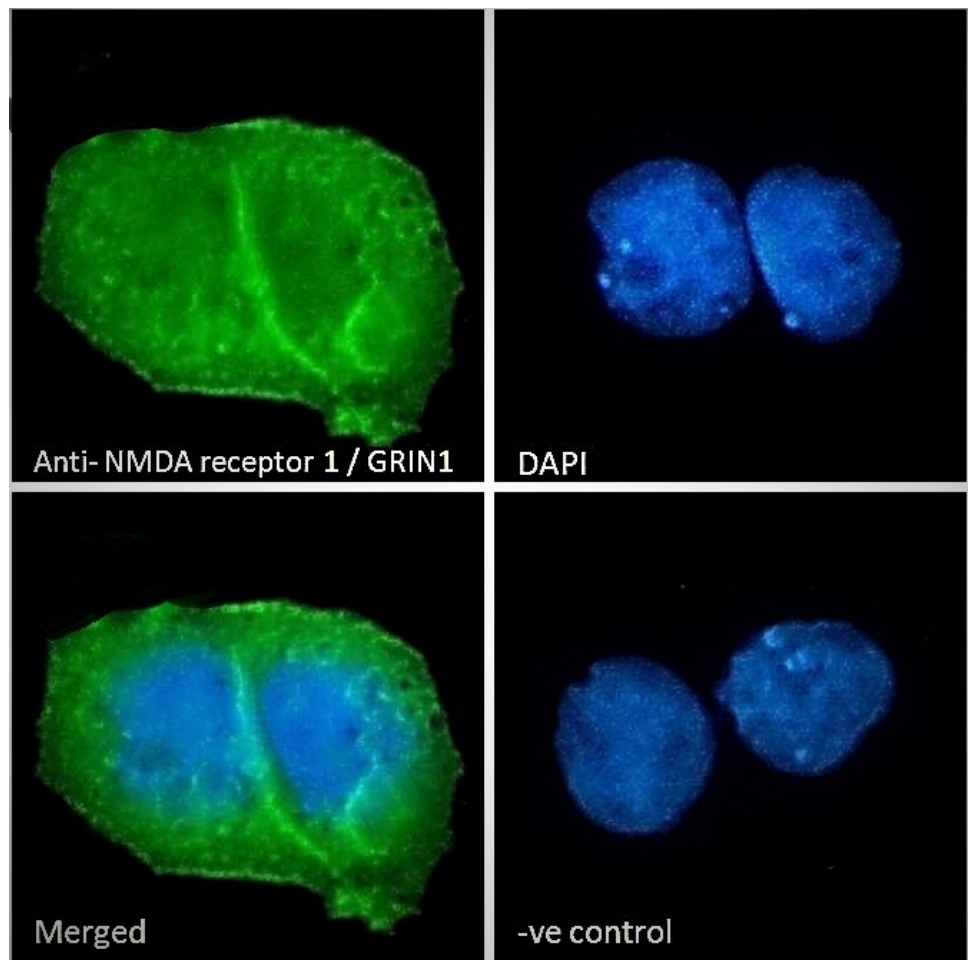
### Species Reactivity

**Tested:** Human, Mouse

**Expected from sequence similarity:** Human, Mouse, Rat, Dog



EB07341 Immunofluorescence analysis of paraformaldehyde fixed NIH3T3 cells, permeabilized with 0.15% Triton. Primary incubation 1hr (10ug/ml) followed by Alexa Fluor 488 secondary antibody (2ug/ml), showing plasma membrane and cytoplasmic staining. The nuclear stain is DAPI (blue). Negative control: Unimmunized goat IgG (10ug/ml) followed by Alexa Fluor 488 secondary antibody (2ug/ml).



EB07341 Immunofluorescence analysis of paraformaldehyde fixed MCF7 cells, permeabilized with 0.15% Triton. Primary incubation 1hr (10ug/ml) followed by Alexa Fluor 488 secondary antibody (2ug/ml), showing plasma membrane and cytoplasmic staining. The nuclear stain is DAPI (blue). Negative control: Unimmunized goat IgG (10ug/ml) followed by Alexa Fluor 488 secondary antibody (2ug/ml).