



UK Office

Everest Biotech Ltd

Cherwell Innovation Centre
77 Heyford Park
Upper Heyford
Oxfordshire
OX25 5HD
UK

Enquiries:

info@everestbiotech.com

Sales:

sales@everestbiotech.com

Tech support:

support@everestbiotech.com

Tel: +44 (0)1869 238326

Fax: +44 (0)1869 238327

US Office

Everest Biotech c/o Abcore

405 Maple Street, Suite A106
Ramona,
CA 92065
USA

Inquiries:

info@everestbiotech.com

Sales:

usasales@everestbiotech.com

Tech support:

support@everestbiotech.com

Tel: 888-320-4628 (toll-free)

Fax: 888-841-9041

www.everestbiotech.com

**Research Use Only. Not for
diagnostic or therapeutic use.**

EB07007 - Goat Anti-Netrin 1 Antibody

Size: 100µg specific antibody in 200µl



Target Protein

Principal Names: netrin 1, HGNC:8029, NTN1, NTN1L, Netrin-1, netrin 1, mouse, homolog of

Official Symbol: NTN1

Accession Number(s): NP_004813.2

Human GeneID(s): [9423](#)

Non-Human GeneID(s): 18208 (mouse), 114523 (rat)

Immunogen

Peptide with sequence KFQQREKKGKCKKA, from the C Terminus of the protein sequence according to NP_004813.2.

Please note the [peptide](#) is available for sale.

Purification and Storage

Purified from goat serum by ammonium sulphate precipitation followed by antigen affinity chromatography using the immunizing peptide.

Supplied at 0.5 mg/ml in Tris saline, 0.02% sodium azide, pH7.3 with 0.5% bovine serum albumin.

Aliquot and store at -20°C. Minimize freezing and thawing.

Applications Tested

Peptide ELISA: antibody detection limit dilution 1:32000.

Immunofluorescence: Strong expression of the protein seen in the membrane and cytoplasm of U2OS cells. Recommended concentration: 10µg/ml.

Species Reactivity

Tested: Human

Expected from sequence similarity: Human, Mouse, Rat, Dog, Cow

Specific References

This antibody (previous batch) has been successfully used in Western blot on Human:

Jayakumar C, Nauta FL, Bakker SJ, Bilo H, Gansevoort RT, Johnson MH, Ramesh G. Netrin-1, a urinary proximal tubular injury marker, is elevated early in the time course of human diabetes.

J Nephrol. 2014 Apr;27(2):151-7.

PMID: 24510764

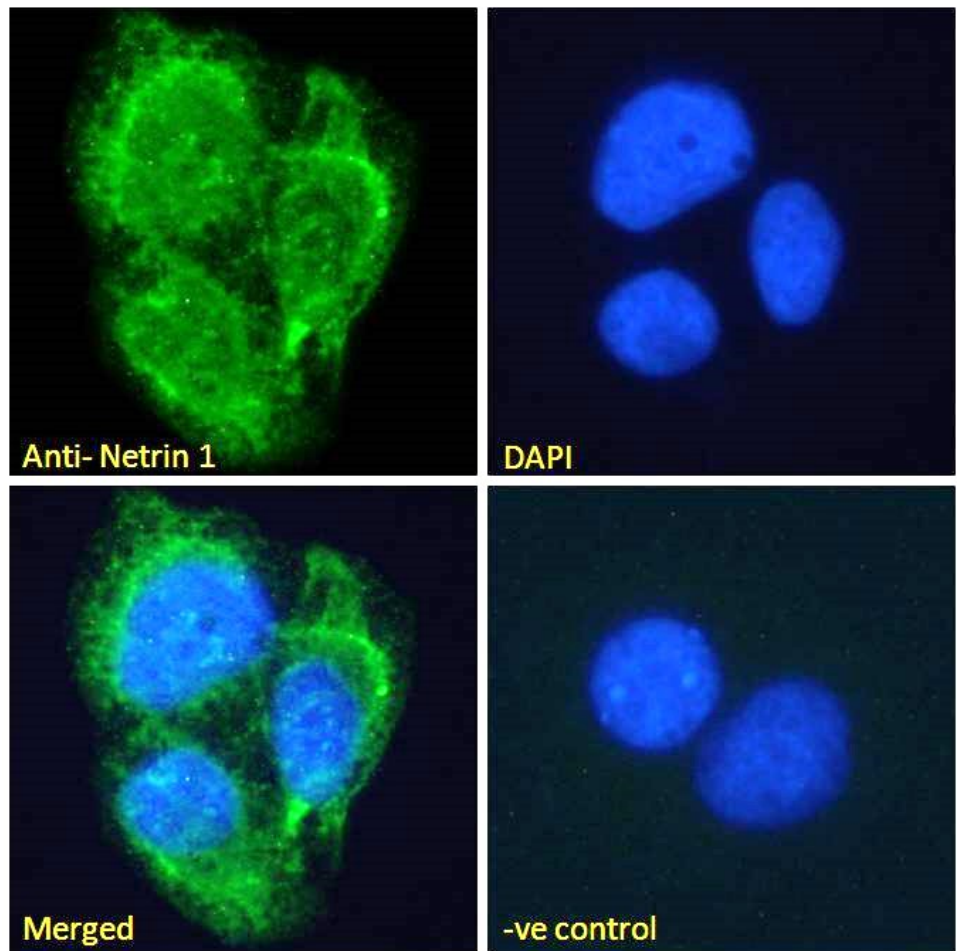
This antibody (previous batch) has been successfully used in Western blot on Human and Mouse:

White JJ, Mohamed R, Jayakumar C, Ramesh G.

Tubular injury marker netrin-1 is elevated early in experimental diabetes.

J Nephrol. 2013 Nov-Dec;26(6):1055-64.

PMID: 24052471



EB07007 Immunofluorescence analysis of paraformaldehyde fixed U2OS cells, permeabilized with 0.15% Triton. Primary incubation 1hr (10ug/ml) followed by Alexa Fluor 488 secondary antibody (2ug/ml), showing membrane and secreted staining. The nuclear stain is DAPI (blue). Negative control: Unimmunized goat IgG (10ug/ml) followed by Alexa Fluor 488 secondary antibody (2ug/ml).