



## UK Office

### Everest Biotech Ltd

Cherwell Innovation Centre  
77 Heyford Park  
Upper Heyford  
Oxfordshire  
OX25 5HD  
UK

Enquiries:

[info@everestbiotech.com](mailto:info@everestbiotech.com)

Sales:

[sales@everestbiotech.com](mailto:sales@everestbiotech.com)

Tech support:

[support@everestbiotech.com](mailto:support@everestbiotech.com)

Tel: +44 (0)1869 238326

Fax: +44 (0)1869 238327

## US Office

### Everest Biotech c/o Abcore

405 Maple Street, Suite A106  
Ramona,  
CA 92065  
USA

Inquiries:

[info@everestbiotech.com](mailto:info@everestbiotech.com)

Sales:

[usasales@everestbiotech.com](mailto:usasales@everestbiotech.com)

Tech support:

[support@everestbiotech.com](mailto:support@everestbiotech.com)

Tel: 888-320-4628 (toll-free)

Fax: 888-841-9041

[www.everestbiotech.com](http://www.everestbiotech.com)

**Research Use Only. Not for  
diagnostic or therapeutic use.**

## EB08489 - Goat Anti-MTHFD1 Antibody

Size: 100µg specific antibody in 200µl



### Target Protein

**Principal Names:** MTHFD1, methylenetetrahydrofolate dehydrogenase (NADP+ dependent) 1, methenyltetrahydrofolate cyclohydrolase, formyltetrahydrofolate synthetase, MTHFC, MTHFD, 5,10-methylenetetrahydrofolate dehydrogenase, 5,10-methylenetetrahydrofolate cyclohydrolase, 10-formyltetrahydrofolate synthetase, C1-THF synthase, NADP-dependent cyclohydrolase/formyltetrahydrofolate synthetase, cytoplasmic C-1-tetrahydrofolate synthase, methylenetetrahydrofolate dehydrogenase (NADP+ dependent), methenyltetrahydrofolate cyclohydrolase, formyltetrahydrofolate synthetase, methylenetetrahydrofolate dehydrogenase 1

**Official Symbol:** MTHFD1

**Accession Number(s):** NP\_005947.2; NP\_001351766.1

**Human GeneID(s):** [4522](#)

**Non-Human GeneID(s):** 108156 (mouse), 64300 (rat)

### Immunogen

Peptide with sequence RGDLNDCFIPCTPK, from the internal region of the protein sequence according to NP\_005947.2; NP\_001351766.1.

Please note the [peptide](#) is available for sale.

### Purification and Storage

Purified from goat serum by ammonium sulphate precipitation followed by antigen affinity chromatography using the immunizing peptide.

Supplied at 0.5 mg/ml in Tris saline, 0.02% sodium azide, pH7.3 with 0.5% bovine serum albumin.

Aliquot and store at -20°C. Minimize freezing and thawing.

### Applications Tested

**Peptide ELISA:** antibody detection limit dilution 1:32000.

**Western blot:** Approx. 100kDa band observed in lysates of cell lines Jurkat and MOLT4 and approx.110kDa in lysates of cell line MCF7 (calculated MW of 102kDa according to NP\_005947.2). Recommended concentration: 1-3µg/ml. Primary incubation 1 hour at room temperature.

**IHC:** Paraffin embedded Human Liver. Recommended concentration: 3.75µg/ml.

**Immunofluorescence:** Strong expression of the protein seen in the cytoplasm of MCF7 cells. Recommended concentration: 10µg/ml.

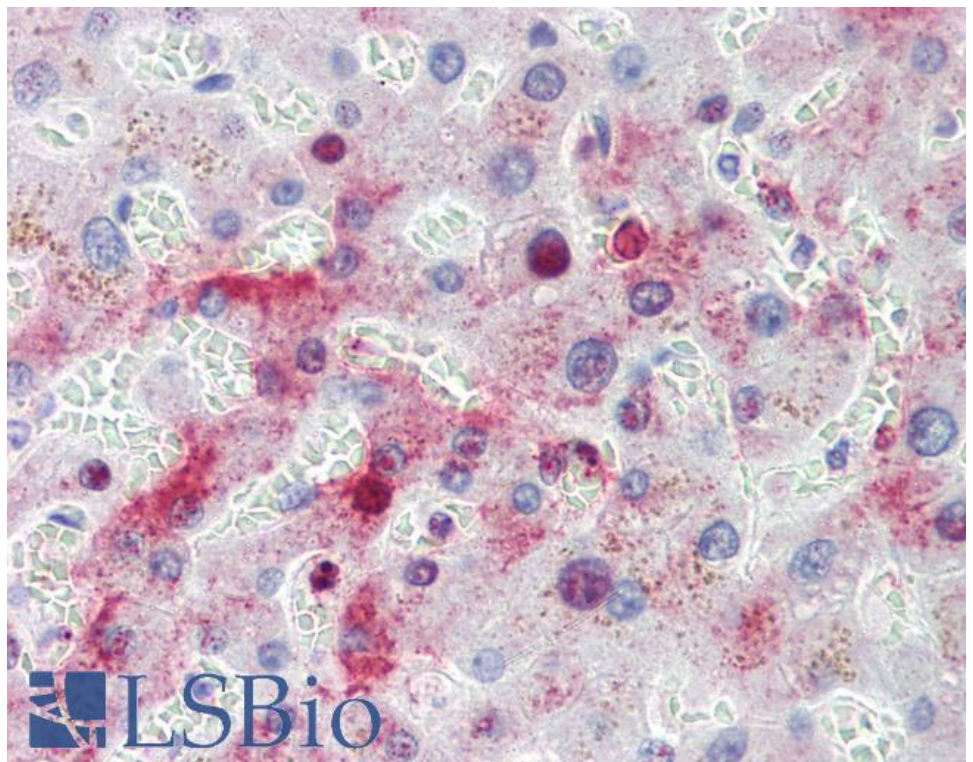
### Species Reactivity

**Tested:** Human

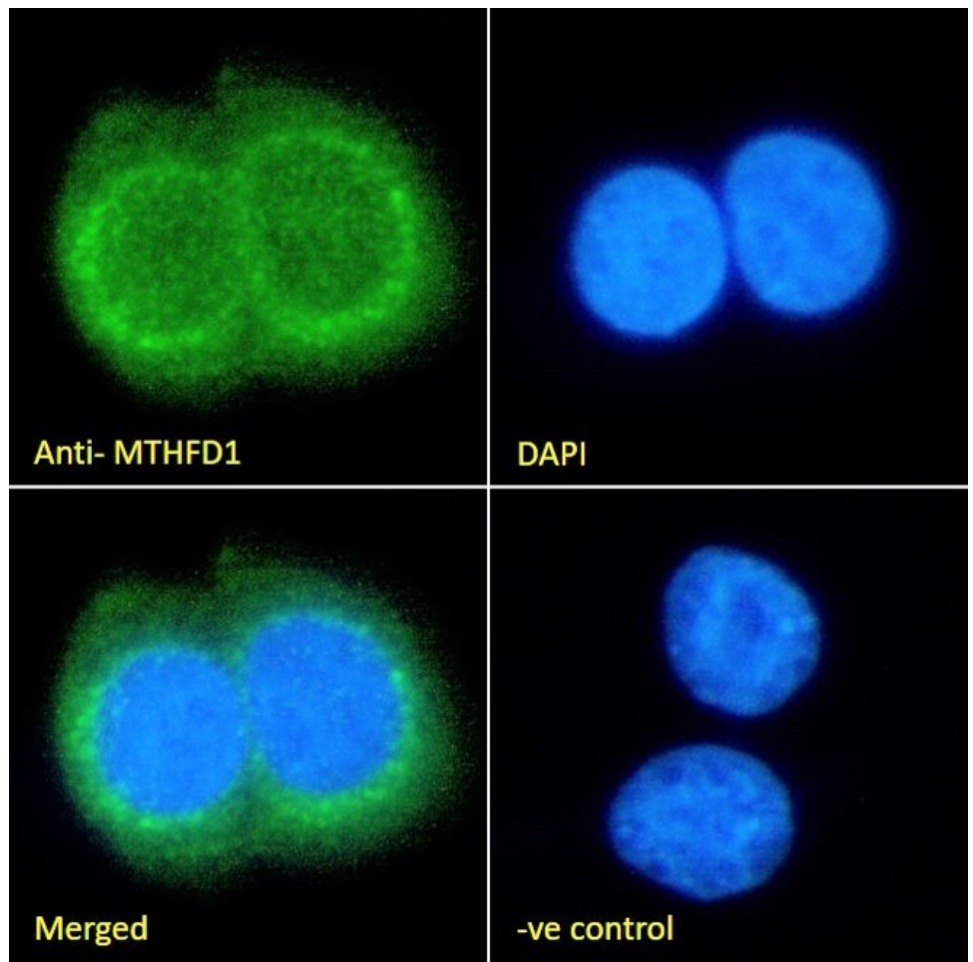
**Expected from sequence similarity:** Human, Mouse, Rat



EB08489 (1µg/ml) staining of Jurkat (A), MCF7 (B) and (2ug/ml) MOLT4 (C) cel lysate (35µg protein in RIPA buffer). Detected by chemiluminescence.



EB08489 (3.75µg/ml) staining of paraffin embedded Human Liver. Steamed antigen retrieval with citrate buffer pH 6, AP-staining.



EB08489 Immunofluorescence analysis of paraformaldehyde fixed MCF7 cells, permeabilized with 0.15% Triton. Primary incubation 1hr (10ug/ml) followed by Alexa Fluor 488 secondary antibody (2ug/ml), showing and cytoplasmic staining. The nuclear stain is DAPI (blue). Negative control: Unimmunized goat IgG (10ug/ml) followed by Alexa Fluor 488 secondary antibody (2ug/ml).