



UK Office

Everest Biotech Ltd

Cherwell Innovation Centre
77 Heyford Park
Upper Heyford
Oxfordshire
OX25 5HD
UK

Enquiries:

info@everestbiotech.com

Sales:

sales@everestbiotech.com

Tech support:

support@everestbiotech.com

Tel: +44 (0)1869 238326

Fax: +44 (0)1869 238327

US Office

Everest Biotech c/o Abcore

405 Maple Street, Suite A106
Ramona,
CA 92065
USA

Inquiries:

info@everestbiotech.com

Sales:

usasales@everestbiotech.com

Tech support:

support@everestbiotech.com

Tel: 888-320-4628 (toll-free)

Fax: 888-841-9041

www.everestbiotech.com

**Research Use Only. Not for
diagnostic or therapeutic use.**

EB10971 - Goat Anti-MNSOD (isoform A) Antibody

Size: 100µg specific antibody in 200µl



Target Protein

Principal Names: SOD2, superoxide dismutase 2, mitochondrial, RP1-56L9.2, IPOB, MNSOD, MVCD6, Mn superoxide dismutase, indophenoloxidase B, manganese-containing superoxide dismutase, superoxide dismutase [Mn], mitochondrial

Official Symbol: SOD2

Accession Number(s): NP_000627.2

Human GeneID(s): [6648](#)

Important Comments: This antibody is expected to recognize isoform A (NP_000627.2) only. Reported variants represent identical protein: NP_000627.2; NP_001019636.1.

Immunogen

Peptide with sequence C-DVTAQIALQPALKFN, from the internal region of the protein sequence according to NP_000627.2.

Please note the [peptide](#) is available for sale.

Purification and Storage

Purified from goat serum by ammonium sulphate precipitation followed by antigen affinity chromatography using the immunizing peptide.

Supplied at 0.5 mg/ml in Tris saline, 0.02% sodium azide, pH7.3 with 0.5% bovine serum albumin.

Aliquot and store at -20°C. Minimize freezing and thawing.

Applications Tested

Peptide ELISA: antibody detection limit dilution 1:32000.

Western blot: Approx 23kDa band observed in Human Brain (Cerebellum, Cerebral Cortex) and HeLa lysates (calculated MW of 24.8kDa according to NP_000627.2).

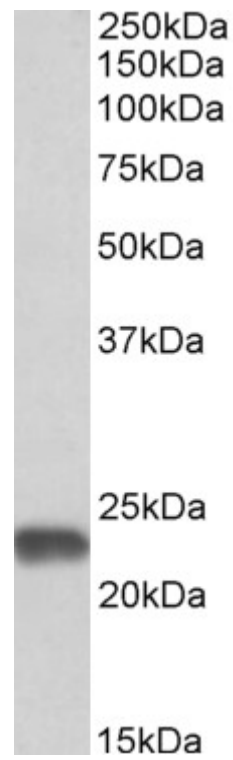
Recommended concentration: 0.01-0.03µg/ml. Primary incubation was 1 hour.

IHC: Paraffin embedded Human Cortex. Recommended concentration: 5µg/ml.

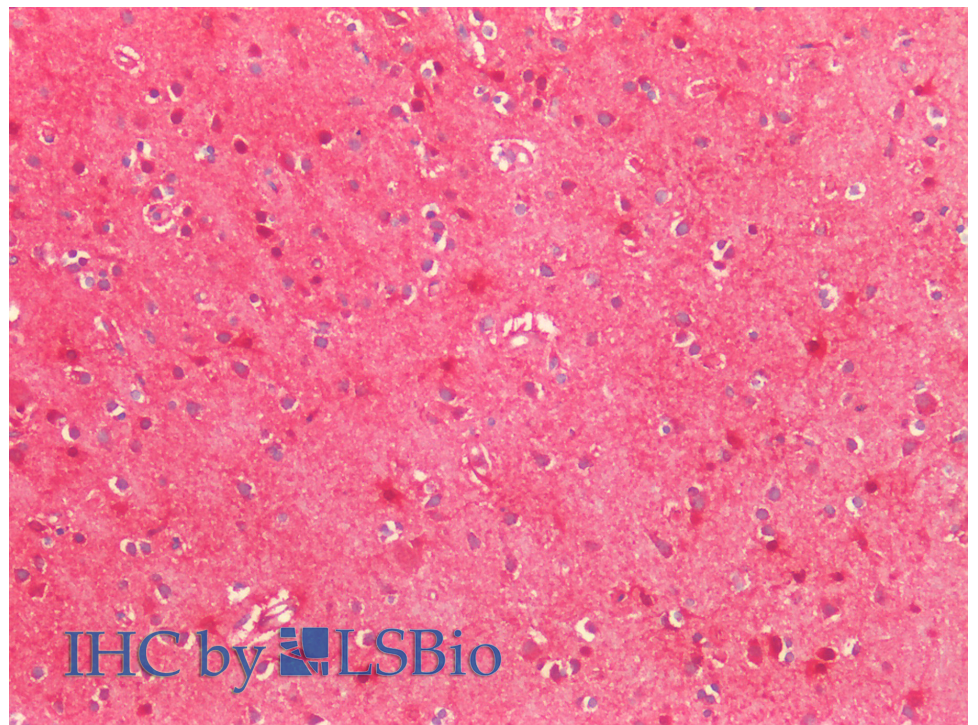
Species Reactivity

Tested: Human

Expected from sequence similarity: Human, Pig, Cow



EB10971 (0.01µg/ml) staining of Human Cerebellum lysate (35µg protein in RIPA buffer). Detected by chemiluminescence.



EB10971 (5µg/ml) staining of paraffin embedded Human Cortex. Steamed antigen retrieval with citrate buffer pH 6, AP-staining.