



UK Office

Everest Biotech Ltd

Cherwell Innovation Centre
77 Heyford Park
Upper Heyford
Oxfordshire
OX25 5HD
UK

Enquiries:

info@everestbiotech.com

Sales:

sales@everestbiotech.com

Tech support:

support@everestbiotech.com

Tel: +44 (0)1869 238326

Fax: +44 (0)1869 238327

US Office

Everest Biotech c/o Abcore

405 Maple Street, Suite A106
Ramona,
CA 92065
USA

Inquiries:

info@everestbiotech.com

Sales:

usasales@everestbiotech.com

Tech support:

support@everestbiotech.com

Tel: 888-320-4628 (toll-free)

Fax: 888-841-9041

www.everestbiotech.com

**Research Use Only. Not for
diagnostic or therapeutic use.**

EB12862 - Goat Anti-IFITM3 Antibody

Size: 100µg specific antibody in 200µl



Target Protein

Principal Names: IFITM3, interferon induced transmembrane protein 3, 1-8U, DSPA2b, IP15, dispanin subfamily A member 2b, interferon-induced transmembrane protein 3, interferon-inducible protein 1-8U

Official Symbol: IFITM3

Accession Number(s): NP_066362.2

Human GeneID(s): [10410](#)

Important Comments: The immunizing peptide only differs by one residue from IFITM2 and therefore cross-reactivation of this antibody is to be expected.

Immunogen

Peptide with sequence C-HNPAPPTSTVIHRS, from the internal region of the protein sequence according to NP_066362.2.

Please note the [peptide](#) is available for sale.

Purification and Storage

Purified from goat serum by ammonium sulphate precipitation followed by antigen affinity chromatography using the immunizing peptide.

Supplied at 0.5 mg/ml in Tris saline, 0.02% sodium azide, pH7.3 with 0.5% bovine serum albumin.

Aliquot and store at -20°C. Minimize freezing and thawing.

Applications Tested

Peptide ELISA: antibody detection limit dilution 1:64000.

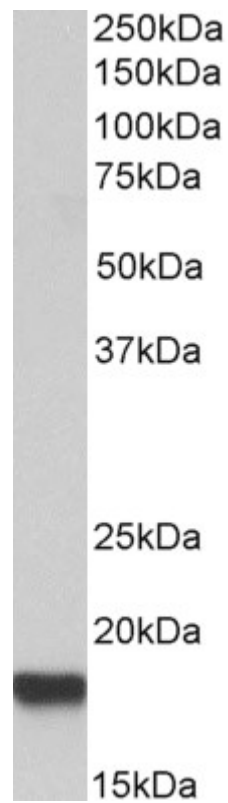
Western blot: Approx 17kDa band observed in lysates of cell line HeLa (calculated MW of 14.6kDa according to NP_066362.2). The observed molecular weight corresponds to the lipidated form. Recommended concentration: 0.3-1µg/ml. Primary incubation was 1 hour.

IHC: Paraffin embedded Human Kidney and Spleen. Recommended concentration: 2.5µg/ml.

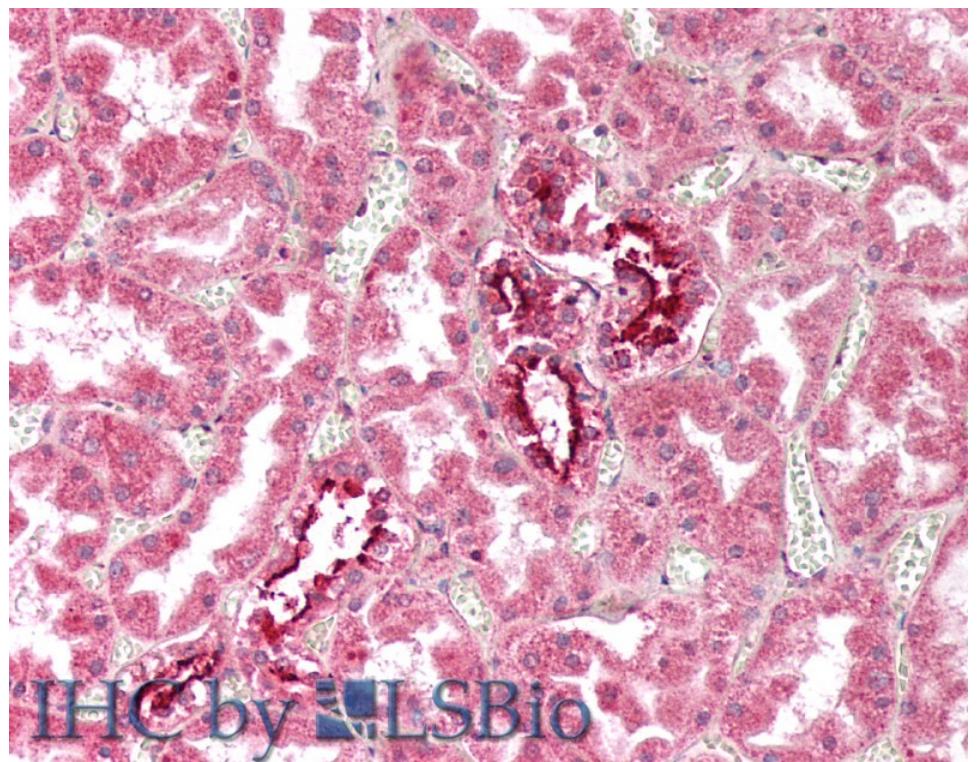
Species Reactivity

Tested: Human

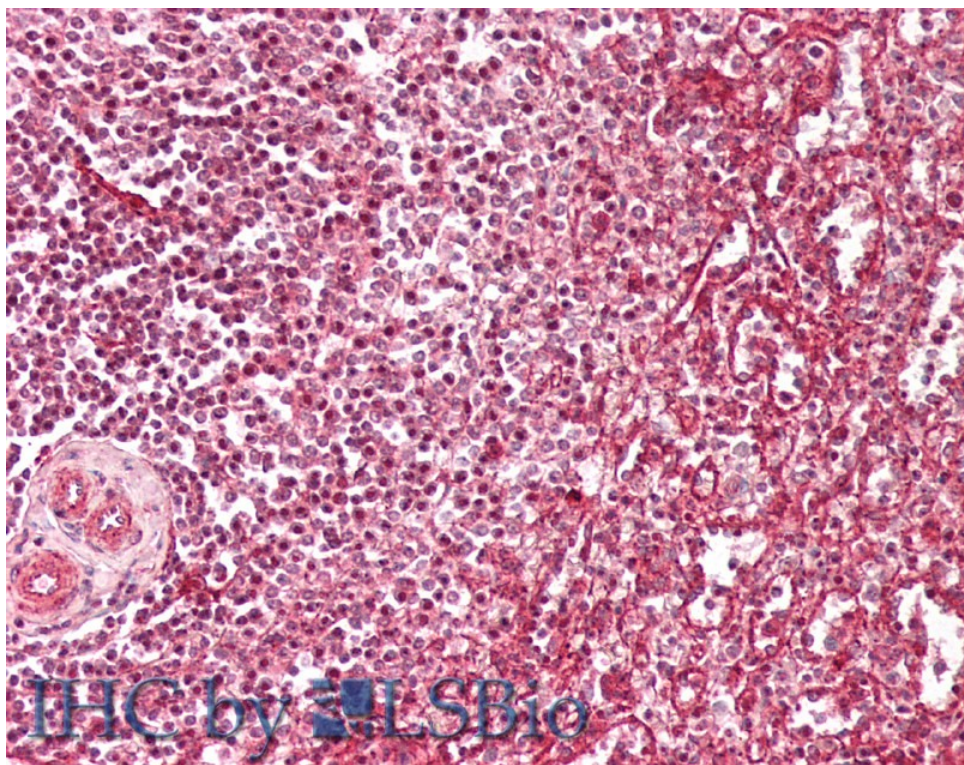
Expected from sequence similarity: Human



EB12862 (0.5µg/ml) staining of HeLa lysate (35µg protein in RIPA buffer). Detected by chemiluminescence.



EB12862 (2.5µg/ml) staining of paraffin embedded Human Kidney. Steamed antigen retrieval with citrate buffer pH 6, AP-staining.



EB12862 (2.5µg/ml) staining of paraffin embedded Human Spleen. Steamed antigen retrieval with citrate buffer pH 6, AP-staining.