



## UK Office

### Everest Biotech Ltd

Cherwell Innovation Centre  
77 Heyford Park  
Upper Heyford  
Oxfordshire  
OX25 5HD  
UK

Enquiries:

[info@everestbiotech.com](mailto:info@everestbiotech.com)

Sales:

[sales@everestbiotech.com](mailto:sales@everestbiotech.com)

Tech support:

[support@everestbiotech.com](mailto:support@everestbiotech.com)

Tel: +44 (0)1869 238326

Fax: +44 (0)1869 238327

## US Office

### Everest Biotech c/o Abcore

405 Maple Street, Suite A106  
Ramona,  
CA 92065  
USA

Inquiries:

[info@everestbiotech.com](mailto:info@everestbiotech.com)

Sales:

[usasales@everestbiotech.com](mailto:usasales@everestbiotech.com)

Tech support:

[support@everestbiotech.com](mailto:support@everestbiotech.com)

Tel: 888-320-4628 (toll-free)

Fax: 888-841-9041

[www.everestbiotech.com](http://www.everestbiotech.com)

**Research Use Only. Not for  
diagnostic or therapeutic use.**

## EB06926 - Goat Anti-GOLGA3 Antibody

Size: 100µg specific antibody in 200µl



### Target Protein

**Principal Names:** GOLGA3, HGNC:4426, GCP170, MEA-2, Golgi autoantigen, golgin subfamily a, 3, Golgi complex-associated protein of 170 kD, Golgi membrane associated protein, Golgi peripheral membrane protein, SY2/SY10 protein, golgin-160, golgin-165, male enhanced antigen-2

**Official Symbol:** GOLGA3

**Accession Number(s):** NP\_005886.2

**Human GeneID(s):** [2802](#)

### Immunogen

Peptide with sequence C-HSQSRASKEGPGE, from the C Terminus of the protein sequence according to NP\_005886.2.

Please note the [peptide](#) is available for sale.

### Purification and Storage

Purified from goat serum by ammonium sulphate precipitation followed by antigen affinity chromatography using the immunizing peptide.

Supplied at 0.5 mg/ml in Tris saline, 0.02% sodium azide, pH7.3 with 0.5% bovine serum albumin.

Aliquot and store at -20°C. Minimize freezing and thawing.

### Applications Tested

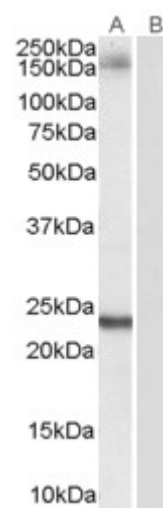
**Peptide ELISA:** antibody detection limit dilution 1:16000.

**Western blot:** Approx 170kDa band observed in human HeLa lysates (calculated MW of 167kDa according to NP\_005886.2). Recommended concentration: 0.1-0.3µg/ml. An additional band of unknown identity was also consistently observed at approx 25kDa. This band was successfully blocked by incubation with the immunising peptide. We would appreciate any feedback from people in the field - have any results been reported with other antibodies/lysates? Have any further splice variants/modified forms been reported?

### Species Reactivity

**Tested:** Human

**Expected from sequence similarity:** Human



EB06926 (0.1µg/ml) staining of Hela lysate (35µg protein in RIPA buffer). Primary incubation was 1 hour.  
Detected by chemiluminescence.