



## UK Office

### Everest Biotech Ltd

Cherwell Innovation Centre  
77 Heyford Park  
Upper Heyford  
Oxfordshire  
OX25 5HD  
UK

Enquiries:

[info@everestbiotech.com](mailto:info@everestbiotech.com)

Sales:

[sales@everestbiotech.com](mailto:sales@everestbiotech.com)

Tech support:

[support@everestbiotech.com](mailto:support@everestbiotech.com)

Tel: +44 (0)1869 238326

Fax: +44 (0)1869 238327

## US Office

### Everest Biotech c/o Abcore

405 Maple Street, Suite A106  
Ramona,  
CA 92065  
USA

Inquiries:

[info@everestbiotech.com](mailto:info@everestbiotech.com)

Sales:

[usasales@everestbiotech.com](mailto:usasales@everestbiotech.com)

Tech support:

[support@everestbiotech.com](mailto:support@everestbiotech.com)

Tel: 888-320-4628 (toll-free)

Fax: 888-841-9041

[www.everestbiotech.com](http://www.everestbiotech.com)

**Research Use Only. Not for  
diagnostic or therapeutic use.**

## EB06730 - Goat Anti-GAD2 / GAD65 Antibody

Size: 100µg specific antibody in 200µl



### Target Protein

**Principal Names:** GAD2, GAD65, glutamate decarboxylase 2 (pancreatic islets and brain, 65kDa), Glutamate decarboxylase-2 (pancreas), glutamate decarboxylase 2 (pancreatic islets and brain, 65kD), RP11-420F12.2, MGC161605, MGC161607, Glutamate decarboxylase-2 (pancreas)

**Official Symbol:** GAD2

**Accession Number(s):** NP\_000809.1; NP\_001127838.1

**Human GeneID(s):** [2572](#)

**Important Comments:** This antibody is expected to recognise both reported variants.

### Immunogen

Peptide with sequence C-TLEDNEERMSRLSK, from the internal region of the protein sequence according to NP\_000809.1; NP\_001127838.1.

Please note the [peptide](#) is available for sale.

### Purification and Storage

Purified from goat serum by ammonium sulphate precipitation followed by antigen affinity chromatography using the immunizing peptide.

Supplied at 0.5 mg/ml in Tris saline, 0.02% sodium azide, pH7.3 with 0.5% bovine serum albumin.

Aliquot and store at -20°C. Minimize freezing and thawing.

### Applications Tested

**Peptide ELISA:** antibody detection limit dilution 1:32000.

**Western blot:** Approx 65kDa band observed in Human Brain (Hippocampus) lysates (calculated MW of 65.4kDa according to NP\_000809.1). Recommended concentration: 0.5-1.5µg/ml. Primary incubation was 1 hour.

**IHC:** Paraffin embedded Human Brain (Cortex). Recommended concentration: 6-8µg/ml.

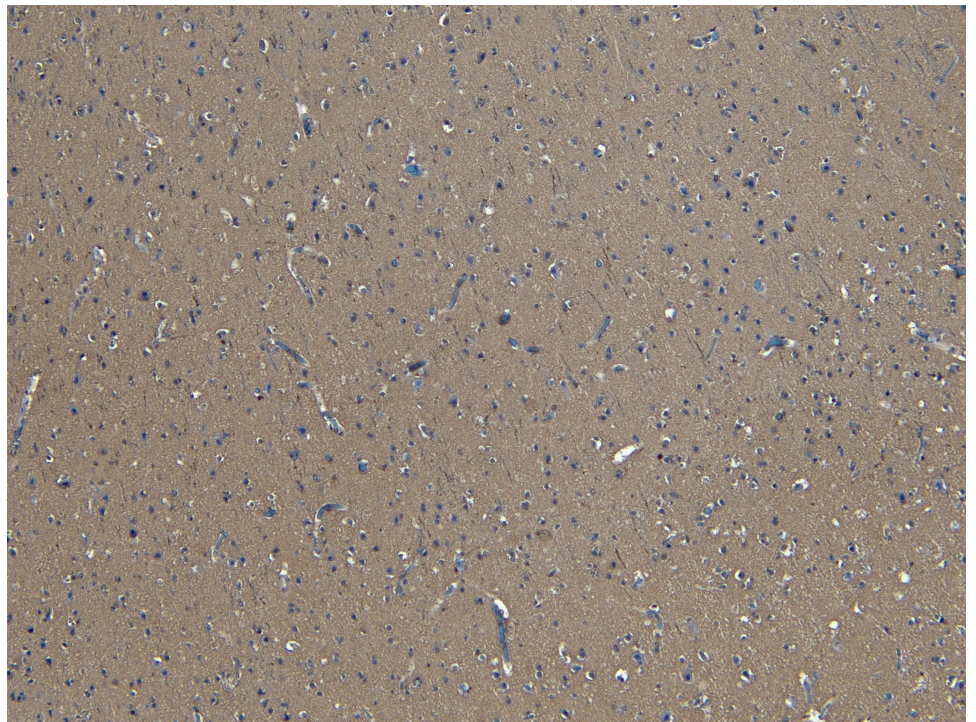
### Species Reactivity

**Tested:** Human

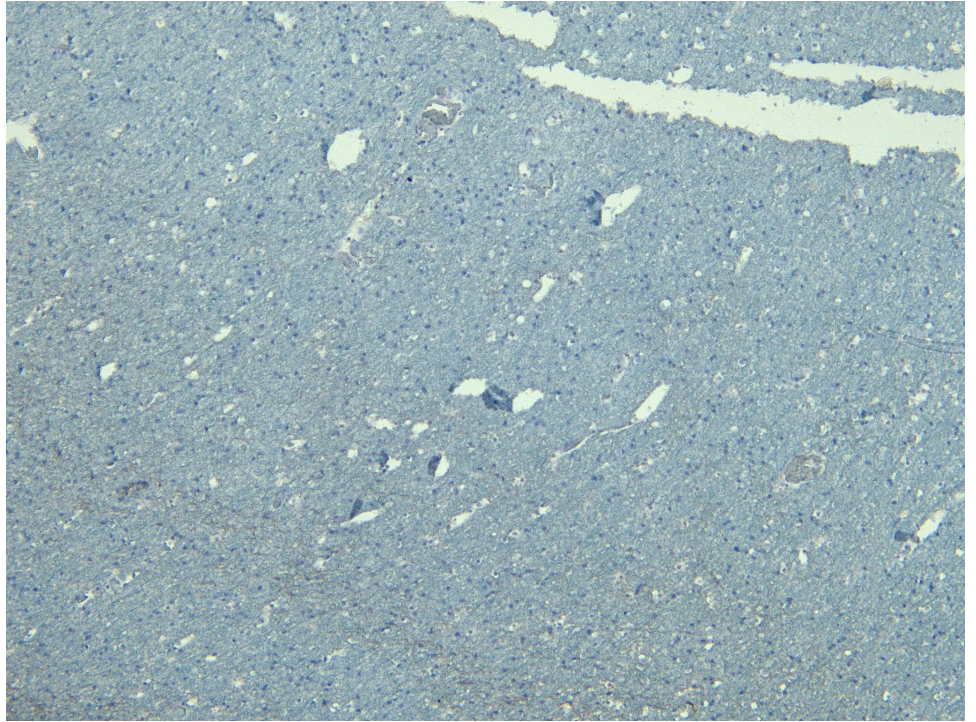
**Expected from sequence similarity:** Human, Mouse, Rat, Dog



EB06730 (0.5µg/ml) staining of Human Brain (Hippocampus) lysate (35µg protein in RIPA buffer). Detected by chemiluminescence.



EB06730 (6µg/ml) staining of paraffin embedded Human Cortex. Heat induced antigen retrieval with citrate buffer pH 6, HRP-staining.



EB06730 Negative Control showing staining of paraffin embedded Human Cortex, with no primary antibody.