



UK Office

Everest Biotech Ltd

Cherwell Innovation Centre
77 Heyford Park
Upper Heyford
Oxfordshire
OX25 5HD
UK

Enquiries:

info@everestbiotech.com

Sales:

sales@everestbiotech.com

Tech support:

support@everestbiotech.com

Tel: +44 (0)1869 238326

Fax: +44 (0)1869 238327

US Office

Everest Biotech c/o Abcore

405 Maple Street, Suite A106
Ramona,
CA 92065
USA

Inquiries:

info@everestbiotech.com

Sales:

usasales@everestbiotech.com

Tech support:

support@everestbiotech.com

Tel: 888-320-4628 (toll-free)

Fax: 888-841-9041

www.everestbiotech.com

**Research Use Only. Not for
diagnostic or therapeutic use.**

EB05294 - Goat Anti-FOXP3 / SCURFIN Antibody

Size: 100µg specific antibody in 200µl



Target Protein

Principal Names: FOXP3, SCURFIN, forkhead box P3, JM2, AIID, IPEX, PIDX, XPID, DIETER, JM2 protein, immunodeficiency, polyendocrinopathy, enteropathy, X-linked, immune dysregulation, polyendocrinopathy, enteropathy, X-linked, MGC141961, MGC141963, FOXP3delta7, scurfin

Official Symbol: FOXP3

Accession Number(s): NP_054728.2; NP_001107849.1

Human GeneID(s): [50943](#)

Important Comments: This antibody is expected to recognize both reported isoforms (NP_054728.2 and NP_001107849.1)

Immunogen

Peptide with sequence SQRPSRCSNPTPGP, from the C Terminus of the protein sequence according to NP_054728.2; NP_001107849.1.

Please note the [peptide](#) is available for sale.

Purification and Storage

Purified from goat serum by ammonium sulphate precipitation followed by antigen affinity chromatography using the immunizing peptide.

Supplied at 0.5 mg/ml in Tris saline, 0.02% sodium azide, pH7.3 with 0.5% bovine serum albumin.

Aliquot and store at -20°C. Minimize freezing and thawing.

Applications Tested

Peptide ELISA: antibody detection limit dilution 1:8000.

Western blot: Approx 48-50kDa band observed in Human Muscle lysates and in lysates of cell line MOLT4 (calculated MW of 47.2kDa according to NP_054728.2).

Recommended concentration: 1-3µg/ml. Primary incubation 1 hour at room temperature.

Negative Control: Human Pancreas lysate.

IHC: Paraffin embedded Human Spleen. Recommended concentration: 6-8µg/ml.

Immunofluorescence: Strong expression of the protein seen in the nucleoplasm of U2OS cells. Recommended concentration: 10µg/ml.

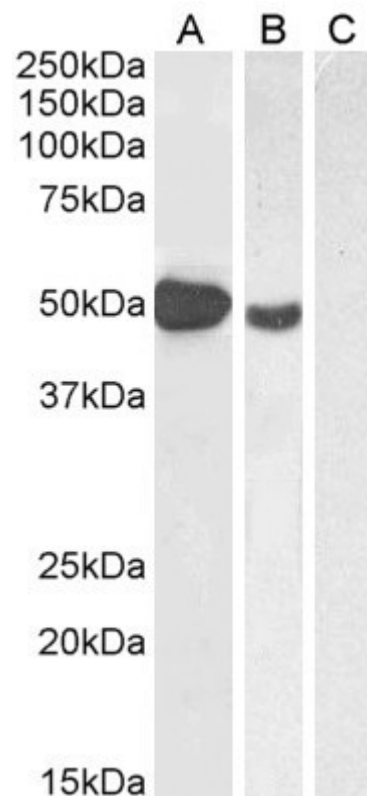
Flow Cytometry: Flow cytometric analysis of Jurkat cells. Recommended concentration: 10ug/ml.

Immunocytochemistry: CD25-sorted (Treg) Human blood cells with nuclear speckled staining. Recommended concentration 2-4ug/ml for overnight staining.

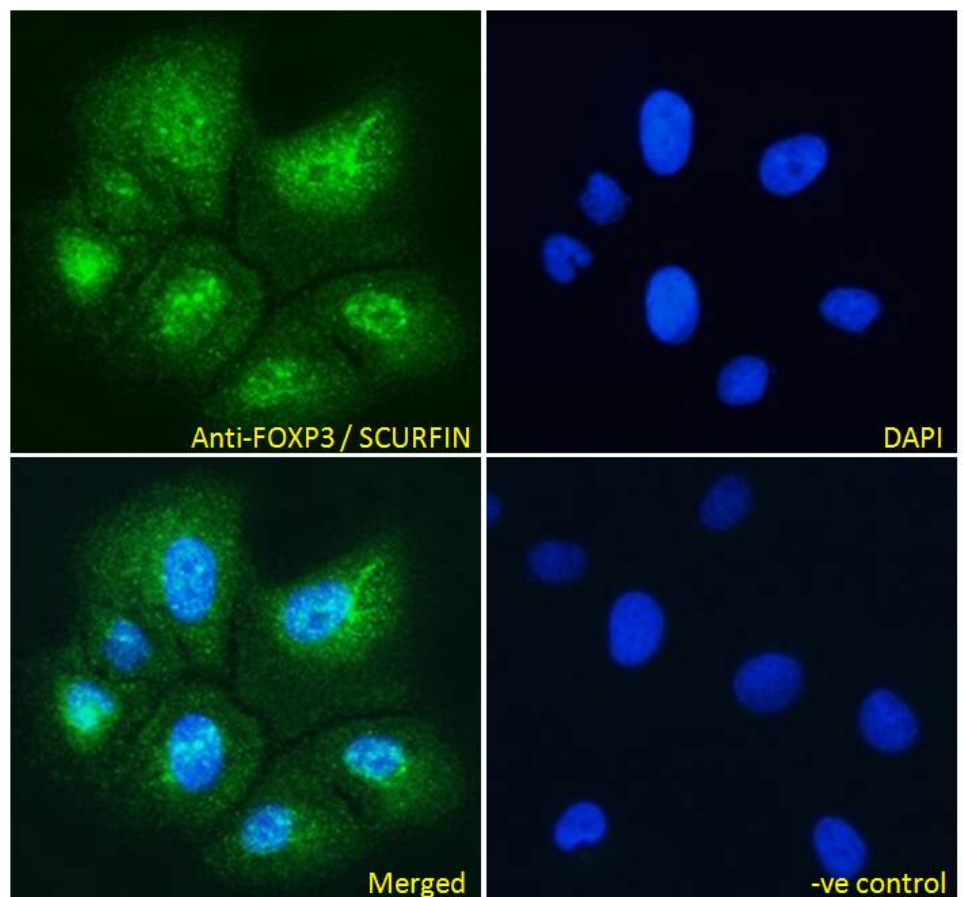
Species Reactivity

Tested: Human

Expected from sequence similarity: Human

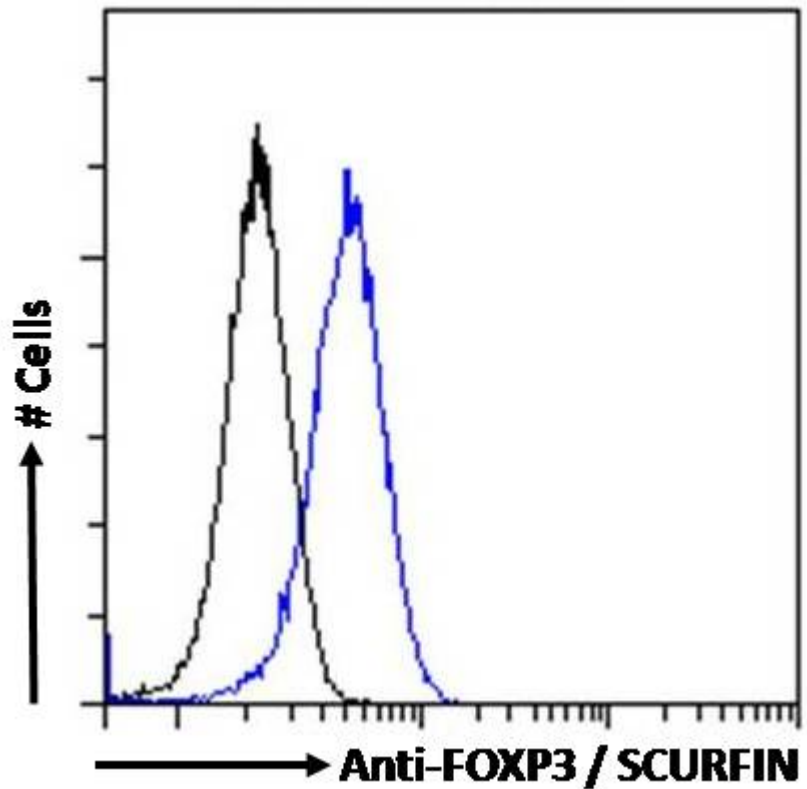


EB05294 (1 μ g/ml) staining of Human Muscle (A), (2 μ g/ml) MOLT4 (B) and (1 μ g/ml) negative control Pancreas (C) lysate (35 μ g protein in RIPA buffer). Detected by chemiluminescence.

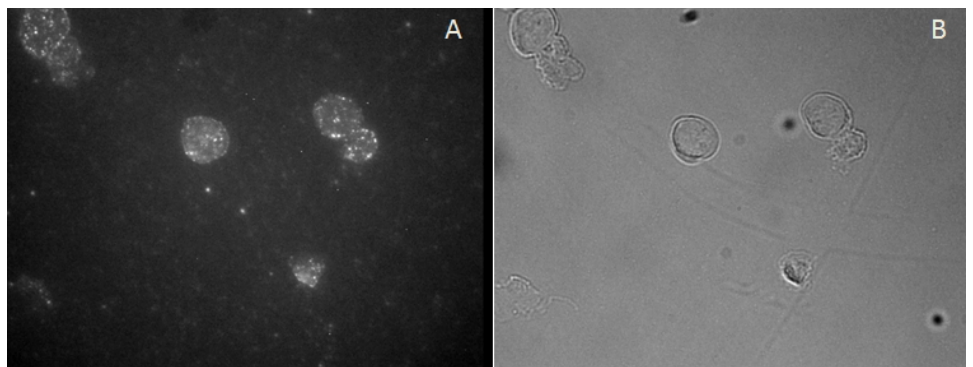


EB05294 Immunofluorescence analysis of paraformaldehyde fixed U2OS cells, permeabilized with 0.15% Triton. Primary incubation 1hr (10 μ g/ml) followed by Alexa Fluor 488 secondary antibody (4 μ g/ml), showing strong

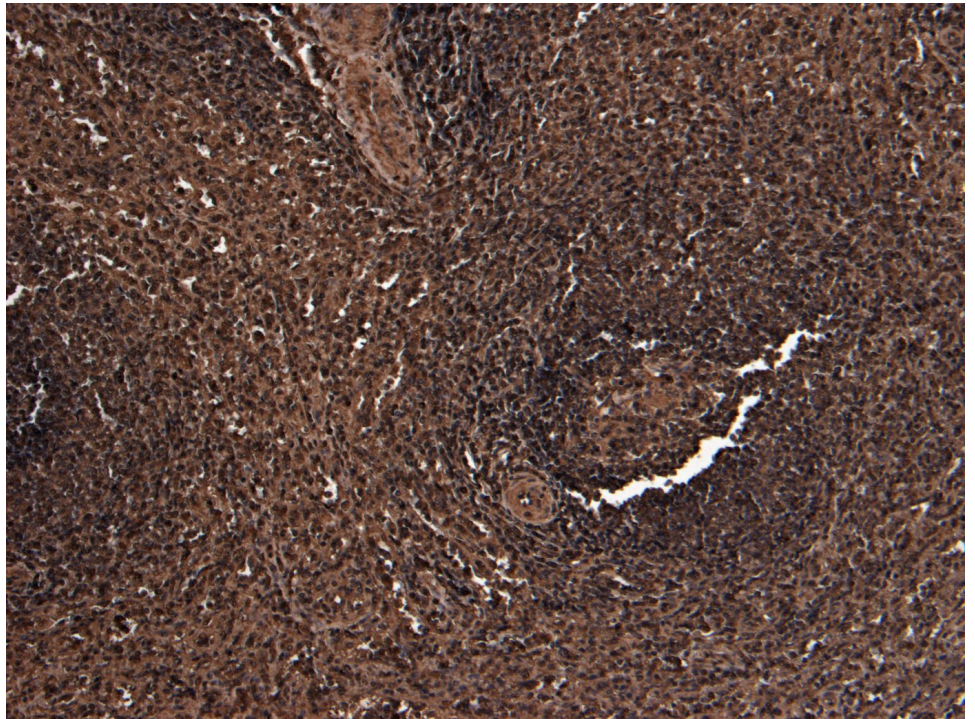
localization to nucleoplasm. The nuclear stain is DAPI (blue). Negative control: Unimmunized goat IgG (10ug/ml) followed by Alexa Fluor 488 secondary antibody (4ug/ml).



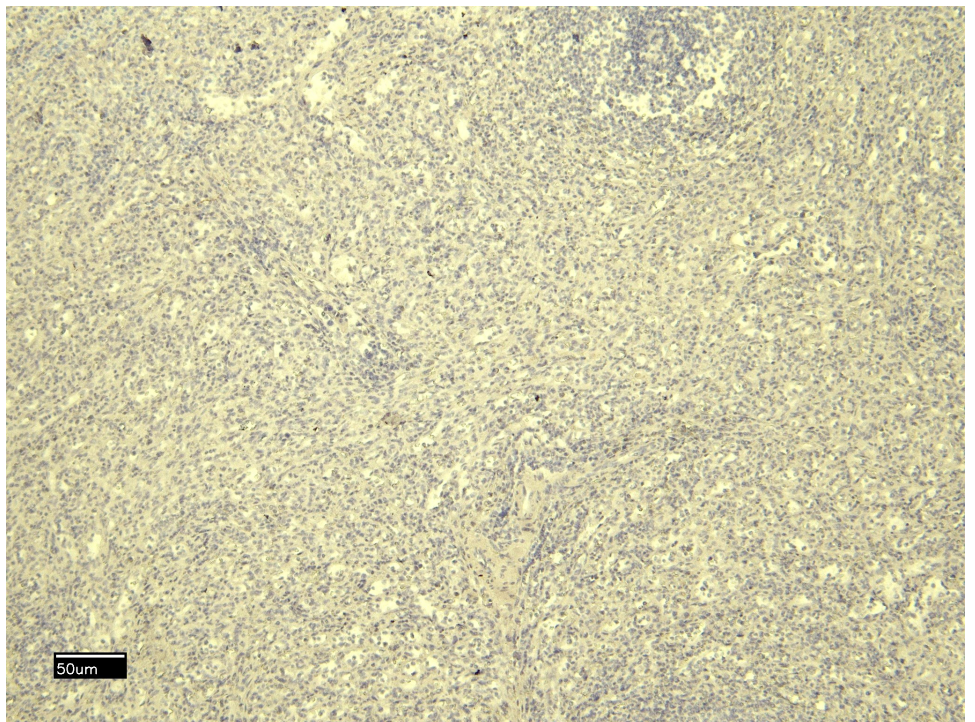
EB05294 Flow cytometric analysis of paraformaldehyde fixed Jurkat cells (blue line), permeabilized with 0.5% Triton. Primary incubation 1hr (10ug/ml) followed by Alexa Fluor 488 secondary antibody (4ug/ml). IgG control: Unimmunized goat IgG (black line) followed by Alexa Fluor 488 secondary antibody.



EB05294 staining of CD25-sorted (Treg) Human blood cells gathered by cytospin and detected by FITC (A) and in phase contrast (B).



EB05294 (8µg/ml) staining of paraffin embedded Human Spleen. Heat induced antigen retrieval with citrate buffer Ph 6, HRP-staining.



EB05294 Negative Control showing staining of paraffin embedded Human Spleen, with no primary antibody.