



UK Office

Everest Biotech Ltd

Cherwell Innovation Centre
77 Heyford Park
Upper Heyford
Oxfordshire
OX25 5HD
UK

Enquiries:

info@everestbiotech.com

Sales:

sales@everestbiotech.com

Tech support:

support@everestbiotech.com

Tel: +44 (0)1869 238326

Fax: +44 (0)1869 238327

US Office

Everest Biotech c/o Abcore

405 Maple Street, Suite A106
Ramona,
CA 92065
USA

Inquiries:

info@everestbiotech.com

Sales:

usasales@everestbiotech.com

Tech support:

support@everestbiotech.com

Tel: 888-320-4628 (toll-free)

Fax: 888-841-9041

www.everestbiotech.com

**Research Use Only. Not for
diagnostic or therapeutic use.**

EB05449 - Goat Anti-Flotillin 1 Antibody

Size: 100µg specific antibody in 200µl



Target Protein

Principal Names: FLOT1, flotillin 1, reggie-2, integral membrane component of caveolae, DADB-118P11.2

Official Symbol: FLOT1

Accession Number(s): NP_005794.1; NP_001305804.1

Human GeneID(s): [10211](#)

Non-Human GeneID(s): 14251 (mouse)

Important Comments: This antibody is expected to recognize both reported isoforms (NP_005794.1; NP_001305804.1).

Immunogen

Peptide with sequence C-SISQVNHKPLRTA, from the C Terminus of the protein sequence according to NP_005794.1; NP_001305804.1.

Please note the [peptide](#) is available for sale.

Purification and Storage

Purified from goat serum by ammonium sulphate precipitation followed by antigen affinity chromatography using the immunizing peptide.

Supplied at 0.5 mg/ml in Tris saline, 0.02% sodium azide, pH7.3 with 0.5% bovine serum albumin.

Aliquot and store at -20°C. Minimize freezing and thawing.

Applications Tested

Peptide ELISA: antibody detection limit dilution 1:32000.

Western blot: Approx 48kDa band observed in lysates of cell line K562 and in preliminary testing of cell lysate MCF7 (calculated MW of 47.4kDa according to NP_005794.1).

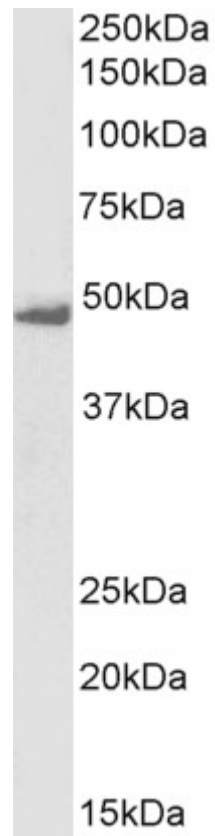
Recommended concentration: 0.1-0.3µg/ml. Primary incubation 1 hour at room temperature.

IHC: Paraffin embedded Human Kidney. Recommended concentration: 5µg/ml.

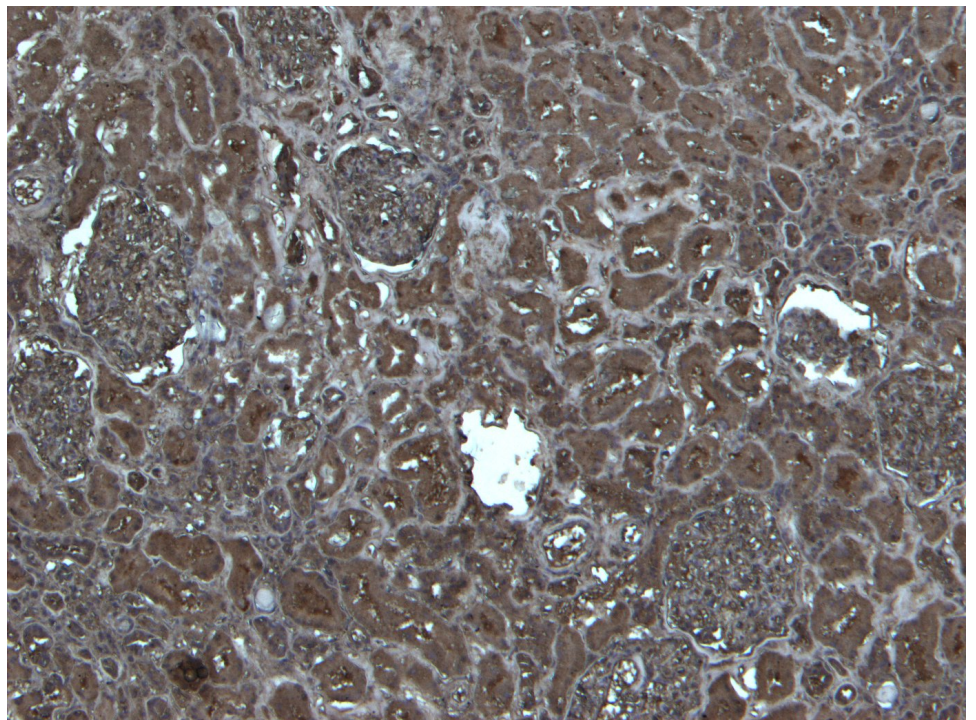
Species Reactivity

Tested: Human

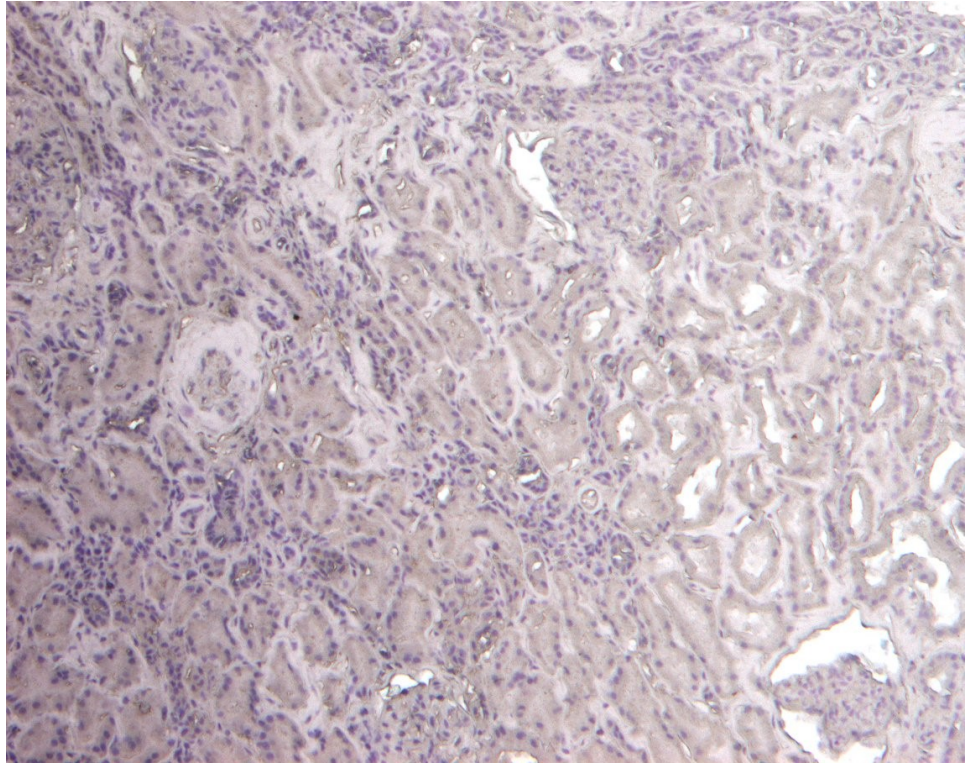
Expected from sequence similarity: Human, Dog, Pig, Cow



EB05449 (0.1µg/ml) staining of K562 lysate (35µg protein in RIPA buffer). Detected by chemiluminescence.



EB05449 (5µg/ml) staining of paraffin embedded Human Kidney. Heat induced antigen retrieval with citrate buffer pH 6, HRP-staining.



EB05449 Negative Control showing staining of paraffin embedded Human Kidney, with no primary antibody.