



UK Office

Everest Biotech Ltd

Cherwell Innovation Centre
77 Heyford Park
Upper Heyford
Oxfordshire
OX25 5HD
UK

Enquiries:

info@everestbiotech.com

Sales:

sales@everestbiotech.com

Tech support:

support@everestbiotech.com

Tel: +44 (0)1869 238326

Fax: +44 (0)1869 238327

US Office

Everest Biotech c/o Abcore

405 Maple Street, Suite A106
Ramona,
CA 92065
USA

Inquiries:

info@everestbiotech.com

Sales:

usasales@everestbiotech.com

Tech support:

support@everestbiotech.com

Tel: 888-320-4628 (toll-free)

Fax: 888-841-9041

www.everestbiotech.com

**Research Use Only. Not for
diagnostic or therapeutic use.**

EB10171 - Goat Anti-ETFB / FP585 (aa 152-165) Antibody

Size: 100µg specific antibody in 200µl



Target Protein

Principal Names: electron transfer flavoprotein beta subunit, electron transfer flavoprotein beta-subunit, electron transfer flavoprotein, beta polypeptide, electron-transfer-flavoprotein, beta polypeptide, electron-transferring-flavoprotein, beta polyp, FP585, MADD, ETFB

Official Symbol: ETFB

Accession Number(s): NP_001976.1; NP_001014763.1

Human GeneID(s): [2109](#)

Non-Human GeneID(s): 110826 (mouse), 292845 (rat)

Important Comments: This antibody is expected to recognize both reported isoforms (NP_001976.1; NP_001014763.1). Amino acid numbering in the name above refers to NP_001976.1).

Immunogen

Peptide with sequence C-QVTLEGDKLKVERE, from the internal region of the protein sequence according to NP_001976.1; NP_001014763.1.

Please note the [peptide](#) is available for sale.

Purification and Storage

Purified from goat serum by ammonium sulphate precipitation followed by antigen affinity chromatography using the immunizing peptide.

Supplied at 0.5 mg/ml in Tris saline, 0.02% sodium azide, pH7.3 with 0.5% bovine serum albumin.

Aliquot and store at -20°C. Minimize freezing and thawing.

Applications Tested

Peptide ELISA: antibody detection limit dilution 1:8000.

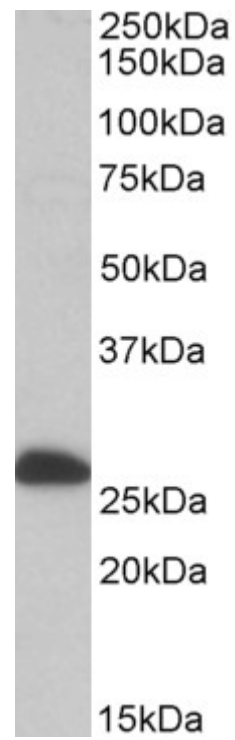
Western blot: Approx 27kDa band observed in Human, Mouse and Rat Liver lysates (calculated MW of 27.8kDa according to NP_001976.1). Recommended concentration: 1-3µg/ml.

IHC: In paraffin embedded Human Liver shows mitochondrial staining in hepatocytes. Recommended concentration, 3-5µg/ml.

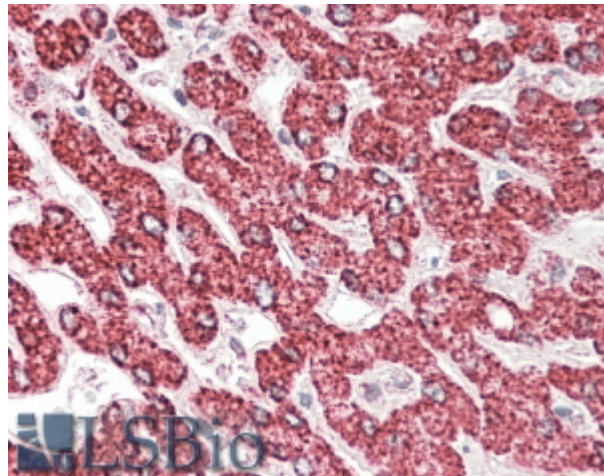
Species Reactivity

Tested: Human, Mouse, Rat

Expected from sequence similarity: Human, Mouse, Rat, Dog, Cow



EB10171 (0.1 μ g/ml) staining of Human Liver lysate (35 μ g protein in RIPA buffer). Primary incubation was 1 hour.
Detected by chemiluminescence.



EB10171 (3.8 μ g/ml) staining of paraffin embedded Human Liver. Steamed antigen retrieval with citrate buffer pH 6, AP-staining.