



UK Office

Everest Biotech Ltd

Cherwell Innovation Centre
77 Heyford Park
Upper Heyford
Oxfordshire
OX25 5HD
UK

Enquiries:

info@everestbiotech.com

Sales:

sales@everestbiotech.com

Tech support:

support@everestbiotech.com

Tel: +44 (0)1869 238326

Fax: +44 (0)1869 238327

US Office

Everest Biotech c/o Abcore

405 Maple Street, Suite A106
Ramona,
CA 92065
USA

Inquiries:

info@everestbiotech.com

Sales:

usasales@everestbiotech.com

Tech support:

support@everestbiotech.com

Tel: 888-320-4628 (toll-free)

Fax: 888-841-9041

www.everestbiotech.com

**Research Use Only. Not for
diagnostic or therapeutic use.**

EB11854 - Goat Anti-EEF1A2 Antibody

Size: 100µg specific antibody in 200µl



Target Protein

Principal Names: EEF1A2, eEF1A-2, EEF1AL, EF1A, EF-1-alpha-2, elongation factor 1-alpha 2, elongation factor-1 alpha, eukaryotic elongation factor 1 A-2, eukaryotic translation elongation factor 1 alpha 2, FLJ41696, HS1, OTTHUMP00000031776, statin S1, statin-S1, STN, STNL

Official Symbol: EEF1A2

Accession Number(s): NP_001949.1

Human GeneID(s): [1917](#)

Non-Human GeneID(s): 13628 (mouse), 24799 (rat)

Immunogen

Peptide with sequence C-NPATVPFVPIS, from the internal region of the protein sequence according to NP_001949.1.

Please note the [peptide](#) is available for sale.

Purification and Storage

Purified from goat serum by ammonium sulphate precipitation followed by antigen affinity chromatography using the immunizing peptide.

Supplied at 0.5 mg/ml in Tris saline, 0.02% sodium azide, pH7.3 with 0.5% bovine serum albumin.

Aliquot and store at -20°C. Minimize freezing and thawing.

Applications Tested

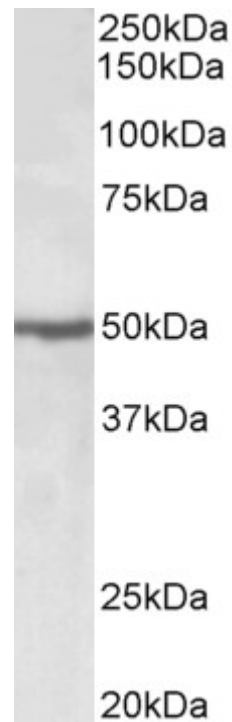
Peptide ELISA: antibody detection limit dilution 1:8000.

Western blot: Approx 50kDa band observed in lysates of cell lines Daudi and Jurkat (calculated MW of 50.5kDa according to NP_001949.1). The same band is observed in lysates of Mouse and Rat Heart and Skeletal Muscle. Recommended concentration: 0.5-2µg/ml.

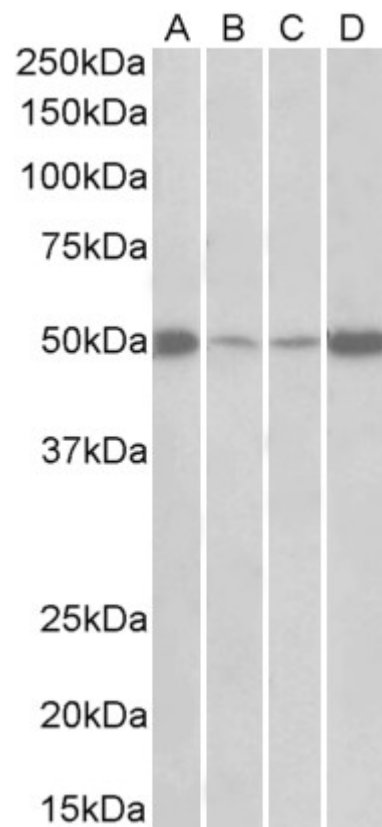
Species Reactivity

Tested: Human, Mouse, Rat

Expected from sequence similarity: Human, Mouse, Rat, Dog, Cow



EB11854 (0.5µg/ml) staining of Jurkat lysate (35µg protein in RIPA buffer). Primary incubation was 1 hour. Detected by chemiluminescence.



EB11854 (0.5µg/ml) staining of Mouse (A+C) and Rat (B+D) Skeletal Muscle (A+B) and Heart (C+D) lysates (35µg protein in RIPA buffer). Primary incubation was 1 hour. Detected by chemiluminescence.