



UK Office

Everest Biotech Ltd

Cherwell Innovation Centre
77 Heyford Park
Upper Heyford
Oxfordshire
OX25 5HD
UK

Enquiries:

info@everestbiotech.com

Sales:

sales@everestbiotech.com

Tech support:

support@everestbiotech.com

Tel: +44 (0)1869 238326

Fax: +44 (0)1869 238327

US Office

Everest Biotech c/o Abcore

405 Maple Street, Suite A106
Ramona,
CA 92065
USA

Inquiries:

info@everestbiotech.com

Sales:

usasales@everestbiotech.com

Tech support:

support@everestbiotech.com

Tel: 888-320-4628 (toll-free)

Fax: 888-841-9041

www.everestbiotech.com

**Research Use Only. Not for
diagnostic or therapeutic use.**

EB06940-B - Goat Anti-Duffy / FY / DARC, Biotinylated Antibody

Size: 100µg specific antibody in 200µl



Target Protein

Principal Names: ACKR1, atypical chemokine receptor 1 (Duffy blood group), CCBP1, CD234, DARC, Dfy, FY, GPD, GpFy, WBCQ1, Duffy antigen chemokine receptor, Duffy blood group antigen, Duffy blood group, atypical chemokine receptor, Duffy blood group, chemokine receptor, Fy glycoprotein, duffy blood group chemokine receptor, glycoprotein D, plasmodium vivax receptor, CTA-134P22.3, HGNC:4035

Official Symbol: ACKR1

Accession Number(s): NP_001116423.1; NP_002027.2

Human GeneID(s): [2532](#)

Important Comments: This antibody is expected to recognize both reported isoforms (NP_001116423.1; NP_002027.2).

Immunogen

Peptide with sequence HRAELSPSTENSSQLDFEDC., from the N Terminus of the protein sequence according to NP_001116423.1; NP_002027.2.

Please note the [peptide](#) is available for sale.

Purification and Storage

Purified from goat serum by ammonium sulphate precipitation followed by antigen affinity chromatography using the immunizing peptide.

Supplied at 0.5 mg/ml in Tris saline, 0.02% sodium azide, pH7.3 with 0.5% bovine serum albumin.

Aliquot and store at -20°C. Minimize freezing and thawing.

Applications Tested

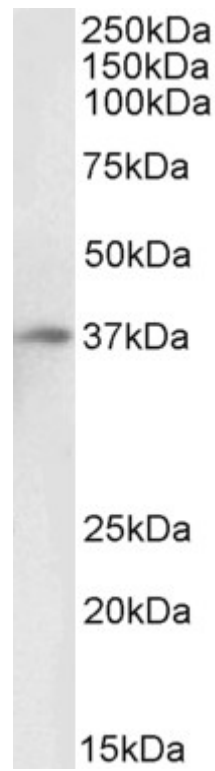
Peptide ELISA: antibody detection limit dilution 1:16000.

Western blot: Approx 37kDa band observed in Human Liver lysates (calculated MW of 35.7kDa according to NP_001116423.1). See non-biotinylated parental product's datasheet for further QC data. Recommended concentration: 0.1-0.3µg/ml.

Species Reactivity

Tested: Human

Expected from sequence similarity: Human



Biotinylated EB06940 (0.1µg/ml) staining of Human Liver lysate (35µg protein in RIPA buffer), exactly mirroring its parental non-biotinylated product. Primary incubation was 1 hour. Detected by chemiluminescence, using streptavidin-HRP and using NAP blocker as a substitute for skimmed milk.