



UK Office

Everest Biotech Ltd

Cherwell Innovation Centre
77 Heyford Park
Upper Heyford
Oxfordshire
OX25 5HD
UK

Enquiries:

info@everestbiotech.com

Sales:

sales@everestbiotech.com

Tech support:

support@everestbiotech.com

Tel: +44 (0)1869 238326

Fax: +44 (0)1869 238327

US Office

Everest Biotech c/o Abcore

405 Maple Street, Suite A106
Ramona,
CA 92065
USA

Inquiries:

info@everestbiotech.com

Sales:

usasales@everestbiotech.com

Tech support:

support@everestbiotech.com

Tel: 888-320-4628 (toll-free)

Fax: 888-841-9041

www.everestbiotech.com

**Research Use Only. Not for
diagnostic or therapeutic use.**

EB07914 - Goat Anti-COX4I1 Antibody

Size: 100µg specific antibody in 200µl



Target Protein

Principal Names: COX4I1, cytochrome c oxidase subunit IV isoform 1, COX4, COXIV, MGC72016, COX4-1, COXIV-1, cytochrome c oxidase polypeptide IV

Official Symbol: COX4I1

Accession Number(s): NP_001852.1; NP_001305726.1

Human GeneID(s): [1327](#)

Important Comments: This antibody is expected to recognize reported isoforms 1 and 4 (NP_001852.1; NP_001305726.1). Reported variants represent identical protein: NP_001305715.1, NP_001852.1. This product may cross-react to COX4I2 (GeneID 84701).

Immunogen

Peptide with sequence C-QGLASKWDYEKNE, from the C Terminus of the protein sequence according to NP_001852.1; NP_001305726.1.

Please note the [peptide](#) is available for sale.

Purification and Storage

Purified from goat serum by ammonium sulphate precipitation followed by antigen affinity chromatography using the immunizing peptide.

Supplied at 0.5 mg/ml in Tris saline, 0.02% sodium azide, pH7.3 with 0.5% bovine serum albumin.

Aliquot and store at -20°C. Minimize freezing and thawing.

Applications Tested

Peptide ELISA: antibody detection limit dilution 1:4000.

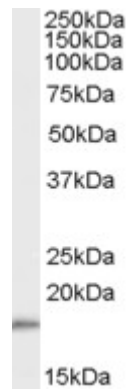
Western blot: Approx 18kDa band observed in human skeletal muscle lysates (calculated MW of 19.6kDa according to NP_001852.1). Recommended concentration: 0.01-0.03µg/ml.

IHC: Paraffin embedded Human Thyroid and Testis. Recommended concentration: 2.5µg/ml.

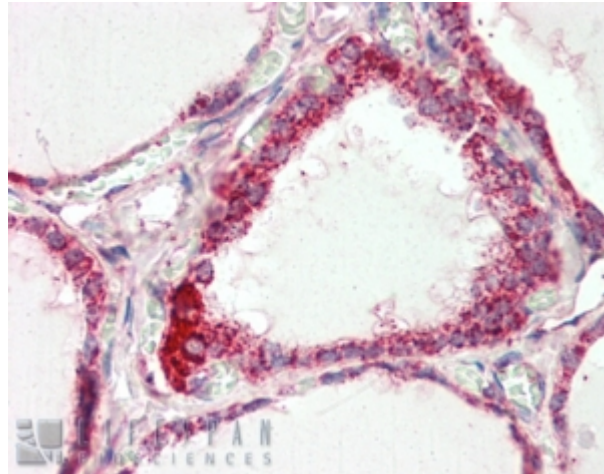
Species Reactivity

Tested: Human

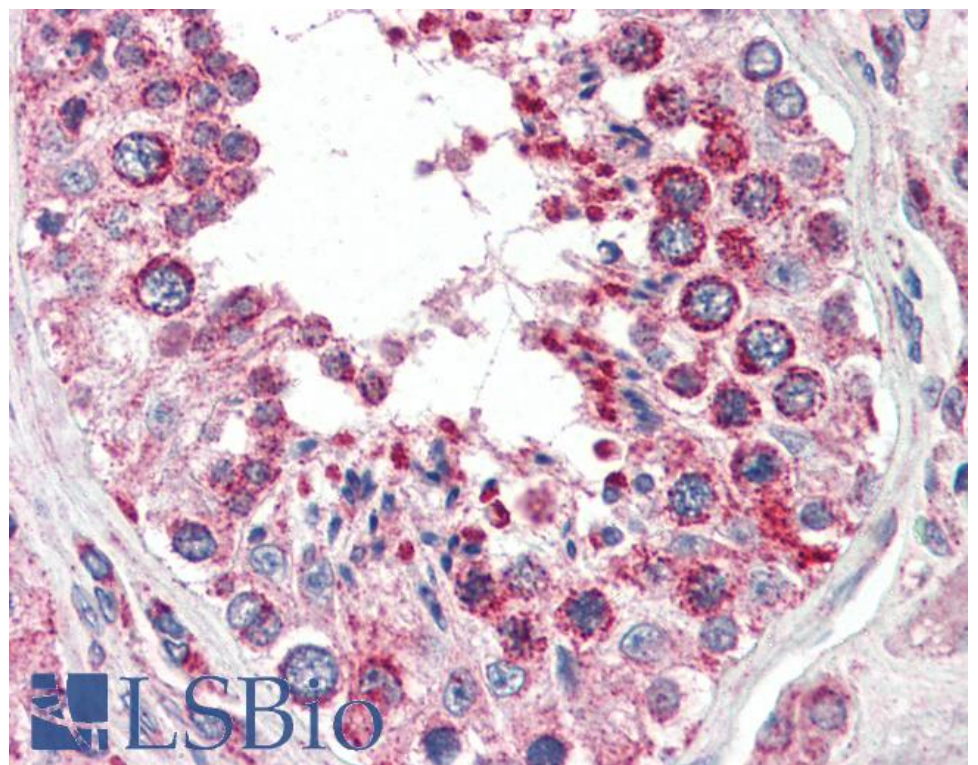
Expected from sequence similarity: Human



EB07914 (0.01µg/ml) staining of human muscle lysate (35µg protein in RIPA buffer). Primary incubation was 1 hour. Detected by chemiluminescence.



EB07914 (2.5µg/ml) staining of paraffin embedded Human Thyroid Gland. Steamed antigen retrieval with citrate buffer pH 6, AP-staining.



EB07914 (2.5µg/ml) staining of paraffin embedded Human Testis. Steamed antigen retrieval with citrate buffer pH 6, AP-staining.