



UK Office

Everest Biotech Ltd

Cherwell Innovation Centre
77 Heyford Park
Upper Heyford
Oxfordshire
OX25 5HD
UK

Enquiries:

info@everestbiotech.com

Sales:

sales@everestbiotech.com

Tech support:

support@everestbiotech.com

Tel: +44 (0)1869 238326

Fax: +44 (0)1869 238327

US Office

Everest Biotech c/o Abcore

405 Maple Street, Suite A106
Ramona,
CA 92065
USA

Inquiries:

info@everestbiotech.com

Sales:

usasales@everestbiotech.com

Tech support:

support@everestbiotech.com

Tel: 888-320-4628 (toll-free)

Fax: 888-841-9041

www.everestbiotech.com

**Research Use Only. Not for
diagnostic or therapeutic use.**

EB06816 - Goat Anti-Cathepsin B Antibody

Size: 100µg specific antibody in 200µl



Target Protein

Principal Names: CTSB, cathepsin B, HGNC:2527, APPS, CPSB, APP secretase, amyloid precursor protein secretase, cathepsin B1 cysteine protease, preprocathepsin B

Official Symbol: CTSB

Accession Number(s): NP_001899; NP_680090; NP_680091; NP_680092; NP_680093

Human GeneID(s): [1508](#)

Important Comments: All five transcript variants encode the same protein (NP_001899; NP_680090; NP_680091; NP_680092; NP_680093).

Immunogen

Peptide with sequence C-DELVNYVNRNT, from the internal region of the protein sequence according to NP_001899; NP_680090; NP_680091; NP_680092; NP_680093.

Please note the [peptide](#) is available for sale.

Purification and Storage

Purified from goat serum by ammonium sulphate precipitation followed by antigen affinity chromatography using the immunizing peptide.

Supplied at 0.5 mg/ml in Tris saline, 0.02% sodium azide, pH7.3 with 0.5% bovine serum albumin.

Aliquot and store at -20°C. Minimize freezing and thawing.

Applications Tested

Peptide ELISA: antibody detection limit dilution 1:64000.

IHC: Paraffin embedded Human Small Intestine. Recommended concentration: 5µg/ml.

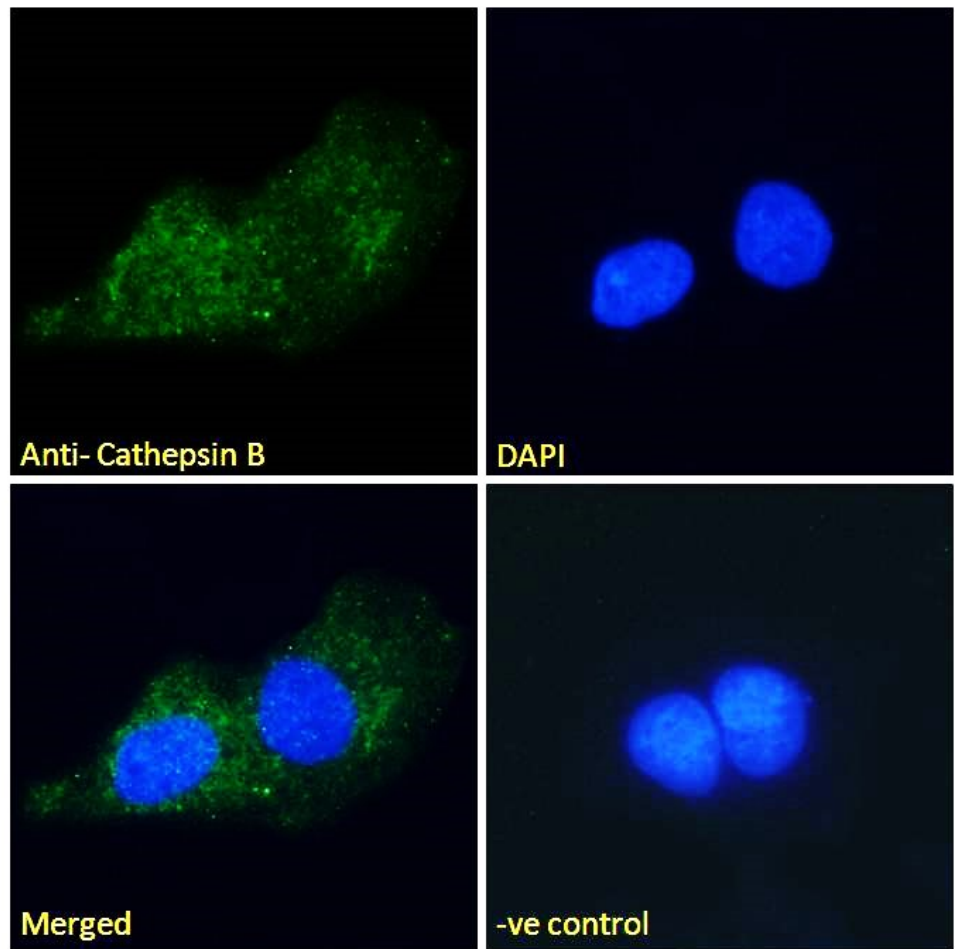
Immunofluorescence: Strong expression of the protein seen in the vesicles of HeLa and USO2 cells. Recommended concentration: 10µg/ml.

Flow Cytometry: Flow cytometric analysis of HepG2 cells. Recommended concentration: 10ug/ml.

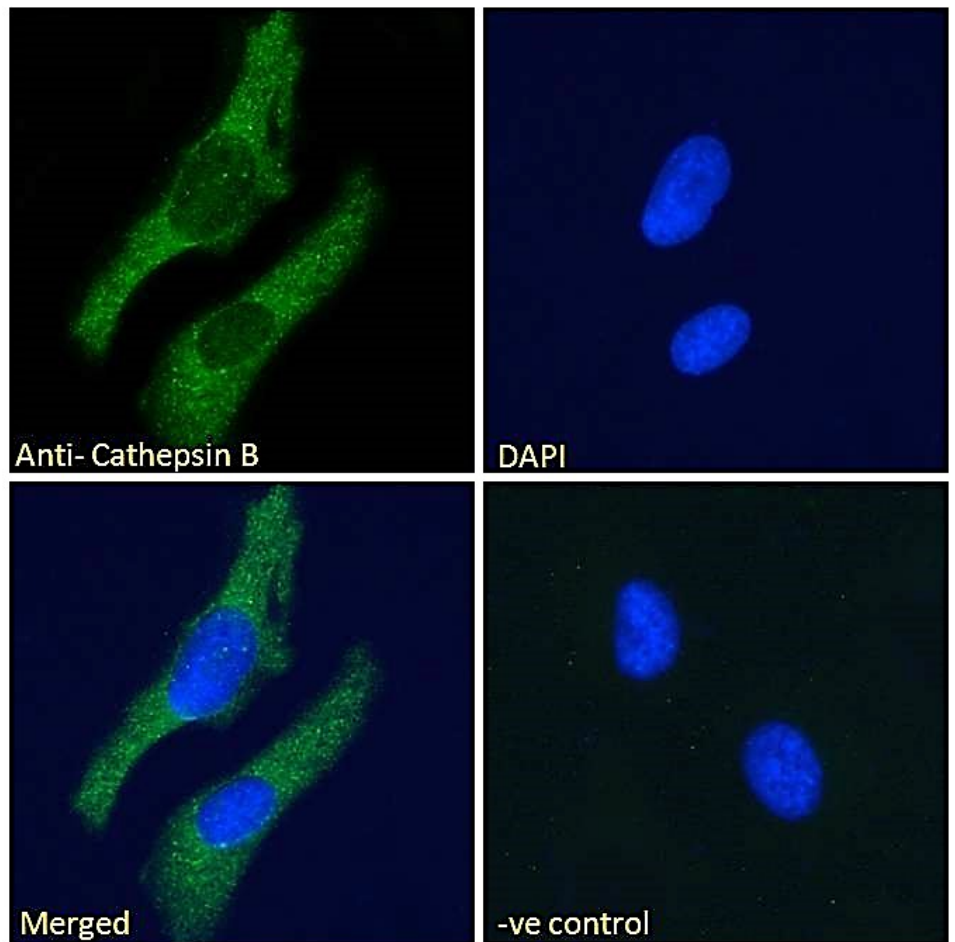
Species Reactivity

Tested: Human

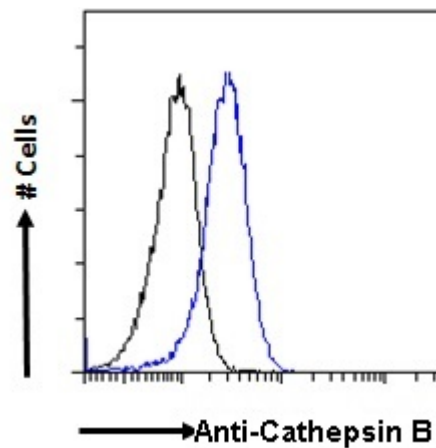
Expected from sequence similarity: Human, Mouse, Rat, Dog



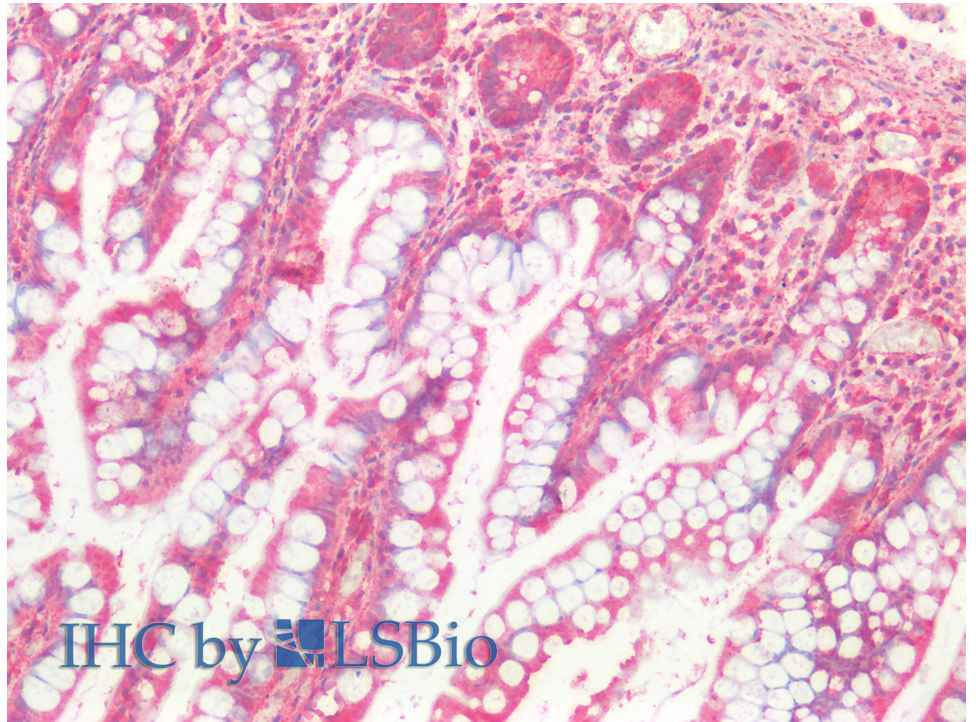
EB06816 Immunofluorescence analysis of paraformaldehyde fixed U2OS cells, permeabilized with 0.15% Triton. Primary incubation 1hr (10ug/ml) followed by Alexa Fluor 488 secondary antibody (2ug/ml), showing vesicle/cytoplasmic staining. The nuclear stain is DAPI (blue). Negative control: Unimmunized goat IgG (10ug/ml) followed by Alexa Fluor 488 secondary antibody (2ug/ml).



EB06816 Immunofluorescence analysis of paraformaldehyde fixed HeLa cells, permeabilized with 0.15% Triton. Primary incubation 1hr (10ug/ml) followed by Alexa Fluor 488 secondary antibody (2ug/ml), showing vesicle/cytoplasmic staining. The nuclear stain is DAPI (blue). Negative control: Unimmunized goat IgG (10ug/ml) followed by Alexa Fluor 488 secondary antibody (2ug/ml).



EB06816 Flow cytometric analysis of paraformaldehyde fixed HepG2cells (blue line), permeabilized with 0.5% Triton. Primary incubation overnight (10ug/ml) followed by Alexa Fluor 488 secondary antibody (1ug/ml). IgG control: Unimmunized goat IgG (black line) followed by Alexa Fluor 488 secondary antibody.



EB06816 (5µg/ml) staining of paraffin embedded Human Small Intestine. Steamed antigen retrieval with citrate buffer pH 6, AP-staining.