



UK Office

Everest Biotech Ltd

Cherwell Innovation Centre
77 Heyford Park
Upper Heyford
Oxfordshire
OX25 5HD
UK

Enquiries:

info@everestbiotech.com

Sales:

sales@everestbiotech.com

Tech support:

support@everestbiotech.com

Tel: +44 (0)1869 238326

Fax: +44 (0)1869 238327

US Office

Everest Biotech c/o Abcore

405 Maple Street, Suite A106
Ramona,
CA 92065
USA

Inquiries:

info@everestbiotech.com

Sales:

usasales@everestbiotech.com

Tech support:

support@everestbiotech.com

Tel: 888-320-4628 (toll-free)

Fax: 888-841-9041

www.everestbiotech.com

**Research Use Only. Not for
diagnostic or therapeutic use.**

EB11975 - Goat Anti-Cathepsin B Antibody

Size: 100µg specific antibody in 200µl



Target Protein

Principal Names: CTSB, cathepsin B, APPS, CPSB, APP secretase, amyloid precursor protein secretase, cathepsin B1, cysteine protease

Official Symbol: CTSB

Accession Number(s): NP_001899.1

Human GeneID(s): [1508](#)

Important Comments: Reported variants represent identical protein: NP_680091.1, NP_680090.1, NP_680092.1, NP_001899.1, NP_680093.1.

Immunogen

Peptide with sequence SDRICHTNAHVSVE, from the internal region of the protein sequence according to NP_001899.1.

Please note the [peptide](#) is available for sale.

Purification and Storage

Purified from goat serum by ammonium sulphate precipitation followed by antigen affinity chromatography using the immunizing peptide.

Supplied at 0.5 mg/ml in Tris saline, 0.02% sodium azide, pH7.3 with 0.5% bovine serum albumin.

Aliquot and store at -20°C. Minimize freezing and thawing.

Applications Tested

Peptide ELISA: antibody detection limit dilution 1:64000.

Western blot: Approx 35kDa band observed in lysates of cell line HepG2 and in Human Lung, Human Colo-rectal carcinoma and Human Brain Glioblastoma cancer lysates (calculated MW of 37.8kDa according to NP_001899.1). Recommended concentration: 0.5-2µg/ml. Primary incubation 1 hour at room temperature.

IHC: Paraffin embedded Human Prostate. Recommended concentration: 5µg/ml.

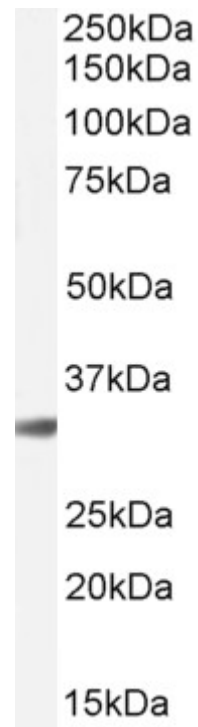
Immunofluorescence: Strong expression of the protein seen in the cytoplasm/ vesicles of HeLa cells. Recommended concentration: 10µg/ml.

Flow Cytometry: Flow cytometric analysis of HeLa cells. Recommended concentration: 10ug/ml.

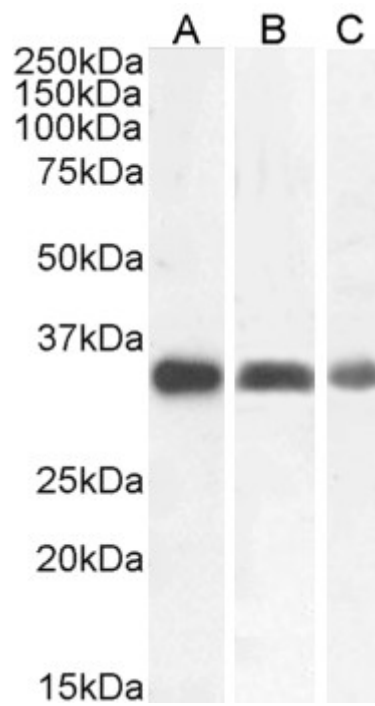
Species Reactivity

Tested: Human

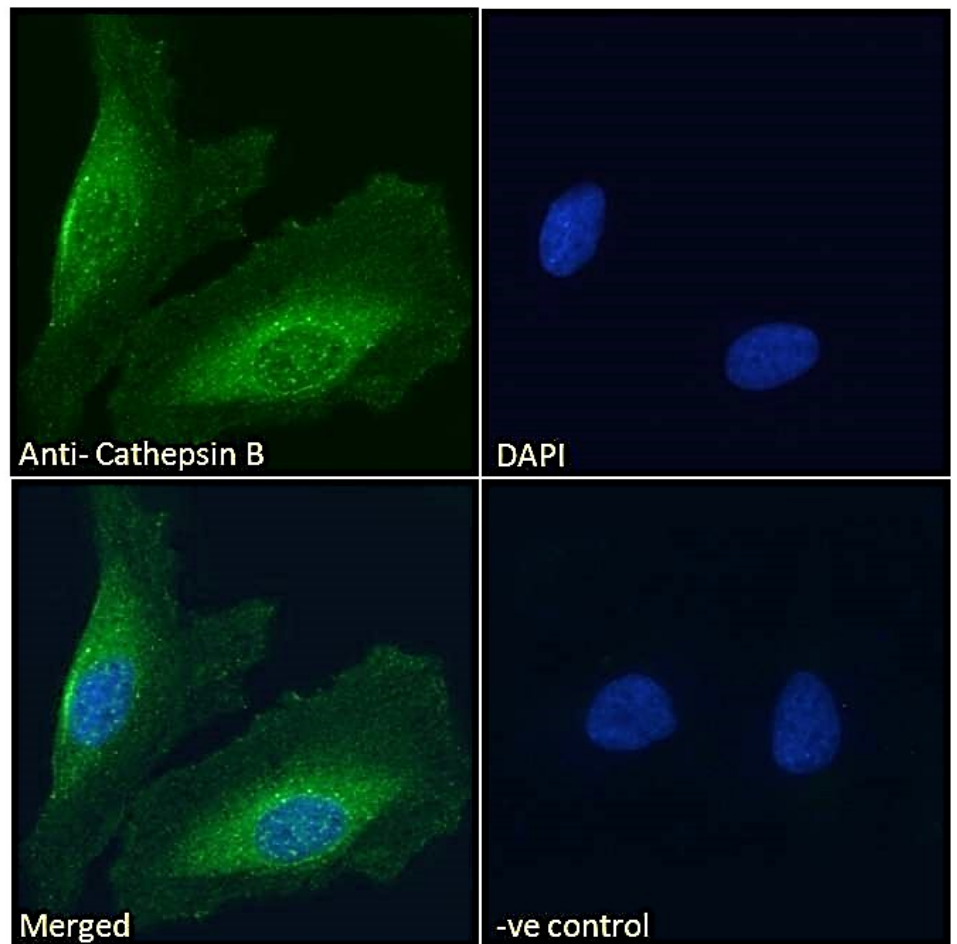
Expected from sequence similarity: Human



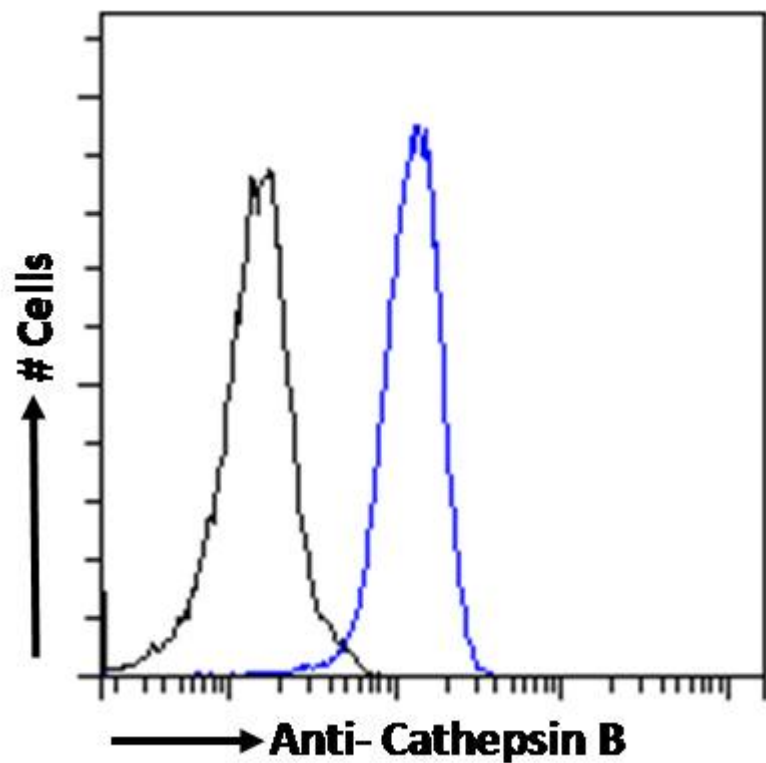
EB11975 (1 μ g/ml) staining of HepG2 cell lysate (35 μ g protein in RIPA buffer). Detected by chemiluminescence.



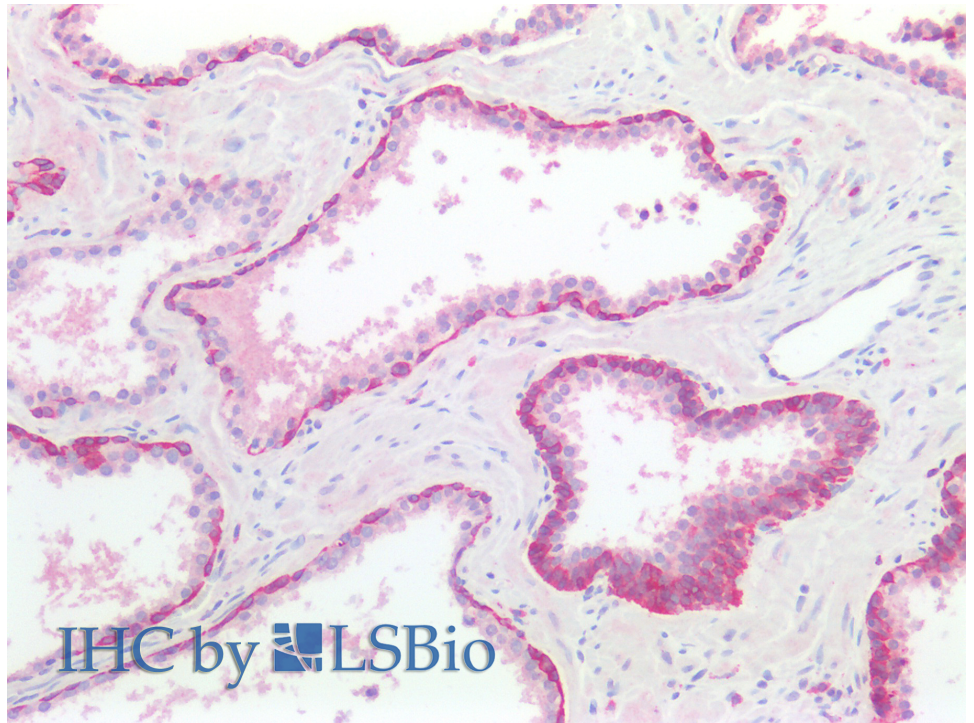
EB11975 (1 μ g/ml) staining of Human Lung (A) and HCORC (B) and (0.5 μ g/ml) HCBGLC (C) lysate (35 μ g protein in RIPA buffer). Detected by chemiluminescence.



EB11975 Immunofluorescence analysis of paraformaldehyde fixed HeLa cells, permeabilized with 0.15% Triton. Primary incubation 1hr (10ug/ml) followed by Alexa Fluor 488 secondary antibody (2ug/ml), showing cytoplasmic/vesicle staining. The nuclear stain is DAPI (blue). Negative control: Unimmunized goat IgG (10ug/ml) followed by Alexa Fluor 488 secondary antibody (2ug/ml).



EB11975 Flow cytometric analysis of paraformaldehyde fixed HeLa cells (blue line), permeabilized with 0.5% Triton. Primary incubation 1hr (10ug/ml) followed by Alexa Fluor 488 secondary antibody (1ug/ml). IgG control: Unimmunized goat IgG (black line) followed by Alexa Fluor 488 secondary antibody.



EB11975 (5µg/ml) staining of paraffin embedded Human Prostate. Steamed antigen retrieval with citrate buffer pH 6, AP-staining.