



## UK Office

### Everest Biotech Ltd

Cherwell Innovation Centre  
77 Heyford Park  
Upper Heyford  
Oxfordshire  
OX25 5HD  
UK

Enquiries:

[info@everestbiotech.com](mailto:info@everestbiotech.com)

Sales:

[sales@everestbiotech.com](mailto:sales@everestbiotech.com)

Tech support:

[support@everestbiotech.com](mailto:support@everestbiotech.com)

Tel: +44 (0)1869 238326

Fax: +44 (0)1869 238327

## US Office

### Everest Biotech c/o Abcore

405 Maple Street, Suite A106  
Ramona,  
CA 92065  
USA

Inquiries:

[info@everestbiotech.com](mailto:info@everestbiotech.com)

Sales:

[usasales@everestbiotech.com](mailto:usasales@everestbiotech.com)

Tech support:

[support@everestbiotech.com](mailto:support@everestbiotech.com)

Tel: 888-320-4628 (toll-free)

Fax: 888-841-9041

[www.everestbiotech.com](http://www.everestbiotech.com)

**Research Use Only. Not for  
diagnostic or therapeutic use.**

## EB07232 - Goat Anti-Casein Kinase 1, delta Antibody

Size: 100µg specific antibody in 200µl



### Target Protein

**Principal Names:** casein kinase 1, delta, HGNC:2452, CSNK1D, HCKID, CKIdelta

**Official Symbol:** CSNK1D

**Accession Number(s):** NP\_001884.2; NP\_620693.1

**Human GeneID(s):** [1453](#)

**Non-Human GeneID(s):** 104318 (mouse), 64462 (rat)

**Important Comments:** This antibody is expected to recognise both reported isoforms (NP\_001884.2 and NP\_620693.1)

### Immunogen

Peptide with sequence C-DREERLRHSRNPATR, from the internal region of the protein sequence according to NP\_001884.2; NP\_620693.1.

Please note the [peptide](#) is available for sale.

### Purification and Storage

Purified from goat serum by ammonium sulphate precipitation followed by antigen affinity chromatography using the immunizing peptide.

Supplied at 0.5 mg/ml in Tris saline, 0.02% sodium azide, pH7.3 with 0.5% bovine serum albumin.

Aliquot and store at -20°C. Minimize freezing and thawing.

### Applications Tested

**Peptide ELISA:** antibody detection limit dilution 1:32000.

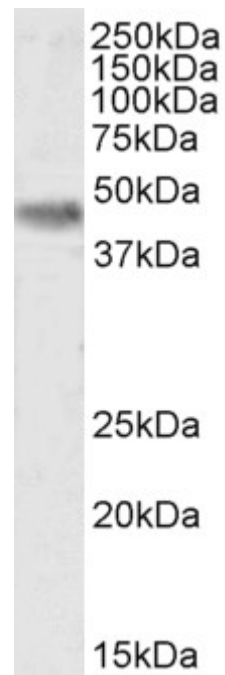
**Western blot:** Approx 48kDa band observed in Mouse Brain lysates and in preliminary testing of U251 cell lysates (calculated MW of 47.3kDa according to Mouse NP\_620690.1). Recommended concentration: 0.1-0.3µg/ml. Primary incubation 1 hour at room temperature.

**Immunofluorescence:** Expression of the protein seen in the Nucleus of U251 cells. Recommended concentration: 10µg/ml.

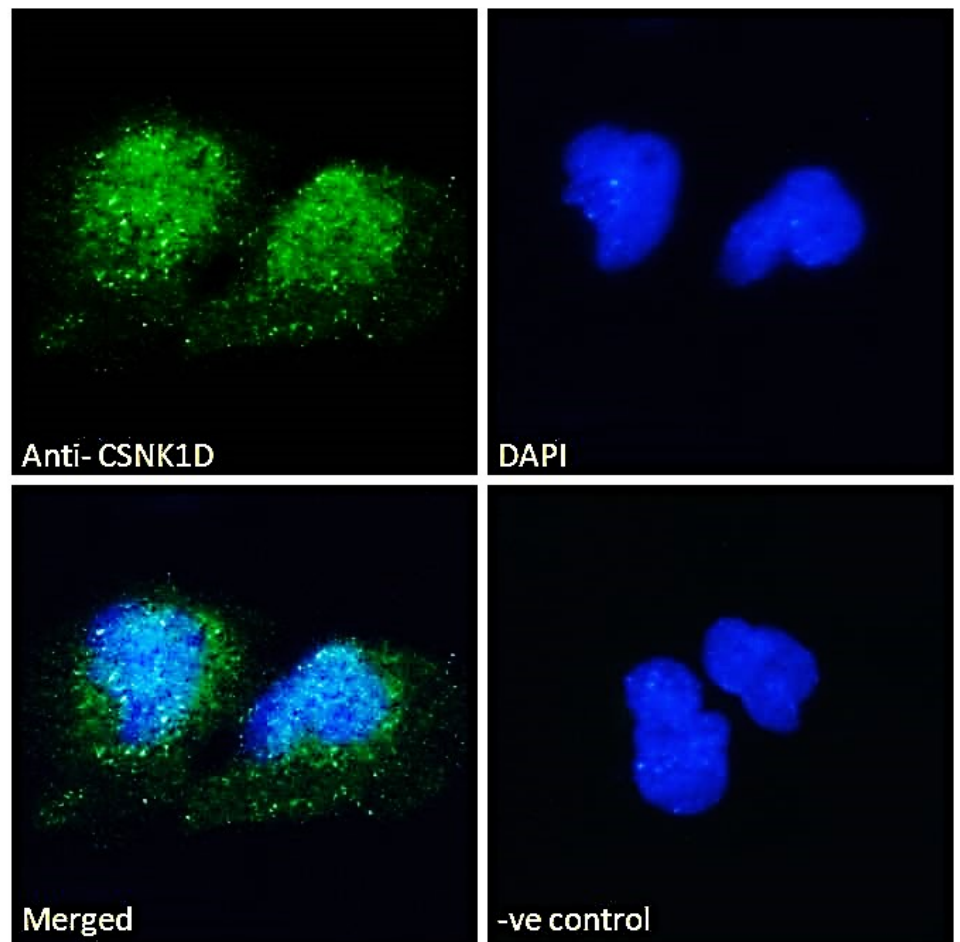
### Species Reactivity

**Tested:** Human, Mouse

**Expected from sequence similarity:** Human, Mouse, Rat, Dog



EB07232 (0.2 $\mu$ g/ml) staining of Mouse Brain lysate (35 $\mu$ g protein in RIPA buffer). Detected by chemiluminescence.



EB07232 Immunofluorescence analysis of paraformaldehyde fixed U251 cells, permeabilized with 0.15% Triton. Primary incubation 1hr (10 $\mu$ g/ml) followed by Alexa Fluor 488 secondary antibody (2 $\mu$ g/ml), showing nuclear staining. The nuclear stain is DAPI (blue). Negative control: Unimmunized goat IgG (10 $\mu$ g/ml) followed by Alexa Fluor 488 secondary antibody (2 $\mu$ g/ml).