



UK Office

Everest Biotech Ltd

Cherwell Innovation Centre
77 Heyford Park
Upper Heyford
Oxfordshire
OX25 5HD
UK

Enquiries:

info@everestbiotech.com

Sales:

sales@everestbiotech.com

Tech support:

support@everestbiotech.com

Tel: +44 (0)1869 238326

Fax: +44 (0)1869 238327

US Office

Everest Biotech c/o Abcore

405 Maple Street, Suite A106
Ramona,
CA 92065
USA

Inquiries:

info@everestbiotech.com

Sales:

usasales@everestbiotech.com

Tech support:

support@everestbiotech.com

Tel: 888-320-4628 (toll-free)

Fax: 888-841-9041

www.everestbiotech.com

**Research Use Only. Not for
diagnostic or therapeutic use.**

EB11989 - Goat Anti-CAPN1 (aa468-481) Antibody

Size: 100µg specific antibody in 200µl



Target Protein

Principal Names: CAPN1, calpain 1, (mu/I) large subunit, CANP, CANP1, CANPL1, muCANP, muCL, CANP 1, calcium-activated neutral proteinase 1, calpain mu-type, calpain, large polypeptide L1, calpain-1 catalytic subunit, calpain-1 large subunit, cell proliferation-inducing gene 30 protein, cell proliferation-inducing protein 30, micromolar-calpain

Official Symbol: CAPN1

Accession Number(s): NP_005177.2

Human GeneID(s): [823](#)

Important Comments: Reported variants represent identical protein: NP_001185797.1, NP_005177.2, NP_001185798.1.

Immunogen

Peptide with sequence C-NASRARSEQFINLR, from the internal region of the protein sequence according to NP_005177.2.

Please note the [peptide](#) is available for sale.

Purification and Storage

Purified from goat serum by ammonium sulphate precipitation followed by antigen affinity chromatography using the immunizing peptide.

Supplied at 0.5 mg/ml in Tris saline, 0.02% sodium azide, pH7.3 with 0.5% bovine serum albumin.

Aliquot and store at -20°C. Minimize freezing and thawing.

Applications Tested

Peptide ELISA: antibody detection limit dilution 1:128000.

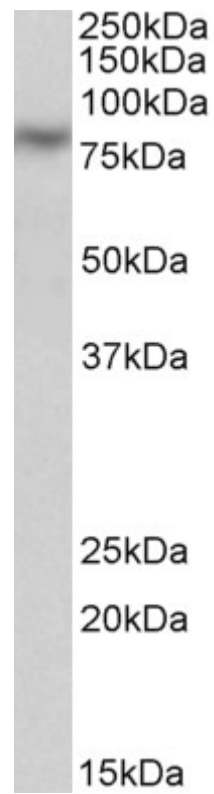
Western blot: Approx 80kDa band observed in Human Kidney lysates (calculated MW of 81.9kDa according to NP_005177.2). Recommended concentration: 0.3-1µg/ml. Primary incubation was 1 hour.

IHC: Paraffin embedded Human Kidney. Recommended concentration: 5µg/ml.

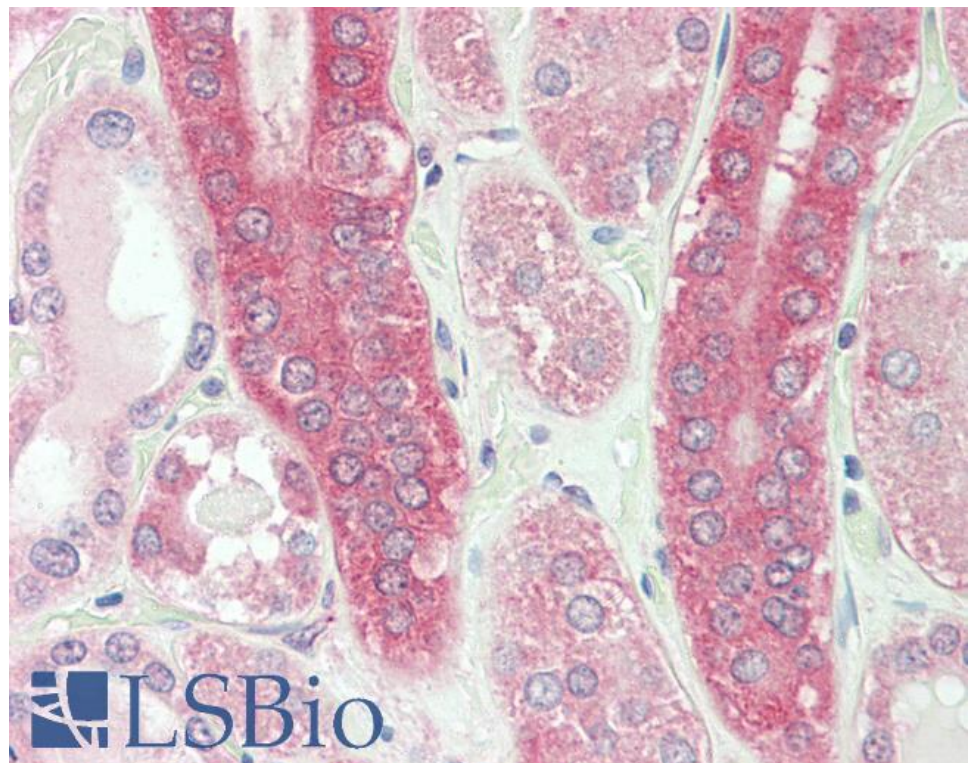
Species Reactivity

Tested: Human

Expected from sequence similarity: Human, Pig, Cow



EB11989 (0.3 μ g/ml) staining of Human Kidney lysate (35 μ g protein in RIPA buffer). Detected by chemiluminescence.



EB11989 (5 μ g/ml) staining of paraffin embedded Human Kidney. Steamed antigen retrieval with citrate buffer Ph 6, AP-staining.