



UK Office

Everest Biotech Ltd

Cherwell Innovation Centre
77 Heyford Park
Upper Heyford
Oxfordshire
OX25 5HD
UK

Enquiries:

info@everestbiotech.com

Sales:

sales@everestbiotech.com

Tech support:

support@everestbiotech.com

Tel: +44 (0)1869 238326

Fax: +44 (0)1869 238327

US Office

Everest Biotech c/o Abcore

405 Maple Street, Suite A106
Ramona,
CA 92065
USA

Inquiries:

info@everestbiotech.com

Sales:

usasales@everestbiotech.com

Tech support:

support@everestbiotech.com

Tel: 888-320-4628 (toll-free)

Fax: 888-841-9041

www.everestbiotech.com

**Research Use Only. Not for
diagnostic or therapeutic use.**

EB06946 - Goat Anti-Cannabinoid Receptor 2 Antibody

Size: 100µg specific antibody in 200µl



Target Protein

Principal Names: cannabinoid receptor 2 (macrophage), HGNC:2160, CNR3, CB2, CX5, OTTHUMP00000044841, CNR2, RP11-4M23.1, testis-dominant CNR2 isoform CB2

Official Symbol: CNR2

Accession Number(s): NP_001832.1

Human GeneID(s): [1269](#)

Immunogen

Peptide with sequence C-TETEDGKITPWP, from the C Terminus of the protein sequence according to NP_001832.1.

Please note the [peptide](#) is available for sale.

Purification and Storage

Purified from goat serum by ammonium sulphate precipitation followed by antigen affinity chromatography using the immunizing peptide.

Supplied at 0.5 mg/ml in Tris saline, 0.02% sodium azide, pH7.3 with 0.5% bovine serum albumin.

Aliquot and store at -20°C. Minimize freezing and thawing.

Applications Tested

Peptide ELISA: antibody detection limit dilution 1:32000.

Western blot: Approx 40kDa band observed in Human Brain (Hippocampus) lysates (calculated MW of 46.2kDa according to NP_001832.1). This molecular weight is routinely observed by other sources. Primary incubation was 1 hour. Recommended concentration: 1.5-4.5µg/ml. This antibody has been successfully used in WB on Human: Fügedi G et al. (2014) PMID: 25444073.

Species Reactivity

Tested: Human

Expected from sequence similarity: Human

Specific Reference

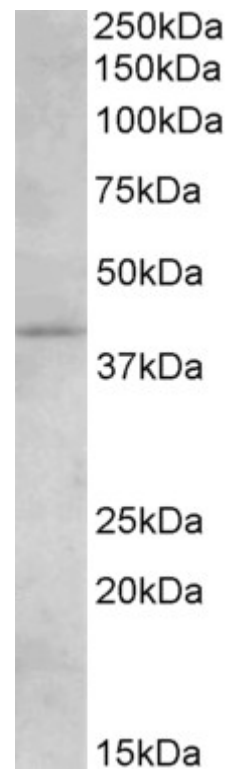
This antibody has been successfully used in Western blot on Human:

Fügedi G, Molnár M, Rigó J Jr, Schönleber J, Kovalszky I, Molvarec A.

Increased placental expression of cannabinoid receptor 1 in preeclampsia: an observational study.

BMC Pregnancy Childbirth. 2014 Dec 2;14:395

PMID: 25444073



EB06946 (1.5µg/ml) staining of Human Brain (Hippocampus) lysate (35µg protein in RIPA buffer). Detected by chemiluminescence.