



UK Office

Everest Biotech Ltd

Cherwell Innovation Centre
77 Heyford Park
Upper Heyford
Oxfordshire
OX25 5HD
UK

Enquiries:

info@everestbiotech.com

Sales:

sales@everestbiotech.com

Tech support:

support@everestbiotech.com

Tel: +44 (0)1869 238326

Fax: +44 (0)1869 238327

US Office

Everest Biotech c/o Abcore

405 Maple Street, Suite A106
Ramona,
CA 92065
USA

Inquiries:

info@everestbiotech.com

Sales:

usasales@everestbiotech.com

Tech support:

support@everestbiotech.com

Tel: 888-320-4628 (toll-free)

Fax: 888-841-9041

www.everestbiotech.com

**Research Use Only. Not for
diagnostic or therapeutic use.**

EB06690-T - Goat Anti-APOE Antibody - Trial

Size: 20µg specific antibody in 40µl



Target Protein

Principal Names: APOE, AD2, MGC1571, apoprotein, apolipoprotein E, apolipoprotein E3, Alzheimer disease 2 (APOE*E4-associated, late onset), LPG

Official Symbol: APOE

Accession Number(s): NP_000032.1

Human GeneID(s): [348](#)

Immunogen

Peptide with sequence C-VGTSAAPVPSDNH, from the C Terminus of the protein sequence according to NP_000032.1.

Please note the [peptide](#) is available for sale.

Purification and Storage

Purified from goat serum by ammonium sulphate precipitation followed by antigen affinity chromatography using the immunizing peptide.

Supplied at 0.5 mg/ml in Tris saline, 0.02% sodium azide, pH7.3 with 0.5% bovine serum albumin.

Aliquot and store at -20°C. Minimize freezing and thawing.

Applications Tested

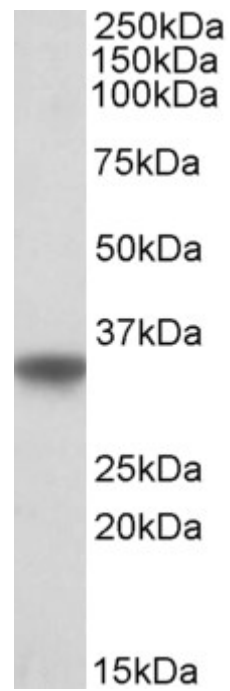
Peptide ELISA: antibody detection limit dilution 1:128000.

Western blot: Approx 36kDa band observed in Human Brain (Hippocampus) lysates (calculated MW of 36.2kDa according to NP_000032.1). Recommended concentration: 0.05-0.1µg/ml. Primary incubation was 1 hour.

Species Reactivity

Tested: Human

Expected from sequence similarity: Human



EB06690 (0.05 μ g/ml) staining of Human Brain (Hippocampus) lysate (35 μ g protein in RIPA buffer). Detected by chemiluminescence.