



UK Office

Everest Biotech Ltd

Cherwell Innovation Centre
77 Heyford Park
Upper Heyford
Oxfordshire
OX25 5HD
UK

Enquiries:

info@everestbiotech.com

Sales:

sales@everestbiotech.com

Tech support:

support@everestbiotech.com

Tel: +44 (0)1869 238326

Fax: +44 (0)1869 238327

US Office

Everest Biotech c/o Abcore

405 Maple Street, Suite A106
Ramona,
CA 92065
USA

Inquiries:

info@everestbiotech.com

Sales:

usasales@everestbiotech.com

Tech support:

support@everestbiotech.com

Tel: 888-320-4628 (toll-free)

Fax: 888-841-9041

www.everestbiotech.com

**Research Use Only. Not for
diagnostic or therapeutic use.**

EB05865 - Goat Anti-ALS2CR2 / ILPIP Antibody

Size: 100µg specific antibody in 200µl



Target Protein

Principal Names: STRADB, ALS2CR2, ILPIP, PAPK, ILPIPA, CALS-21, PRO1038, amyotrophic lateral sclerosis 2 (juvenile) chromosome region, candidate 2, ILP-interacting protein ILPIPA, STE20-related kinase adaptor beta, STRAD beta, pseudokinase ALS2CR2

Official Symbol: STRADB

Accession Number(s): NP_061041.2; AAF71042.1

Human GeneID(s): [55437](#)

Important Comments: This is expected to recognise both human isoforms: ILPIP-alpha (NP_061041.2) and ILPIP-beta (AAF71042.1).

Immunogen

Peptide with sequence CDFPDEKDSYWEF, from the C Terminus of the protein sequence according to NP_061041.2; AAF71042.1.

Please note the [peptide](#) is available for sale.

Purification and Storage

Purified from goat serum by ammonium sulphate precipitation followed by antigen affinity chromatography using the immunizing peptide.

Supplied at 0.5 mg/ml in Tris saline, 0.02% sodium azide, pH7.3 with 0.5% bovine serum albumin.

Aliquot and store at -20°C. Minimize freezing and thawing.

Applications Tested

Peptide ELISA: antibody detection limit dilution 1:32000.

Western blot: Approx 35kDa band observed in Human Heart, Liver and Muscle lysates (calculated MW of 47.0kDa according to NP_061041.2 (alpha isoform) and 31.2kDa according to AAF71042.1 (beta isoform). In transfected HEK293 transiently expressing ILPIP a band of approx. 48kDa is observed. This band is not observed in the non-transfected HEK293. Recommended concentration: 1-3µg/ml.

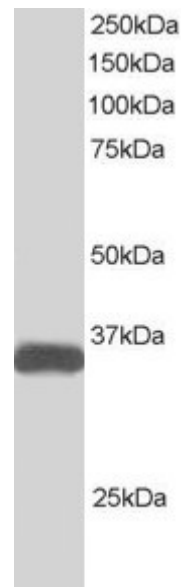
IHC: In paraffin embedded Human Heart shows staining of myocardial fibres in transverse section. Recommended concentration: 3-5µg/ml.

Immunofluorescence: Strong expression of the protein seen in the nuclei and cytoplasm of U251 cells. Recommended concentration: 10µg/ml.

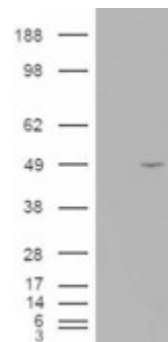
Species Reactivity

Tested: Human

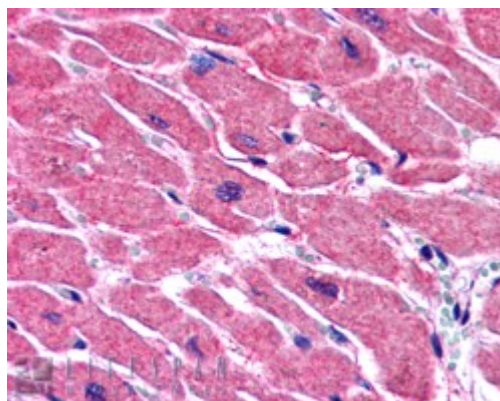
Expected from sequence similarity: Human, Dog, Cow



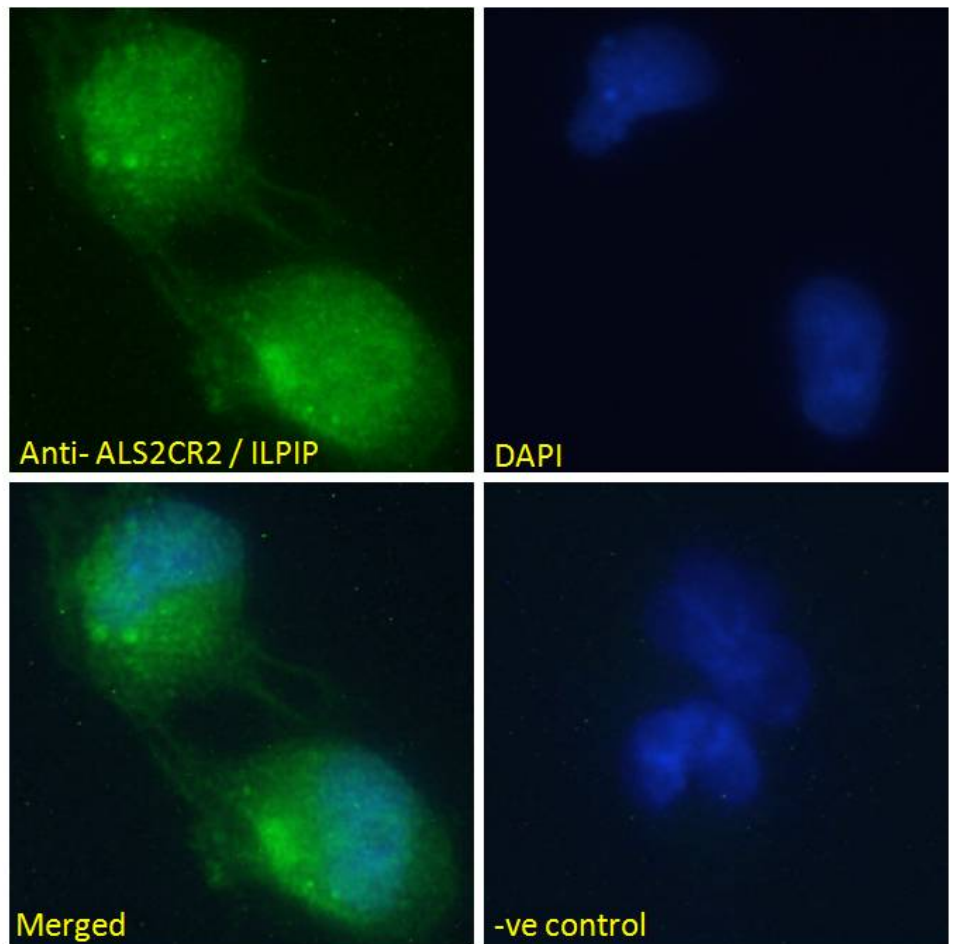
EB05865 (1 μ g/ml) staining of Human Heart lysate (35 μ g protein in RIPA buffer). Primary incubation was 1 hour. Detected by chemiluminescence.



HEK293 overexpressing ILPIP (RC203432) and probed with EB05865 (mock transfection in first lane), tested by Origene.



EB05865 (3.8 μ g/ml) staining of paraffin embedded Human Heart. Steamed antigen retrieval with citrate buffer pH 6, AP-staining.



EB05865 Immunofluorescence analysis of paraformaldehyde fixed U251 cells, permeabilized with 0.15% Triton. Primary incubation 1hr (10ug/ml) followed by Alexa Fluor 488 secondary antibody (2ug/ml), showing nuclear and cytoplasmic staining. The nuclear stain is DAPI (blue). Negative control: Unimmunized goat IgG (10ug/ml) followed by Alexa Fluor 488 secondary antibody (2ug/ml).