



UK Office

Everest Biotech Ltd

Cherwell Innovation Centre
77 Heyford Park
Upper Heyford
Oxfordshire
OX25 5HD
UK

Enquiries:

info@everestbiotech.com

Sales:

sales@everestbiotech.com

Tech support:

support@everestbiotech.com

Tel: +44 (0)1869 238326

Fax: +44 (0)1869 238327

US Office

Everest Biotech c/o Abcore

405 Maple Street, Suite A106
Ramona,
CA 92065
USA

Inquiries:

info@everestbiotech.com

Sales:

usasales@everestbiotech.com

Tech support:

support@everestbiotech.com

Tel: 888-320-4628 (toll-free)

Fax: 888-841-9041

www.everestbiotech.com

**Research Use Only. Not for
diagnostic or therapeutic use.**

EB07174 - Goat Anti-AIF1 / IBA1 (isoform 3) Antibody

Size: 100µg specific antibody in 200µl



Target Protein

Principal Names: AIF1, IBA1, allograft inflammatory factor 1, DASS-82G15.2, AIF-1, IRT-1, Em:AF129756.17, interferon gamma responsive transcript, ionized calcium-binding adapter molecule

Official Symbol: AIF1

Accession Number(s): NP_001614.3

Human GeneID(s): [199](#)

Non-Human GeneID(s): 11629 (mouse)

Important Comments: This antibody is expected to recognise isoform 3 (NP_001614.3) only.

Immunogen

Peptide with sequence C-NKQFLDDPKYSSDED, from the internal region of the protein sequence according to NP_001614.3.

Please note the [peptide](#) is available for sale.

Purification and Storage

Purified from goat serum by ammonium sulphate precipitation followed by antigen affinity chromatography using the immunizing peptide.

Supplied at 0.5 mg/ml in Tris saline, 0.02% sodium azide, pH7.3 with 0.5% bovine serum albumin.

Aliquot and store at -20°C. Minimize freezing and thawing.

Applications Tested

Peptide ELISA: antibody detection limit dilution 1:8000.

IHC: Paraffin embedded Human Lung and Brain (Cortex). Recommended concentration: 5-6µg/ml.

Immunofluorescence: Strong expression of the protein seen in the cytoplasm and plasma membrane of U937, Caco-2 and U251 cells. Recommended concentration: 10µg/ml.

Flow Cytometry: Flow cytometric analysis of K562 cells. Recommended concentration: 10ug/ml.

Species Reactivity

Tested: Human

Expected from sequence similarity: Human, Mouse, Dog

Specific Reference

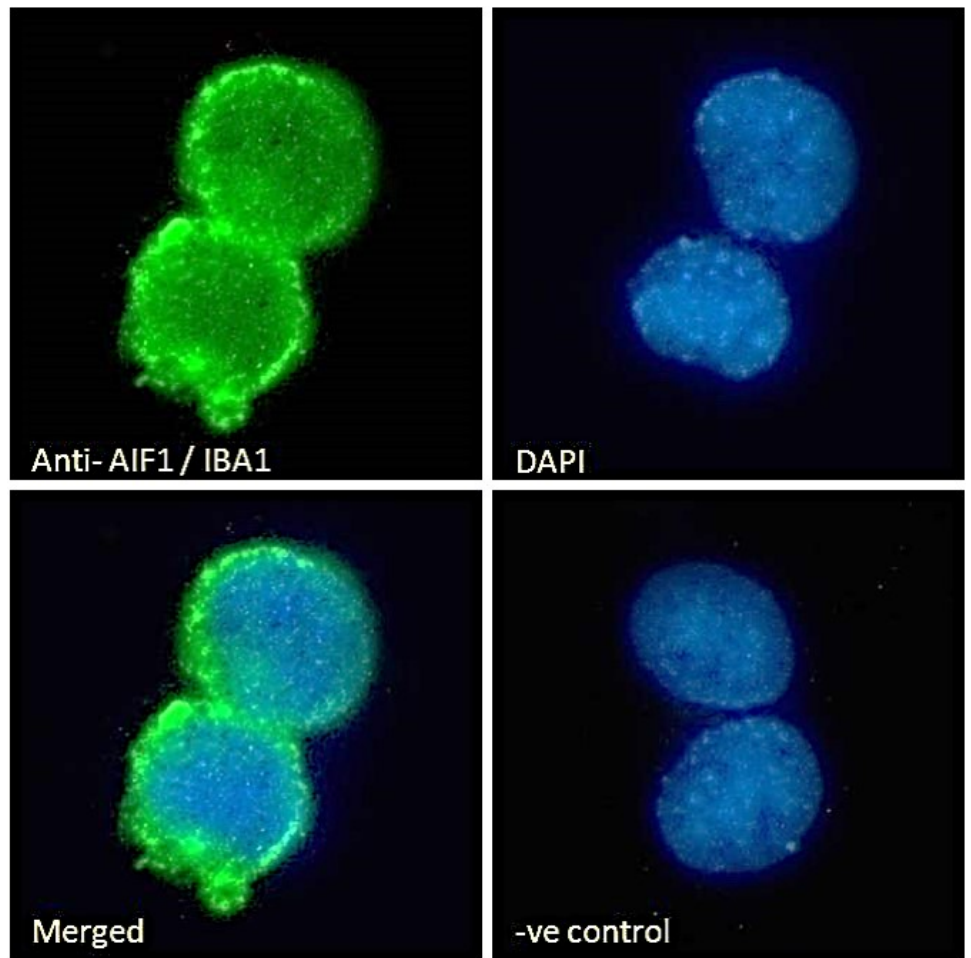
This antibody (previous batch) has been successfully used in IHC on Rat:

Joshua P. Thaler, Chun-Xia Yi, Ellen A. Schur, Stephan J. Guyenet, Bang H. Hwang, Marcelo O. Dietrich, Xiaolin Zhao, David A. Sarruf, Vitaly Izgur, Kenneth R. Maravilla, Hong T. Nguyen, Jonathan D. Fischer, Miles E. Matsen, Brent E. Wisse, Gregory J. Morton, Tamas L. Horvath, Denis G. Baskin, Matthias H. Tschöp, and Michael W. Schwartz

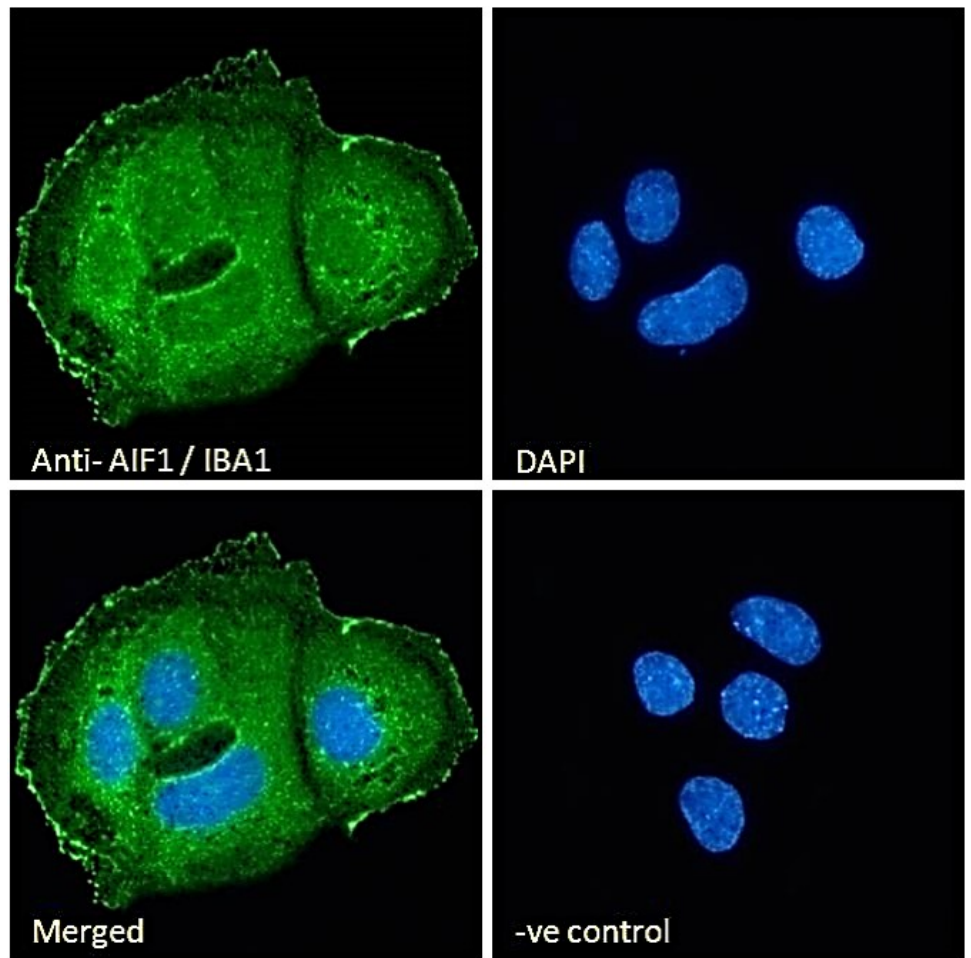
Obesity is associated with hypothalamic injury in rodents and humans.

J Clin Invest. 2012 Jan 3; 122(1): 153-162.

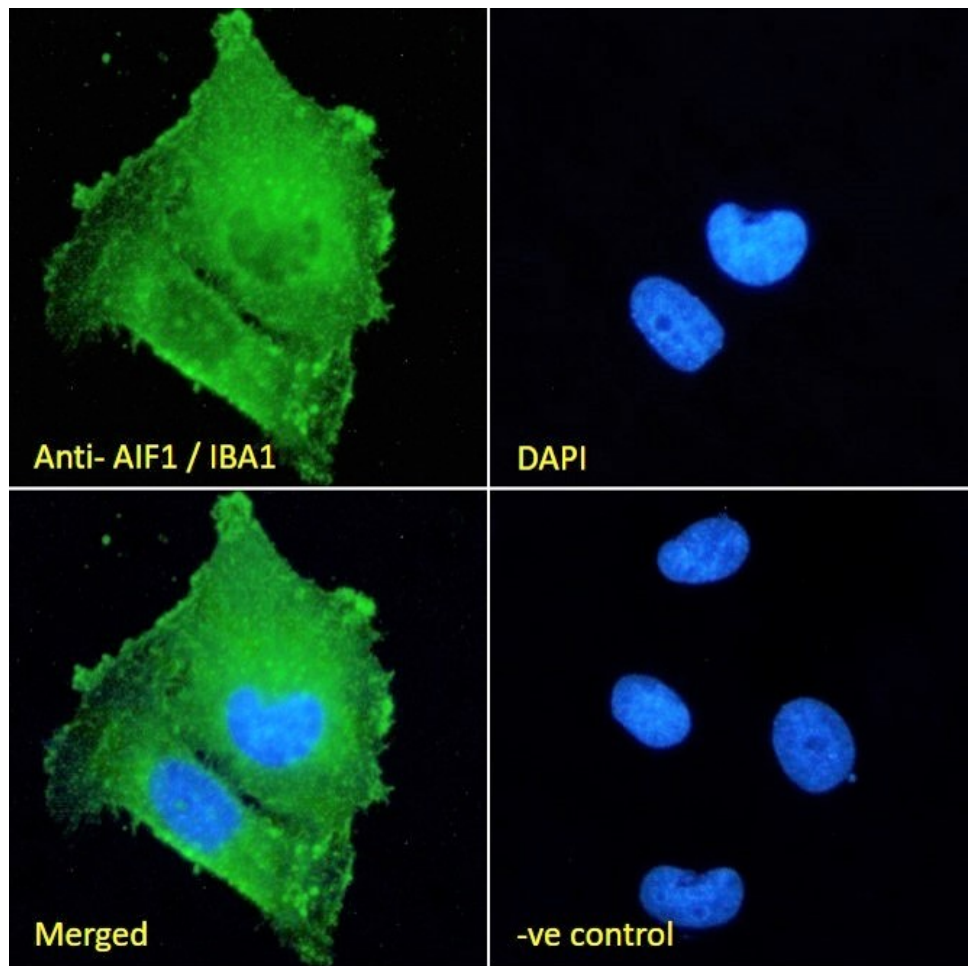
PMID: 22201683



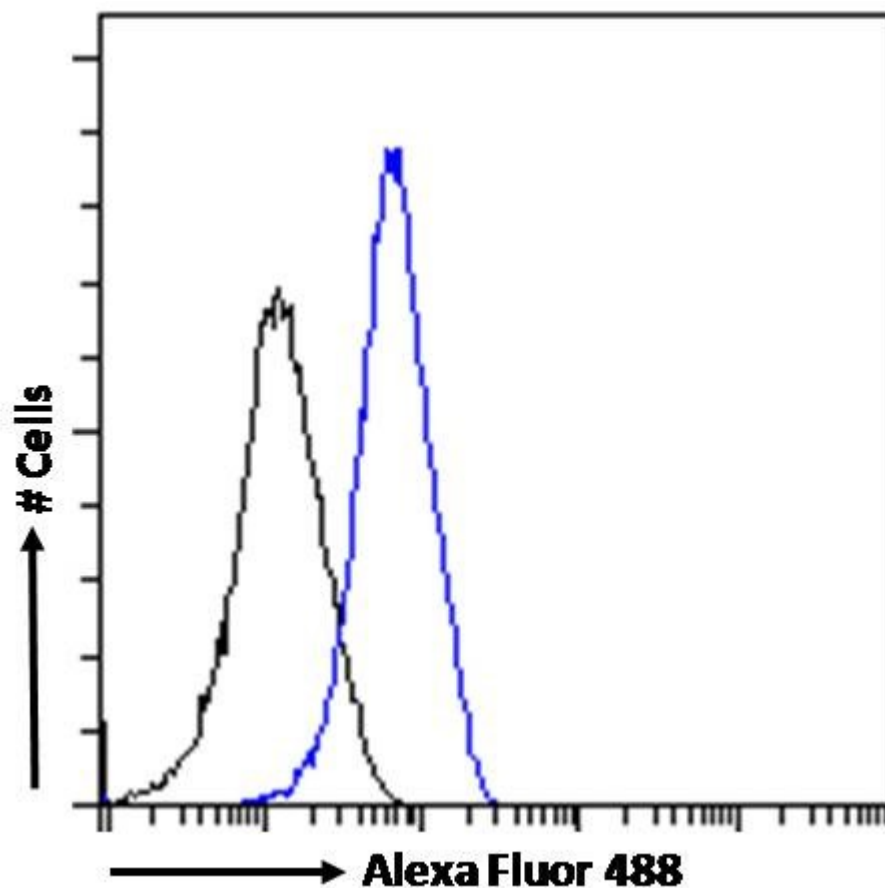
EB07174 Immunofluorescence analysis of paraformaldehyde fixed U937 cells immobilized on Shi-fix™ coverslip, permeabilized with 0.15% Triton. Primary incubation 1hr (10ug/ml) followed by Alexa Fluor 488 secondary antibody (2ug/ml), showing plasma membrane and cytoplasmic staining. The nuclear stain is DAPI (blue). Negative control: Unimmunized goat IgG (10ug/ml) followed by Alexa Fluor 488 secondary antibody (2ug/ml).



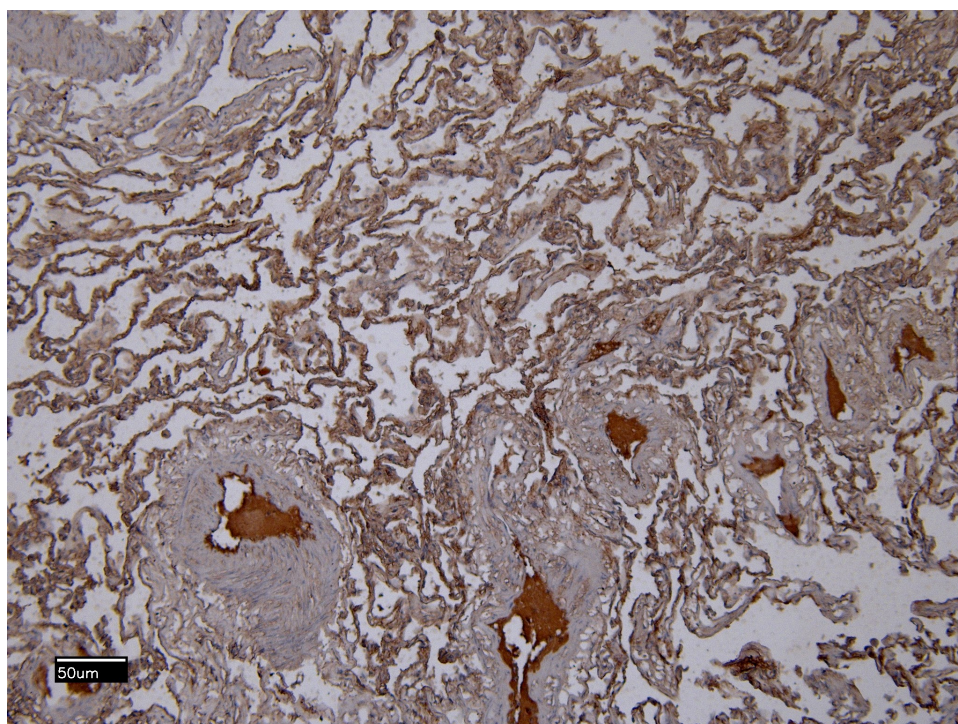
EB07174 Immunofluorescence analysis of paraformaldehyde fixed CaCo-2 cells immobilized on Shi-fix™ coverslip, permeabilized with 0.15% Triton. Primary incubation 1hr (10ug/ml) followed by Alexa Fluor 488 secondary antibody (2ug/ml), showing plasma membrane and cytoplasmic staining. The nuclear stain is DAPI (blue). Negative control: Unimmunized goat IgG (10ug/ml) followed by Alexa Fluor 488 secondary antibody (2ug/ml).



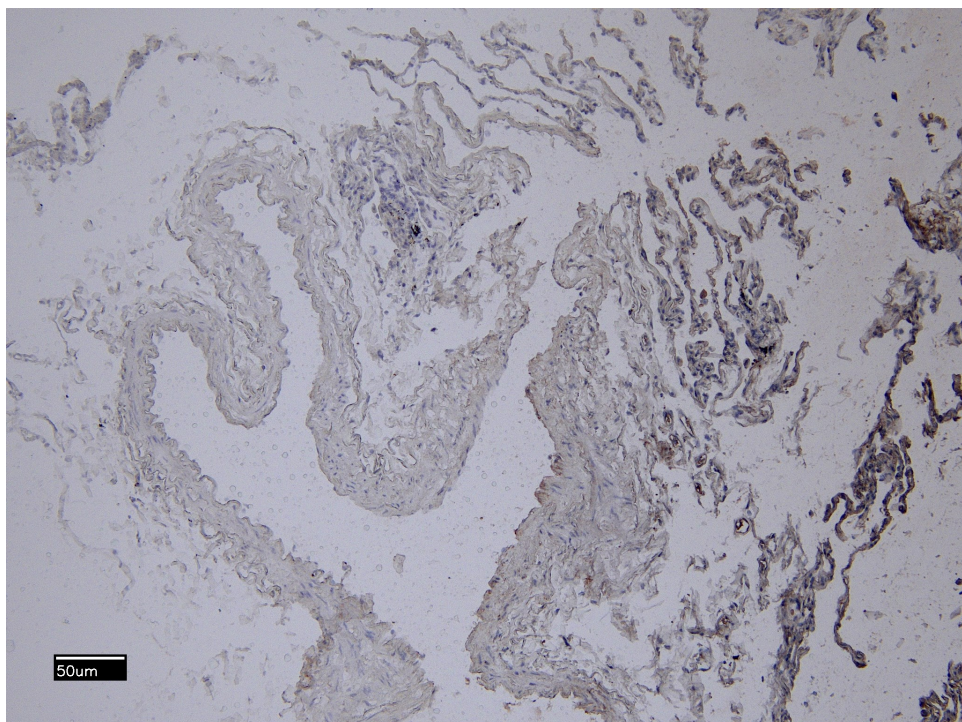
EB07174 Immunofluorescence analysis of paraformaldehyde fixed U251 cells, permeabilized with 0.15% Triton. Primary incubation 1hr (10ug/ml) followed by Alexa Fluor 488 secondary antibody (2ug/ml), showing membrane and cytoplasmic staining. The nuclear stain is DAPI (blue). Negative control: Unimmunized goat IgG (10ug/ml) followed by Alexa Fluor 488 secondary antibody (2ug/ml).



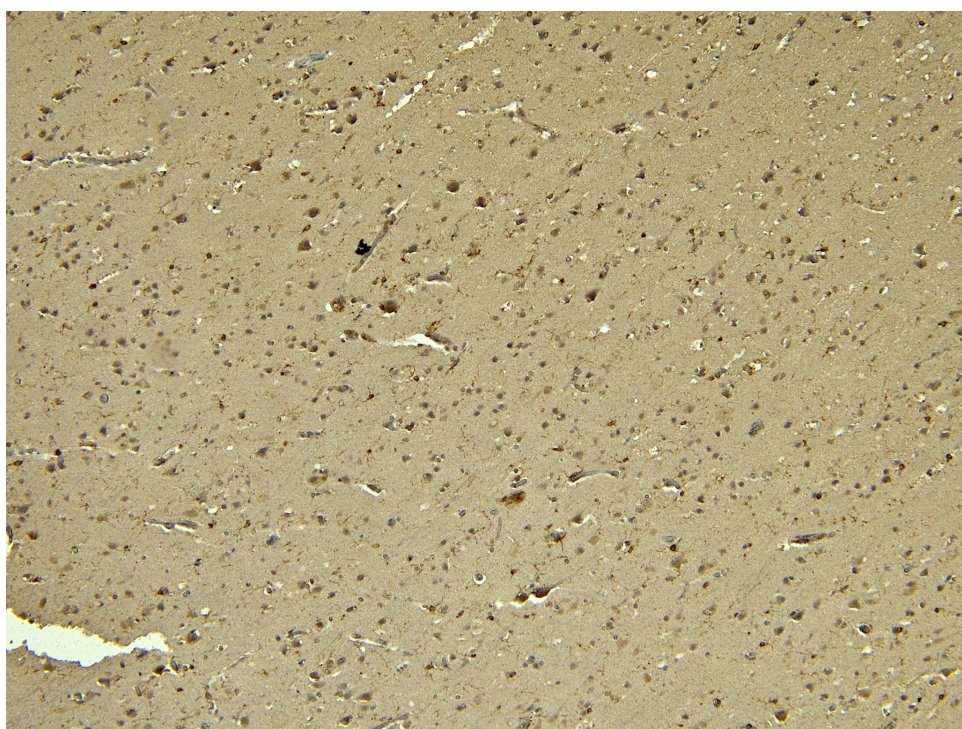
EB07174 Flow cytometric analysis of paraformaldehyde fixed K562 cells (blue line), permeabilized with 0.5% Triton. Primary incubation 1hr (10ug/ml) followed by Alexa Fluor 488 secondary antibody (1ug/ml) .IgG control: Unimmunized goat IgG (black line) followed by Alexa Fluor 488 secondary antibody.



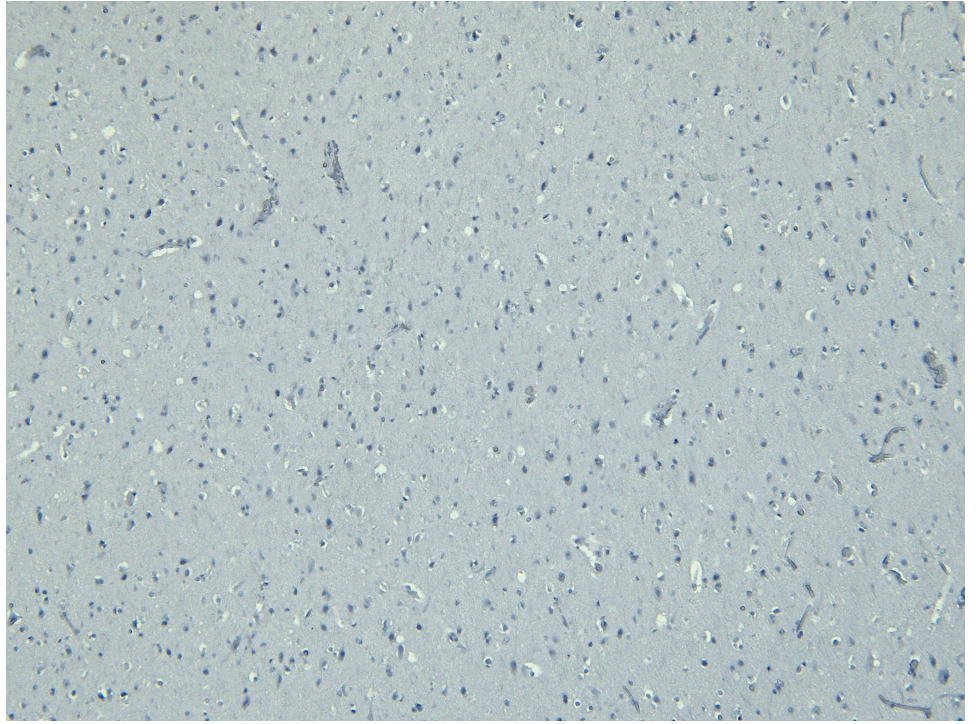
EB07174 (6µg/ml) staining of paraffin embedded Human Lung. Heat induced antigen retrieval with citrate buffer Ph 6, HRP-staining.



EB07174 Negative Control showing staining of paraffin embedded Human Lung, with no primary antibody.



EB07174 (5µg/ml) staining of paraffin embedded Human Cortex. Heat induced antigen retrieval with citrate buffer pH 6, HRP-staining.



EB07174 Negative Control showing staining of paraffin embedded Human Cortex, with no primary antibody.