



UK Office

Everest Biotech Ltd

Cherwell Innovation Centre
77 Heyford Park
Upper Heyford
Oxfordshire
OX25 5HD
UK

Enquiries:

info@everestbiotech.com

Sales:

sales@everestbiotech.com

Tech support:

support@everestbiotech.com

Tel: +44 (0)1869 238326

Fax: +44 (0)1869 238327

US Office

Everest Biotech c/o Abcore

405 Maple Street, Suite A106
Ramona,
CA 92065
USA

Inquiries:

info@everestbiotech.com

Sales:

usasales@everestbiotech.com

Tech support:

support@everestbiotech.com

Tel: 888-320-4628 (toll-free)

Fax: 888-841-9041

www.everestbiotech.com

**Research Use Only. Not for
diagnostic or therapeutic use.**

EB07446 - Goat Anti-AGTR1 / AT1 Antibody

Size: 100µg specific antibody in 200µl



Target Protein

Principal Names: AGTR1, AT1, angiotensin II receptor, type 1, AG2S, AGTR1A, AGTR1B, AT1B, AT2R1, AT2R1A, AT2R1B, HAT1R, angiotensin receptor 1, angiotensin receptor 1B, type-1B angiotensin II receptor

Official Symbol: AGTR1

Accession Number(s): NP_000676.1; NP_004826.2; NP_033611.1; NP_114038.1; NP_114438.1

Human GeneID(s): [185](#)

Non-Human GeneID(s): 11607 (mouse), 24180 (rat)

Important Comments: All reported variants represent identical protein (NP_000676.1, NP_004826.2, NP_033611.1, NP_114038.1 and NP_114438.1).

Immunogen

Peptide with sequence C-EIQKNKPRNDDIFK, from the internal region of the protein sequence according to NP_000676.1; NP_004826.2; NP_033611.1; NP_114038.1; NP_114438.1.

Please note the [peptide](#) is available for sale.

Purification and Storage

Purified from goat serum by ammonium sulphate precipitation followed by antigen affinity chromatography using the immunizing peptide.

Supplied at 0.5 mg/ml in Tris saline, 0.02% sodium azide, pH7.3 with 0.5% bovine serum albumin.

Aliquot and store at -20°C. Minimize freezing and thawing.

Applications Tested

Peptide ELISA: antibody detection limit dilution 1:32000.

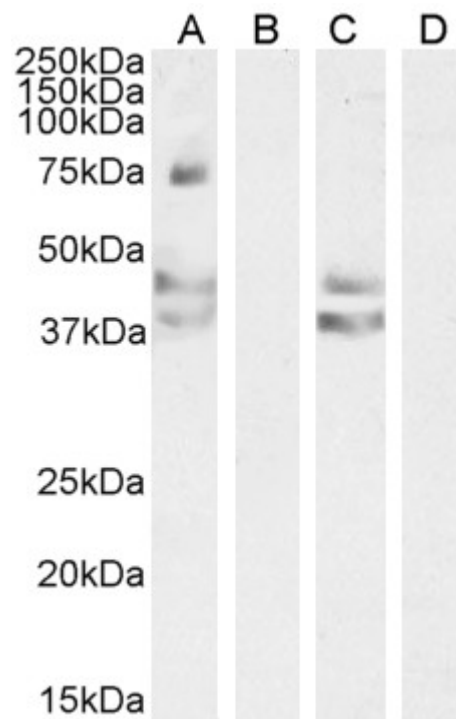
Western blot: Approx 38kDa band observed in Human and Mouse Liver lysates (calculated MW of 41.1kDa according to Human NP_000676.1 and 40.9kDa according to Mouse NP_796296.1) Additional bands of unknown identity were also observed at 45 and 75kDa and were successfully blocked by incubation with the immunizing peptide.

Recommended concentration: 0.1-0.3µg/ml. Primary incubation 1 hour at room temperature. Preliminary testing was unsuccessful on Rat Liver for this particular batch.

Species Reactivity

Tested: Human, Mouse

Expected from sequence similarity: Human, Mouse



EB07446 (0.2 μ g/ml) staining of Human Liver (A) + peptide (B), Mouse Liver (C) + peptide (D) lysate (35 μ g protein in RIPA buffer). Detected by chemiluminescence.