



UK Office

Everest Biotech Ltd

Cherwell Innovation Centre
77 Heyford Park
Upper Heyford
Oxfordshire
OX25 5HD
UK

Enquiries:

info@everestbiotech.com

Sales:

sales@everestbiotech.com

Tech support:

support@everestbiotech.com

Tel: +44 (0)1869 238326

Fax: +44 (0)1869 238327

US Office

Everest Biotech c/o Abcore

405 Maple Street, Suite A106
Ramona,
CA 92065
USA

Inquiries:

info@everestbiotech.com

Sales:

usasales@everestbiotech.com

Tech support:

support@everestbiotech.com

Tel: 888-320-4628 (toll-free)

Fax: 888-841-9041

www.everestbiotech.com

**Research Use Only. Not for
diagnostic or therapeutic use.**

EB08783 - Goat Anti-ABHD12 Antibody

Size: 100µg specific antibody in 200µl



Target Protein

Principal Names: ABHD12, abhydrolase domain containing 12, ABHD12A, BEM46L2, C20orf22, DKFZP434P106, dJ965G21.2

Official Symbol: ABHD12

Accession Number(s): NP_001035937.1; NP_056415.1

Human GeneID(s): [26090](#)

Non-Human GeneID(s): 76192 (mouse), 499913 (rat)

Important Comments: This antibody is expected to recognize isoform a (NP_001035937.1) only.

Immunogen

Peptide with sequence C-REFLGKSEPEHQH, from the C Terminus of the protein sequence according to NP_001035937.1; NP_056415.1.

Please note the [peptide](#) is available for sale.

Purification and Storage

Purified from goat serum by ammonium sulphate precipitation followed by antigen affinity chromatography using the immunizing peptide.

Supplied at 0.5 mg/ml in Tris saline, 0.02% sodium azide, pH7.3 with 0.5% bovine serum albumin.

Aliquot and store at -20°C. Minimize freezing and thawing.

Applications Tested

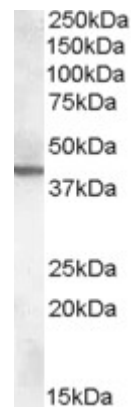
Peptide ELISA: antibody detection limit dilution 1:32000.

Western blot: Approx. 40kDa band observed in Mouse Brain and Rat Brain lysates (calculated MW of 45.1kDa according to Human NP_001035937.1 and of 45.3kDa according to Mouse NP_077785.2). Recommended concentration: 0.3-1µg/ml.

Species Reactivity

Tested: Mouse, Rat

Expected from sequence similarity: Human, Mouse, Rat



EB08783 (0.3 μ g/ ml) staining of Mouse Brain lysate (35 μ g/ protein in RIPA buffer). Primary incubation was 1 hour. Detected by chemiluminescence.