



## UK Office

### Everest Biotech Ltd

Cherwell Innovation Centre  
77 Heyford Park  
Upper Heyford  
Oxfordshire  
OX25 5HD  
UK

Enquiries:

[info@everestbiotech.com](mailto:info@everestbiotech.com)

Sales:

[sales@everestbiotech.com](mailto:sales@everestbiotech.com)

Tech support:

[support@everestbiotech.com](mailto:support@everestbiotech.com)

Tel: +44 (0)1869 238326

Fax: +44 (0)1869 238327

## US Office

### Everest Biotech c/o Abcore

405 Maple Street, Suite A106  
Ramona,  
CA 92065  
USA

Inquiries:

[info@everestbiotech.com](mailto:info@everestbiotech.com)

Sales:

[usasales@everestbiotech.com](mailto:usasales@everestbiotech.com)

Tech support:

[support@everestbiotech.com](mailto:support@everestbiotech.com)

Tel: 888-320-4628 (toll-free)

Fax: 888-841-9041

[www.everestbiotech.com](http://www.everestbiotech.com)

**Research Use Only. Not for  
diagnostic or therapeutic use.**

## EB08615 - Goat Anti-ABCA4 Antibody

Size: 100µg specific antibody in 200µl



### Target Protein

**Principal Names:** ABCA4, ATP-binding cassette, sub-family A (ABC1), member 4, ABC10, ABCR, ARMD2, CORD3, DKFZp781N1972, FFM, RMP, RP19, STGD, STGD1, ATP binding cassette transporter, ATP-binding cassette, sub-family A member 4, ATP-binding transporter, retina-specific, retina-specific ABC transporter, rim protein

**Official Symbol:** ABCA4

**Accession Number(s):** NP\_000341.2

**Human GeneID(s):** [24](#)

### Immunogen

Peptide with sequence C-KQQTESHDLPLHPR, from the C Terminus of the protein sequence according to NP\_000341.2.

Please note the [peptide](#) is available for sale.

### Purification and Storage

Purified from goat serum by ammonium sulphate precipitation followed by antigen affinity chromatography using the immunizing peptide.

Supplied at 0.5 mg/ml in Tris saline, 0.02% sodium azide, pH7.3 with 0.5% bovine serum albumin.

Aliquot and store at -20°C. Minimize freezing and thawing.

### Applications Tested

**Peptide ELISA:** antibody detection limit dilution 1:128000.

**Immunofluorescence:** Strong expression of the protein seen in the Endoplasmic Reticulum of MCF7 and HeLa cells. Recommended concentration: 10µg/ml. This antibody has been successfully used in IF on Mouse, PMID: 32371886.

### Species Reactivity

**Tested:** Human, Mouse

**Expected from sequence similarity:** Human, Dog

### Specific References

**This antibody has been successfully used in the following paper:**

Anna Matynia, Jun Wang, Sangbae Kim, Yumei Li, Anupama Dimashkie, Zhichun Jiang, Jane Hu, Samuel P. Strom, Roxana A. Radu, Rui Chen, and Michael B. Gorin  
Assessing Variant Causality and Severity Using Retinal Pigment Epithelial Cells Derived from Stargardt Disease Patients.

Transl Vis Sci Technol. 2022 Mar 2;11(3):33.

PMID: 35348597

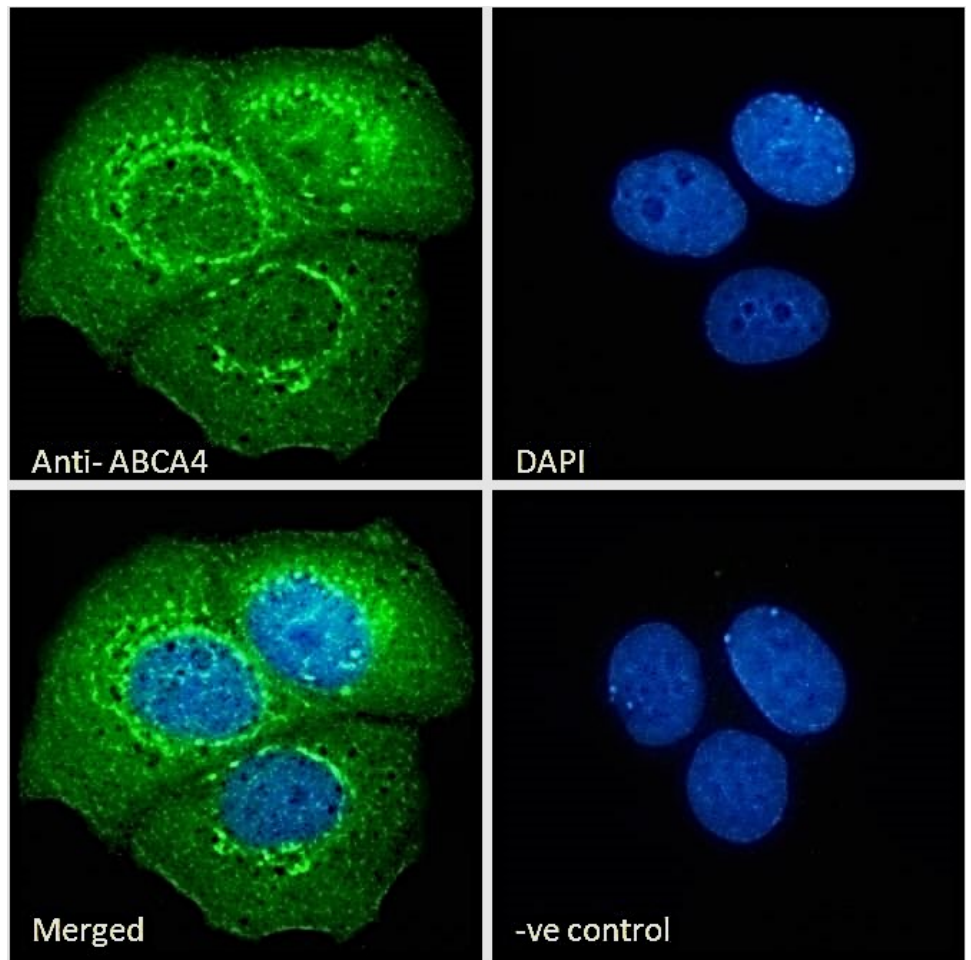
**This antibody has been successfully used in IF on Mouse:**

Tylor R Lewis, Camilla R Shores, Martha A Cady, Ying Hao, Vadim Y Arshavsky, Marie E Burns

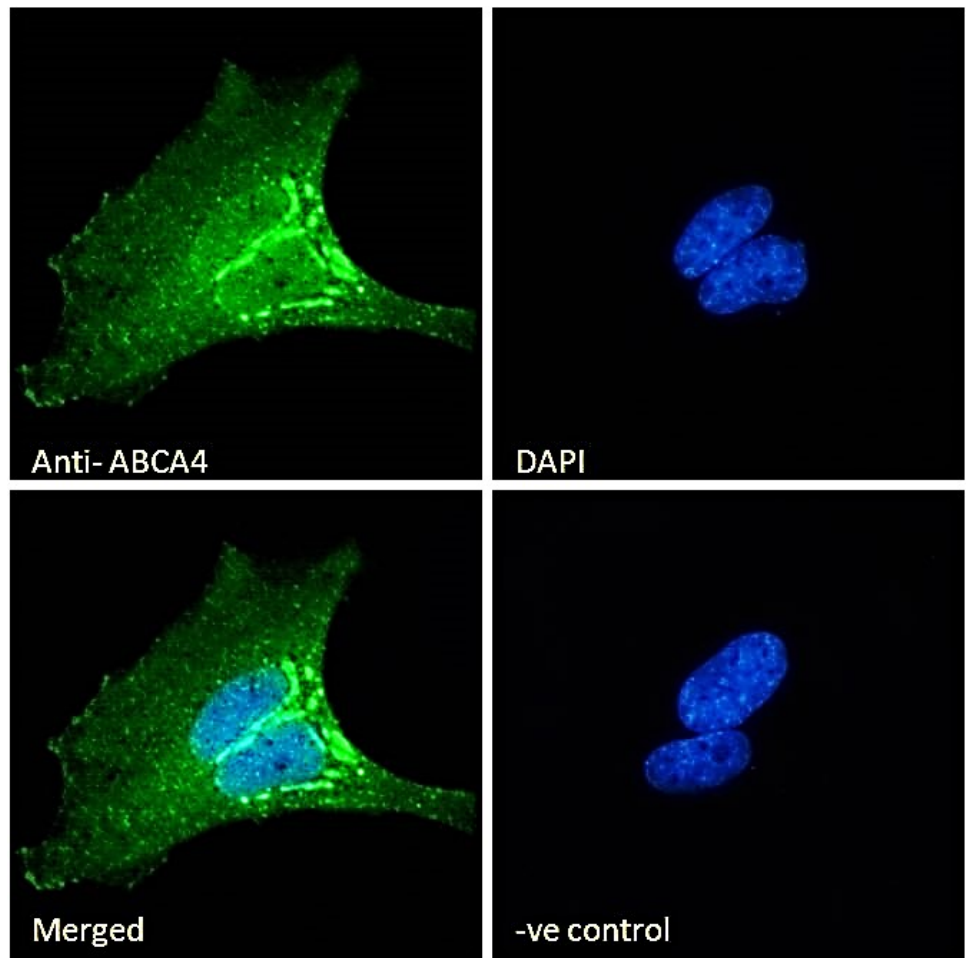
The F220C and F45L rhodopsin mutations identified in retinitis pigmentosa patients do not cause pathology in mice.

Sci Rep. 2020 May 5;10(1):7538.

PMID: 32371886



EB08615 Immunofluorescence analysis of paraformaldehyde fixed MCF7 cells, permeabilized with 0.15% Triton. Primary incubation 1hr (10ug/ml) followed by Alexa Fluor 488 secondary antibody (2ug/ml), showing endoplasmic reticulum staining. The nuclear stain is DAPI (blue). Negative control: Unimmunized goat IgG (10ug/ml) followed by Alexa Fluor 488 secondary antibody (2ug/ml).



EB08615 Immunofluorescence analysis of paraformaldehyde fixed HeLa cells, permeabilized with 0.15% Triton. Primary incubation 1hr (10ug/ml) followed by Alexa Fluor 488 secondary antibody (2ug/ml), showing endoplasmic reticulum staining. The nuclear stain is DAPI (blue). Negative control: Unimmunized goat IgG (10ug/ml) followed by Alexa Fluor 488 secondary antibody (2ug/ml).